



Voters Guide Primary Election May 18, 2021

**Published by
League of Women Voters of Greater Pittsburgh
Koppers Building
436 Seventh Avenue Suite 350
Pittsburgh, PA 15219
412-261-4284**

This guide lists all candidates in the May 18, 2021 municipal primary for the offices of Judges of the Supreme Court, Superior Court, Commonwealth Court and Judges of the Allegheny County Court of Common Pleas. Also listed are candidates for the Allegheny County Sheriff, Allegheny County Council. Also listed are candidates for the Mayor of the City of Pittsburgh and candidates for the Pittsburgh City Council as well as the candidates for the Pittsburgh Public Schools Board of Directors. The candidate names are listed as they will appear on the ballot. The party of the governor is, by practice, given the first position on the ballot in Pennsylvania.

**May 12-18, 2021
Publication of the Voters Guide was made possible by the
League of Women Voters of Pennsylvania-Citizen Education Fund**

**Reproduction of this guide is made possible by
the generous support of Laurel Foundation**

This Voters Guide was prepared by the League of Women Voters of Greater Pittsburgh and the League of Women Voters of Pennsylvania Citizen Education Fund. The League is a non-partisan organization and does not endorse or oppose any political party or candidate. Its purpose is to promote political responsibility through informed and active participation of citizens in government.

The Voters Guide listings are based entirely on material submitted by the candidates. In cases in which questionnaires were not returned, only the candidate's name and party are listed. Every candidate was asked to submit a photograph; those received are printed.

The guide lists all candidates in the May 18, 2021 municipal primary for Justices of the Pennsylvania Supreme Court, Judges of the Superior Court, Judges of the Commonwealth Court, and Judges of the Allegheny County Court of Common Pleas. Also listed are candidates for Allegheny County Sheriff, and Allegheny County Council candidates. Also listed are candidates for the offices of Mayor of the City of Pittsburgh, Pittsburgh City Council, and Pittsburgh School Board Directors. The candidate's names are listed as they will appear on the ballot. The party of the governor is, by practice, given the first position on the ballot in Pennsylvania.

All registered voters, regardless of whether or not they are enrolled members of a political party, are entitled to vote for the

League of Women Voters Guide to Municipal Primary Election

May 18, 2021 (Polls open from 7 AM to 8 PM)

Special Election Ballot questions.

Study the guide and choose the candidates for whom you want to vote. You may take the guide into the voting booth to help you. Nothing in this guide should be construed as an endorsement of any candidate by the League of Women Voters.

Voters who are not sure if they are registered to vote should call the county Department of Elections, 412-350-4510. To find out what district you live in call the League of Women Voters Community Information Center, 412-261-4284, Mon-Thurs 9-3pm.

Voting in a Primary Election

To vote in this primary election you must have been registered by May 3, 2021.

Your registration is permanent if

- You did not change your address.

- You did not change your name

Prisoners' Rights

You are eligible to vote if you are awaiting trial.

If you are a prisoner in Pennsylvania, you are eligible to vote if

- You are registered properly.

- You have obtained an absentee ballot.

- You were convicted of a misdemeanor

Identification Requirements for New Voters

If you are a new voter or if you are voting at a polling place for the first time then you must bring your voter ID card or a photo ID such as a driver's license, student ID or some other form of Federal or State government issued ID. Some forms of non-photo ID are also acceptable such as a firearm permit, current utility bill, bank statement, paycheck, or government check. If you do not have any acceptable ID then you must be allowed to vote by provisional ballot.

Provisional Ballots

If your right to vote is challenged at the polls on Election Day and the problem cannot be resolved at the polling place, the judge of elections at the polling place should telephone the County Board of Elections. The problem could be resolved by phone if your name appears on the county records. If it does not and you want to try to resolve the problem, then you can go in person to the County Board

of Elections where a judge from the Court of Common Pleas will be on duty to resolve election problems. Alternatively, you can ask for and vote by provisional ballot. If it is later determined that you were eligible to vote your ballot will be counted. You will be given instructions on how to determine if your vote was counted.

Mail-in Voting

Voters have the option to vote by mail without providing any reason or excuse. To apply online, go to votespa.com. Or contact the county election office to request a paper application.

Applications for a mail-in ballot must be received by the County Elections Division by May 11, 2021 at 4 pm. Completed mail-in ballots must be received by the Elections Division by May 18, 2021 at 8 pm election day to be counted.

Absentee Voting

Registered voters who are ill, disabled, or will be absent from the municipality on Election Day may vote by absentee ballot. Completed APPLICATIONS for absentee ballots must be received by the Allegheny County Elections Division by 5 P.M., Tuesday, May 11. Completed

absentee BALLOTS must be received back at the Elections Division by 5 P.M. on Tuesday, May 18. If an emergency arises (unexpected illness or business trip) after the Tuesday application deadline, call the Elections Division 412-350-4520 for information on emergency absentee voting. Proof of emergency may be required. An emergency application and ballot can be obtained and voted by 5 P.M. on Tuesday, May 18. Any disabled voter having questions regarding the accessibility of a polling place should consult the Elections Division at 412-350-4520.

Write-in Voting

For write in voting information, check with the workers at your polling place before entering the voting booth.

Election Day Problems

If your right to vote is challenged at the polls on Election Day and the problem cannot be resolved at the polling place, the judge of elections at the polling place may telephone the county Board of Elections. The problem could be resolved by phone if your name appears on the county records. If it does not and you want to try to resolve the problem, then you will have to go in person to the county Board of Elections where a judge from the Court of Common Pleas will be on duty to resolve election problems.

Internet Voters Guide

This Voters Guide and other useful information for voters can be found on the League's web site at <http://lwvpg.org> or can be found by going to www.vote411.org and typing in your address and zip code.

PENNSYLVANIA JUSTICE OF THE SUPREME COURT

Term: 10 years

Salary: \$215,037

Description of office: The Supreme Court of Pennsylvania is the highest court in the Commonwealth and the oldest appellate court in the nation. The Supreme Court's administrative powers and jurisdictional responsibilities are vested with the seven-member court by the Pennsylvania State Constitution and a collection of statutes known as the Judicial Code. The justice with the longest continuous service on the Supreme Court automatically becomes chief justice. Administratively, the courts within the Unified Judicial System are largely responsible for organizing their own staff and dockets; however, the Supreme Court has several committees and boards responsible for writing and enforcing rules for judges, attorneys, and litigants to ensure an efficient and fair judicial review. Annually, the seven justices receive over 3,000 requests for appellate review.

DEMOCRATIC

(Vote for One)
MARIA MCLAUGHLIN

Party: Dem

Biographical Info:

County: Philadelphia

Mailing Address: P.O. Box 15943 Philadelphia, PA 19103

Education: Penn State 1988. Delaware Law School at Widener University 1992

Qualifications: Current Judge on our PA Superior Court; Served 6 years as Judge, Court of Common Pleas; Chief and ADA, Phila District Attorneys Office; Rated Highly Recommended for the Supreme Court by the PBA

campaign website: <http://judgemclaughlin.com>

Facebook: <http://@Maria4PASC>

Twitter: <http://@McLaughlin4PASC>



MARIA MCLAUGHLIN

Questions:

Q: What can you do, both on and off the bench, to ensure that all individuals have equal access to justice?

A: Along with being our highest appellate court, The Supreme Court oversees our statewide court system and legal community. As such we have the opportunity to set rules, educate the legal community and create special court programs dealing with human services issues like substance abuse & mental health challenges, veteran's issues & initiatives focused on autism. All geared toward providing fair treatment and equal access for people with unique circumstances.

Q: What can you do, both on and off the bench, to ensure an equitable and fair court?

A: As a lawyer & a judge I have always worked to ensure everyone who comes into a courtroom has an opportunity to be heard and the law applied without bias. This is the cornerstone of our legal system. As a Justice I will not waiver from that driving principle. My work on the bench and in my life will always reflect my dedication to fairness and equality.

REPUBLICAN

(Vote for One)
PAULA PATRICK

Party: Rep

Biographical Info:

County: Philadelphia

Mailing Address: 481
City Hall PHILADELPHIA,
Pennsylvania 19151

Education: Bennett College
Greensboro, NC Texas
Southern University Thurgood
Marshall School of Law
Houston, TX

Qualifications: 18 years
Trial Judge experience; Legal
teaching experience; Frequent
presenter/lecturer on legal
topics; Highly Recommended by the Pa Bar Assoc.

campaign website: <http://VotePaulaPatrick.com>

Facebook: <http://@JudgePaulaPatrick>

Twitter: <http://@JudgePatrickPA>

Questions:

Q: What can you do, both on and off the bench, to ensure that all individuals have equal access to justice?

A: On the Bench—A judge should ensure that people have access to our courts and adequate legal representation. A judge should also be patient with pro se litigants during court proceedings. A judge must also ensure that any and all available resources provided within the court system by distributed to all people equally. Off the Bench—A judge should get involved in assisting with community, social, professional and/or religious groups to help assist with programs that provided equal access to justice.

Q: What can you do, both on and off the bench, to ensure an equitable and fair court?

A: On The Bench—I think the best thing that a judge can do to ensure a fair and equitable court is to follow the law. Our rule of law and our Constitutions are important because they are the foundation of our democracy. If a nation fails to honor its own laws, then we fail as a society. Off The Bench—A judge should be involved in community service and willing to educate people about their rights and responsibilities under the law when appropriate.



PAULA PATRICK

KEVIN BROBSON

Party: Rep

Biographical Info:

County: Dauphin

Mailing Address: P.O. Box
11683 Harrisburg, PA 17108

Education: Widener
Commonwealth Law School,
summa cum laude (2nd in
class), Managing Editor Law
Review; Lycoming College
(B.A., Accounting/Economics),
magna cum laude

Qualifications:

President Judge of the Pa.
Commonwealth Court; over 11 years as statewide
appellate court judge (elected 2009, retained
2019); Pa. Judicial Conduct Board, 2015-19
(Chair); 14 years' private practice; former federal
judicial clerk; "Highly Recommended" by Pa. Bar
Association

campaign website: <http://www.brobsonforpa.com>



KEVIN BROBSON

Facebook: <http://www.facebook.com/Kevin-Brobson-for-PA-112608997531221>

Questions:

Q: What can you do, both on and off the bench, to ensure that all individuals have equal access to justice?

A: I would work cooperatively with the governor and the legislature to increase funding for legal aid programs. While in private practice, I created a program in Dauphin County to expand pro bono opportunities for lawyers to provide services to nonprofit organizations. I would encourage county bar associations to think creatively about expanding pro bono service to small and minority-owned businesses and nonprofits. I want to ensure our courts have access to interpreters for parties with limited English proficiency. I would build upon the excellent work of Philadelphia Legal Assistance with respect to the representation of low-wage workers and the unemployed by engaging law schools and other legal aid associations throughout the state.

Q: What can you do, both on and off the bench, to ensure an equitable and fair court?

A: I believe I have earned a reputation as a fair and impartial arbiter of the law. I treat everyone who enters my courtroom, or has a matter before me, with equal respect and dignity. I strive to appreciate the perspectives and points of view of all parties. It is important to me that every litigant, represented and unrepresented, be given every opportunity, within the rules and the law, to present their case. Moreover, as a former Chair of the Pa. Judicial Conduct Board, I am keenly aware of how important it is to Pennsylvanians that our judges observe the highest ethical standards on and off the bench. I hold myself to this high standard. All Pennsylvanians deserve to have faith in a fair and impartial judiciary.

PATRICIA A. MCCULLOUGH

Party: Rep

Biographical Info:

County: Allegheny

Mailing Address: P.O.
Box 12971 Upper St Clair,
Pittsburgh, PA 15241

Education: University of
Pittsburgh -BA University of
Pittsburgh School of Law- JD

Qualifications: Currently
Judge- PA Commonwealth
Court over 11 yrs. where I rule
on issues that are brought
before PA Supreme Court;
trial judge, Allegheny County
Ct. of Common Pleas; Asst.General Counsel, Univ.
of Pgh.;private practice attorney; Director Cath.
Char; chair,Allegheny Cty.Bd.Prop.Appeals;Chair
ACPRC.

campaign website: <http://Patriciaforjustice.com>

Questions:

Q: What can you do, both on and off the bench, to ensure that all individuals have equal access to justice?

A: As judge and in career, I work with programs that promote restorative and equal justice. The foundational precepts of One Nation under God,"... with liberty and justice for all" must be ensured. I have volunteered: as instructor/faith-based jail program which reduces recidivism to 8-12%; with at-risk youth programs; to help implement residential drug addiction center; to help implement free legal speaker series for those released from incarceration;



PATRICIA A.
MCCULLOUGH

Chr./App. Ct Proc. Rules Committee/ system more user friendly; cmte.law students to represent pro se parties in UC; educate public to process; cmte./ Human trafficking diversion ct. I will fight for openness of all courts for those in need or wronged by the justice system. Art.I,sec.11 Pa,Const.

Q: What can you do, both on and off the bench, to ensure an equitable and fair court?

A: I abide by oath to be fair and impartial and uphold rule of law and Constitutions of PA and USA. To ensure impartiality I did not take money donations from attys. or pacs when I ran for judge of Commonwealth Ct. of PA and I am not taking them for Supreme Ct of PA. I did not take controversial 2005 pay raise and for first 10 yr term on Cmwlt. Ct. gave mthly checks to state treasurer due to pay raise totaling over \$10,000.00 dollars of after tax money returned to treasurer. Sentencing practices must be fair and transparent, not disproportionate; vltims treated with dignity; implement faith-based programs that holistically address underlying issues (e.g. addiction,abuse,anger). I will uphold justice and oppose partisanship or abuse in system

PENNSYLVANIA JUDGE OF THE SUPERIOR COURT

Term: 10 years

Salary: \$202,898

Description of office: The Superior Court is one of Pennsylvania's two statewide intermediate appellate courts. This court, established in 1895, reviews most of the civil and criminal cases that are appealed from the Courts of Common Pleas in the Commonwealth's 67 counties. The Superior Court consists of 15 judges. The president judge is elected to a five-year term by his/her colleagues. A large number of appeals flow to the Superior Court from the trial courts. Generally, appeals are heard by panels of three judges sitting in Philadelphia, Harrisburg, or Pittsburgh. The court often is the final arbiter of legal disputes. Although the Supreme Court may grant a petition for review of a Superior Court decision, most petitions are denied, and the ruling of the Superior Court stands.

DEMOCRATIC

(Vote for One)
JILL BECK

Party: Dem

Biographical Info:

County: Allegheny

Mailing Address: PO Box
81583 Pittsburgh, PA 15217

Education: I graduated
cum laude from The George
Washington University
with my bachelors degree in
criminal justice and a minor in
psychology. I then graduated
cum laude from Duquesne
University School of Law,
where I was an editor of the
Law Review and a member of the Moot Court Board.

Qualifications: Spent 10 years in the Superior & Supreme Court chambers of Christine Donohue, where I drafted over 500 decisions; represented clients in every area of the law that the Superior Court hears and in that Court itself; highly recommended by the ACBA and recommended by



JILL BECK

the PBA for the Superior Court.

campaign website: <http://www.JillBeck.com>

Facebook: <http://www.Facebook.com/electjillbeck>

Twitter: <http://www.Twitter.com/electjillbeck>

Questions:

Q: What can you do, both on and off the bench, to ensure that all individuals have equal access to justice?

A: On the bench, a Superior Court Judge must provide a full, fair, & thorough review of every case that comes before her. The role requires a careful balancing of error correction through the appropriate lens & deference to the court below, without serving as a rubberstamp for any interest. A judge must also be decisive and efficient—litigants should not be required to wait years for a decision on whether they will be free from incarceration, able to continue in their livelihood, or able to obtain custody of their children. Off the bench, a judge can educate the public about Pennsylvania's judicial system, their rights and responsibilities when coming before the courts, & the courts' reciprocal responsibilities to the public.

Q: What can you do, both on and off the bench, to ensure an equitable and fair court?

A: When providing a full & thorough review of every case, the judge must treat all litigants fairly & equally, regardless of the parties' race, religion, ethnicity, gender, gender identity, sexual preference, disability, or wealth. All persons are entitled to a fair consideration of their case, no matter who they are or what they are alleged to have done, & the writing deciding the appeal should reflect this. A judge should not be impatient or impertinent in her written decision, as this is indicative of a failure to treat those involved & the issues raised with the dignity and respect they deserve. All judges should also participate in implicit bias training to learn what it is, the role it plays in decision making, & tools to combat it.

TIMIKA LANE

Party: Dem

Biographical Info:

County: Philadelphia

Mailing Address: 647 W Union st Whitehall, PA 18052

Education: West Catholic High School and went on to graduate Howard University in Washington DC & received my Law Degree in 2002 from Rutgers University School of Law in NJ.

Qualifications: Major Trials Judge presiding over 1000's of trials, authoring 100's of opinions. I handle all human trafficking cases & many of the most serious criminal cases & Grand Jury matters. Certified Child Advocate & as former Exec Dir of the Senate Govt Cmte advised on the constitutionality of legislation

campaign website: <http://www.judgelane.com>

Facebook: <http://@LaneforSuperiorCourt>

Twitter: <http://@JudgeTimikaLane>

Questions:

Q: What can you do, both on and off the bench, to ensure that all individuals have equal access to justice?

A: As a sitting Judge, I ensure everyone in my courtroom is treated with dignity and respect regardless of race, gender, creed, religion, sexual orientation or socioeconomic status. As a member of the Access to Justice Committee, we address this issue by looking at possible barriers and how to remove those barriers to ensure everyone has equal access. As co-chair of



TIMIKA LANE

the Local Criminal Rules Committee we recommend the qualifications for court appointed attorneys to make sure that indigent people have capable legal representation. We ensure that the local criminal rules are fair and applied equally to all who all who come before our courts.

Q: What can you do, both on and off the bench, to ensure an equitable and fair court?

A: The Superior Court is an error correcting court & often the last line of defense for the parties involved in a case. When reviewing an appeal It is vital the appellate judge have strong courtroom experience on both sides of the bench to best determine the if the proceedings in the lower court were fair, all parties were heard and the law has been applied fairly regardless of race, creed, ethnicity, gender, sexual orientation or economic status. I will ensure equity and fairness in all cases before me, just as I do for all who appear in my current courtroom. Off the bench, I believe judges should be visible in the community. We are public servants and it is our duty to make sure the public understands how the court system functions.

BRYAN NEFT

Party: Dem

Biographical Info:

County: Allegheny

Mailing Address: PO Box 13104 Pittsburgh, PA 15243

Education: Boston University School of Law J.D., May 1989 Note, Debt-Equity Exchange Programs in Developing Nations. University Of Pennsylvania B.A., May 1986 Major: Political Science Shady Side Academy H.S., June 1982

Qualifications: Bryan has spent more than 30 years litigating and trying cases, and counseling clients throughout Pennsylvania. Bryan also served for nearly 15 years in leadership roles with the Allegheny County Bar Association and Supreme court IOLTA board.

campaign website: <http://bryanneft.com>

Facebook: <http://facebook.com/bryanneft>

Twitter: <http://twitter.com/bryanneft>

Questions:

Q: What can you do, both on and off the bench, to ensure that all individuals have equal access to justice?

A: Access to Justice, to me, means ensuring that everyone who needs to utilize the courts has the ability to do so through legal services and other means designed to help them pursue claims or defenses. My leadership and hard work in the Allegheny County Bar Association and Allegheny County Bar Foundation led The Pennsylvania Supreme Court to appoint me to The Pennsylvania IOLTA Board, its charitable arm that oversees state funding of legal services to those who cannot afford them. I was appointed chair of the board in 2014-15. In that role, we stretched every dollar to maximize the number of people who received free legal services because they could not afford them.

Q: What can you do, both on and off the bench, to ensure an equitable and fair court?

A: As a leader in the Bar Association I have championed changes to the rules to prohibit judicial officers from engaging in bias and discrimination. The rules must be reviewed continuously to accommodate changing norms and existing loopholes. Rules governing equity and fairness, however, are ineffective if the judiciary is not educated or educated sufficiently on what those rules mean and how they should be implemented. I am a strong proponent of continuing education programs, particularly on bias, implicit bias and discrimination to ensure that courts are



BRYAN NEFT

fair for all. I have and will continue to serve on the ACBA Gender Bias subcommittee. I, as a judge would be just as accessible to the practitioners and bar associations across the state.

REPUBLICAN

(Vote for One)

MEGAN SULLIVAN

Party: Rep

Biographical Info:

County: Chester

Mailing Address: PO Box 3425 West Chester, PA 19380

Education: Temple University Beasley School of Law, Juris Doctorate (cum laude) Saint Joseph's University (B.A.)

Qualifications: 20 years criminal & civil law experience. Deputy Attorney General in PA Attorney General's Office & Supervisory District Attorney, protected victims including the most vulnerable members of our society as a child abuse prosecutor. Asst. General Counsel at West Chester University and civil litigator.

campaign website: <http://www.megsullivanforjudge.com>

Facebook: <http://@megforjudge>

Questions:

Q: What can you do, both on and off the bench, to ensure that all individuals have equal access to justice?

A: I believe equal access to justice is essential to maintaining trust in our courts and our justice system's legitimacy. I am committed to providing all individuals in my courtroom with equal access to justice by ensuring their voice is heard, their rights are protected, & that they are never subject to discrimination. I support efforts to enhance equal access to justice through legal aid programs that provide individuals with access to qualified attorneys. Providing interpreters for those individuals for whom English is a second language is also important. It is also important to give Individuals with disabilities full access to the courtroom. Everyone that comes before a judge should fully understand their constitutional rights.

Q: What can you do, both on and off the bench, to ensure an equitable and fair court?

A: I have a deep respect for our Constitution and our system of justice. I have spent a large part of my 20-year career as an attorney helping others to navigate both the criminal and civil judicial system. I respect the system but understand why some fear it. Individuals who serve in the role of a judge must recognize that they are the arbiter of the rules and the process. This is a great power that requires objectivity, an innate sense of fairness, and humility. I possess these traits and am committed to delivering to all citizens a justice system that shows respect and fairness, as well as knowledgeable decision-making that takes into account the parties' perspectives and applies the law objectively.

PENNSYLVANIA JUSTICE OF THE COMMONWEALTH COURT

Term: 10 years

Salary: \$202,898

Description of office: The Commonwealth Court is one of Pennsylvania's two statewide intermediate appellate courts. This court, established in 1968,



MEGAN SULLIVAN

unlike any other state court in the nation. Its jurisdiction generally is limited to legal matters involving state and local government and regulatory agencies. Litigation typically focuses on subjects such as banking, insurance, utility regulation, and laws affecting taxation, land use, elections, labor practices, and workers compensation. The Commonwealth Court also acts as a court of original jurisdiction, or a trial court, when lawsuits are filed by or against the Commonwealth. The Commonwealth Court is made up of nine judges. The president judge is elected to a five-year term by his/her colleagues. Generally, appeals are heard by panels of three judges sitting in Philadelphia, Harrisburg, or Pittsburgh.

DEMOCRATIC

(Vote for not more than TWO)
DAVID LEE SPURGEON

Party: Dem
Biographical Info:
County: Allegheny

Education: McKeesport Area Senior High Duquesne University - B.A. Duquesne University School of Law - Juris Doctor

Qualifications: "Highly Recommended" by the Pennsylvania Bar Association; Endorsed by the PA Dem; Serving as a Judge since 2016; Appointed by the Governor and unanimously confirmed by the PA Senate; Adjunct Law Professor; National Judicial Fellow; Domestic Violence National Expert; former prosecutor family violence

campaign website: <http://www.judgespurgeon4commonwealth.com>

Facebook: <http://@judgespurgeon4commonwealthcourt>

Twitter: <http://@davidspurgeon4J>

Questions:

Q: What can you do, both on and off the bench, to ensure that all individuals have equal access to justice?

A: As a judge, I use my position to promote systems change that ensure that all people have more accessibility to the courts. As a Judicial Fellow, I am using those resources to study the statistics over the year of the pandemic to understand whether the use of advanced technology communications increased participation in the court process. Often times, people with limited resources face additional obstacles inherent with our established court processes. Further, we can ensure that everyone in our community has equal access to the court regardless of how you look, who you love, the language you speak and your socio-economic status. Off the bench, judges should participate in the community as a stakeholder to promote the above matters.

Q: What can you do, both on and off the bench, to ensure an equitable and fair court?

A: Judges must continue to be active members of the community. In order to understand how the court is perceived, one must be accessible and engage in intentional dialogue to understand all the people that we serve. Judges must continue to be trained in explicit and implicit bias as it relates to all aspect of the existing court system, and be open to discussing and participating in the changes identified to make the courts more equitable and fair. I recently participated in a national panel to address the racial disparities that exist in the child welfare system. On the bench, we must continue to serve as a servant leader and hold ourselves as well as our colleagues accountable for inequities.



DAVID LEE SPURGEON

LORI A. DUMAS

Party: Dem

Biographical Info:

County: Philadelphia

Mailing Address: 1234 Market Street Box 40606 Philadelphia, PA 19107

Education: North Carolina Central School of Law; Duke University; Executive Certificates from Cornell University, (D&I); University of Pennsylvania, Fels Institute of Government

Qualifications: Trial Court

Judge since 2002; Jury and Non-jury experience; Presided in Family, Criminal and Civil Divisions; Former Corporate Executive, Non-Profit Leader; Adjunct Professor; National Leader in trauma informed courts; Led the creation of victim centered juvenile human trafficking court in Phila.

campaign website: <http://www.judgedumas2021.com/>

Facebook: <http://www.facebook.com/Judgedumas2021/>

Twitter: <http://Twitter.com/JudgeDumas>

Questions:

Q: What can you do, both on and off the bench, to ensure that all individuals have equal access to justice?

A: As a judge, I must ensure that every person that comes before the Court has the opportunity to be heard. I must rule according to the law without losing sight of the ultimate goal of dispensing justice. I must remove any obstacle which prevents equal access to justice by any means necessary. As a citizen, I can involve myself with organizations and in activities which seek to educate people about the Court, its processes and procedures and to equip them with the knowledge and power to be able to use the legal system as an advocate for themselves and their interests.

Q: What can you do, both on and off the bench, to ensure an equitable and fair court?

A: Judges set the tone in their courtrooms. They must model fairness, civility, patience and impartiality and demand it from those in their presence. In my courtroom, every voice will be heard and my decisions will be rooted in the law and cloaked in compassion and the urgency to do what is right. I must conduct a daily heart check to ensure that I am not bringing any biases with me that may interfere with my ability to render impartial decisions. I must call out injustice when it occurs...every time. In the community, I can educate others about their rights and the status of the law. I should regularly attend implicit bias trainings and require my staff to do the same, to ensure that fairness is not just a mantra but embedded in my core.

SIERRA STREET

Party: Dem

Biographical Info:

County: Philadelphia

Mailing Address: 3241 W. Queen Lane Philadelphia, PA 19129

Education: Howard University B.A., 1995 Temple University Beasley School of Law J.D., 1999

Qualifications: Civil Division Complex Litigation Center Criminal Division Major Jury Trial Program Former Lead Supervising Judge, Philadelphia Indicting Grand Jury Program Former



LORI A. DUMAS



SIERRA STREET

Staff Attorney, Defender Association of Philadelphia Former Chief Counsel, Friends Rehabilitation Program
campaign website: <http://www.judgesierrastreet.com>
Facebook: <http://Judge Street for Commonwealth Court>

Questions:

Q: What can you do, both on and off the bench, to ensure that all individuals have equal access to justice?

A: The greatest obstacle to justice is access to adequate representation for the indigent population and moderate to low income families. In my previous roles as an Assistant Public Defender, Family Court Hearing Officer and Chief Counsel at a nonprofit organization, I witnessed firsthand the lack of access to justice for many individuals and did my best to help fill in the gaps. As a judge, I can now make sure all parties have competent counsel/representation regardless of socio-economic status before proceeding in any matter that comes before me. Defendants should be able to participate in their own defense and pro se litigants should be provided proper guidance as they navigate the legal system.

Q: What can you do, both on and off the bench, to ensure an equitable and fair court?

A: Additionally, I can make sure that everyone is treated fairly in court regardless of race, gender, orientation, etc. I am certainly sensitive to and keenly aware of unique issues faced by marginalized populations. As stewards of justice, judges should adhere to and apply the strictest rule of law while also championing inclusion and diversity. This will only strengthen our institutions.

AMANDA GREEN HAWKINS

Party: Dem

Biographical Info:

County: Allegheny County

Mailing Address: P.O. Box 4766 Pittsburgh, PA 15206

Education: Duke University, BA Northeastern University Law School, J.D.

Qualifications: 20 years of legal experience. I was elected and served two terms on Allegheny County Council.

campaign website: <http://www.amandagreenhawkins.com>

Facebook: <http://Facebook.com/voteamandagreenhawkins/>

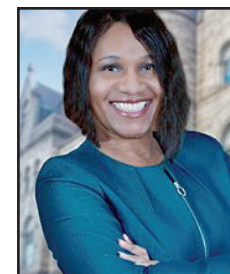
Questions:

Q: What can you do, both on and off the bench, to ensure that all individuals have equal access to justice?

A: I am running for Commonwealth Court because I know the importance of checks and balances, and judicial integrity. I have the compassion and the experience to join the court providing a dedicated work ethic and clear comprehension of judicial process. "There should never be an attitude of 'less important' cases, each case deserves a complete meritorious review." I am one of 2000 nationally recognized labor attorneys. My career is not based on being a "rainmaker" for profits, but to guarantee worker's safety and dignity. When individuals enter a courtroom they should feel confident the judges reflect their values and believe they have been heard. As a civil and Human Rights manager, this is what I do every day.

Q: What can you do, both on and off the bench, to ensure an equitable and fair court?

A: You must immerse yourself in service to your community. In 2020, I was selected by Mayor Peduto to serve on the Pittsburgh Community Task Force for



AMANDA GREEN HAWKINS

Police Reform. I served on the Board of the Women's Law Project, and Pittsburgh United. When elected to Allegheny County Council, I was Chair of the Committee on Economic Development and Housing, I also served on the Budget and Finance Committee, and Committee on Government Reform. I understand the value of volunteer time. My experiences have prepared me to be fair and impartial. Everyday at work I fight for human rights and civil rights. Judges have an obligation to their community to be a humble and thoughtful judge. Equal justice for all requires an understanding of all citizens.

REPUBLICAN

(Vote for not more than TWO)
DREW CROMPTON

Party: Rep

Biographical Info:

County: Cumberland

Mailing Address: PO Box 24
Harrisburg, Pa 17108

Education: Phil-mont
Christian Academy Dickinson
College Widener School of Law

Qualifications: Currently
a sitting Judge on the
Commonwealth Court. I have
authored over 100 opinions.
They are balanced, well-
reasoned and thoughtful. I am
recommended by the Pa. Bar.

I also serve on the Supreme Court Appellate Rules
Committee. I have extensive Constitutional, statutory
and regulatory experience.

campaign website: <http://JudgeCrompton.com>

Questions:

**Q: What can you do, both on and off the bench,
to ensure that all individuals have equal access
to justice?**

A: As a sitting Judge I have done all in my power to
treat every person that comes before me with respect
and fairness. Judges must ensure those with modest
means have equal access to justice. We are all created
equal but as judges we must insist that all are treated
equally or justice is being unfairly denied. Filing fees
and other court costs must be waived for those who
cannot afford them. Also, quality lawyers must be
available to low income individuals free of cost for
civil and criminal matters. Further as judges we must
ensure that no one perceives that race or wealth or
political connections are weighed when a decision is
rendered. High ethical standards are vital to instill
confidence in the Judiciary.

**Q: What can you do, both on and off the bench,
to ensure an equitable and fair court?**

A: Litigants must be convinced that the Judge's
personal philosophy does not impede justice. I have
also defended the powers of each branch of government
since citizens want to be assured that the legislative,
executive and judicial branches are not overstepping
their constitutional boundaries. Further I try to be a
judge that has common sense and treats every person
with common decency. Judges must also remain
connected to their communities and not be overly
isolated. People have more confidence in the Judiciary
when they know Judges care about our the same things
in our Commonwealth as they do. Judges must have
a heightened sense of their words and actions in the
courtroom. Both must be beyond reproach.

STACY MARIE WALLACE

Party: Rep

Biographical Info:

County: McKean



DREW CROMPTON

Mailing Address: 5 Vista
Circle Bradford, PA 16701

Education: B.A.
Communications, University of
Pittsburgh-Bradford ('01) J.D.,
Duquesne University School of
Law ('04)

Qualifications: More than
16 years experience & Owner
of Stacy Wallace Law, LLC
Specially Appointed Family
Law Master & SORNA Counsel
Adjunct Professor, University
of Pittsburgh-Bradford
Clerkships at McKean County
Court & PA Superior Court Certified Mediator-Conflict
Resolution McKean County Bar Assoc., President
campaign website: <http://stacyforpa.com>

Facebook: <http://www.facebook.com/StacyforPA/>

Questions:

**Q: What can you do, both on and off the bench,
to ensure that all individuals have equal access
to justice?**

A: Throughout my career, my purpose has been to
always seek justice. I was first inspired to enter the legal
field by a pamphlet for Northwestern Legal Services,
a legal aid organization of which I now serve on the
board of directors. I've worked tirelessly to ensure that
our state's most vulnerable individuals, including at-
risk children and those with disabilities, have equal
access to justice, and have done much of this work
pro bono. If elected, I will continue to advocate for and
engage with underserved communities. On the bench,
I will be a steadfast defender of equal justice under
the law in all matters and safeguard the rights of all
citizens regardless of gender, race, sexual orientation,
religious affiliation, or financial status.

**Q: What can you do, both on and off the bench, to
ensure an equitable and fair court?**

A: The makeup of the Commonwealth Court should
be a true reflection of Pennsylvania and the broad
perspectives and values of our residents. I will use
my grassroots upbringing from McKean County,
diverse experience, and values to guide informed
and thoughtful opinions that produce more equitable
outcomes. Off the bench, I will continue to engage
our citizens, restore their trust in our courts, and
raise awareness of our judiciary's role and its moral
and ethical foundations. Equitable courts start with
having judges who value equality, fairness and a desire
to serve others. As just one example of how I've done
that in my personal life, I co-founded "Blessing Boxes
of Bradford" which serves as small sidewalk food banks
throughout McKean County.

JUDGE OF THE COURT OF COMMON PLEAS

(Vote for not more than NINE)

Term: 10 years

Salary: \$186,665

Duties: The Court of Common Pleas is primarily a
trial court. There are four divisions of the Court of
Common Pleas: Civil, Criminal, Orphans, and Family.
The judges can be assigned from one division to another
as needed. Judges can run on both the Republican and
Democratic tickets.

**Because candidates may cross file, they are listed
alphabetically.**

BRUCE BEEMER

Party: Dem, Rep

Biographical Info:



**STACY MARIE
WALLACE**

Last Name: Beemer

First Name: Bruce

Middle Name: R

Mailing Address: 4 Commons
Drive

Campaign Phone: 412-855-
8782

Campaign Email: info@
KeepJudgeBeemer.com

Campaign Web Site: [http://
www.KeepJudgeBeemer.com](http://www.KeepJudgeBeemer.com)

Facebook: [www.facebook.com/
JudgeBeemer](http://www.facebook.com/JudgeBeemer)

District: 5th Judicial District
(Allegheny County)

Education: College of William and Mary (1987-1989),
transferred University of Scranton (1989-1992), BA
History, Summa Cum Laude University of Pittsburgh
School of Law (1992-1995)

Qualifications for office: Sitting Allegheny Common
Pleas Court Judge (appointed by Gov. Tom Wolf in Dec.
2019), 49th Attorney General of Pennsylvania, Inspector
General of Pennsylvania, Office of Attorney General
(First Deputy Attorney General, Senior Counsel, Chief
of Criminal Prosecutions, Chief of Staff)

**Q: Describe your legal experience in the Civil,
Criminal, Family and Orphans Division and why
this experience qualifies you to be a judge?**

A: I serve in the Criminal Division and am one of only
2 judges managing the Sex Offender Court Docket,
handling allegations of crimes committed against
children. I served for 14 years in the Allegheny DA's
Office as an ADA and then as a Deputy DA in charge
of multiple units within the office. I tried to verdict
approximately 125 jury trials. After leaving the DA's
Office, I joined my father as a partner at his and my
late-mother's firm focusing on criminal defense and
environmental cases. I've had cases in the criminal,
juvenile, and civil divisions. In those prior roles and now
as a judge, I see the people in each case and strive to be
fair and impartial. All of these experiences qualify me to
continue to handle a docket as a judge.

**Q: Describe an important personal trait that
would make you an effective judge in the Court of
Common Pleas.**

A: Throughout my career, I have been the person
people have turned to when governmental bodies have
been in need of reform. In the wake of the Kathleen
Kane scandal, I was appointed by the Governor and
unanimously confirmed by the PA Senate as the 49th
Attorney General of Pennsylvania. During my tenure, I
helped to restore morale within the Office and repaired
the broken relationships with other agencies. I then
served as the Inspector General of Pennsylvania, where I
investigated waste, fraud, corruption, and abuse in state
government agencies. Since becoming the first new judge
in decades to be sent directly to the Criminal Division, I
have worked tirelessly to mitigate the inequalities and
inefficiencies in our judicial and penal system.

Q: Who is your judicial role model and why?

A: While I greatly admire certain Supreme Court
Justices (Ruth Bader Ginsburg and Thurgood Marshall
come immediately to mind), it has been both my personal
interactions with and observations of Allegheny County
President Judge Kim Berkeley Clark that make her
my role model. She was my supervisor at the District
Attorney's Office for several years. Judge Clark
exemplified empathy and compassion as a prosecutor,
traits that are absolutely essential to being a fair
and impartial judge. Judge Clark leads by quiet and
distinguished example and displays a level of humility
and respect for others we all need to show in the judiciary.
She is prepared, punctual, and courteous to all who are
before her. She is a superb role model for any judge.



BRUCE BEEMER

DEAN A. BIRDY**Party:** Dem**Biographical Info:****Last Name:** Birdy**First Name:** Dean**Middle Name:** A.**Mailing Address:** 1241 Page Street**Campaign Phone:** 412-463-7192**Campaign Email:**

deanbirdyforjudge@gmail.com

Campaign Web Site: http://deanbirdy.com**Facebook:** https://www.

facebook.com/Dean-Birdy-for-Judge-106386594921686

District: Allegheny County**Education:** Thiel College, Business University of Pittsburgh, Law**Qualifications for office:** 33 years as civil and criminal trial attorney**Q: Describe your legal experience in the Civil, Criminal, Family and Orphans Division and why this experience qualifies you to be a judge?**

A: I have worked on small litigation, real estate, assessment appeals, civil and criminal cases, and I have occasionally heard cases as a member of the Allegheny County Court of Common Pleas Arbitration Panel. As far back as 33 years, I represented undergraduates at the University of Pittsburgh while in law school and then began working cases for all sections of the community including people with economic challenges which continues to this day. I volunteer through the pro bono program Neighborhood Legal Services to assist people with unemployment compensation and landlord/tenant disputes. I believe my experience having lived and worked in both the city and the suburbs allows me to relate to all members of the county.

Q: Describe an important personal trait that would make you an effective judge in the Court of Common Pleas.

A: I will attempt to judge others as I would ask to be judged: with respect, patience, and empathy. In my 33 years experience, the judges that are the best at resolving conflicts have listened patiently and respectfully to the parties. Those are the examples and principles that I will apply to this position the same way that I have applied them in my private practice.

Q: Who is your judicial role model and why?

A: There have been many judges from the magisterial level to the common wealth court that I have been in front of who demonstrate the qualities that I have listed.

**DEAN A. BIRDY**

25 years and in all divisions of the Court Served as an intern on the U.S. Third Circuit Court of Appeals Extensive experience in the Family Division, where new judges are typically placed Teaches other attorneys Family and Estate Law through Continuing Legal Education

Q: Describe your legal experience in the Civil, Criminal, Family and Orphans Division and why this experience qualifies you to be a judge?

A: I have practiced in all four divisions of the Court of Common Pleas. In the Civil Division I have been involved in jury and nonjury trials pertaining to auto accidents, product liability, and contract disputes. In Criminal Division, I represented criminal defendants in jury trials, preliminary hearings, and plea-bargains. In Orphans' Court, my practice includes primarily adoptions and decedent's estates but I also have experience with the estates of incompetents and minors. I have extensive experience in Family Division, having practiced in both the Adult Section and the Juvenile Section. In summary, I have a deep breadth of experience in all divisions, with a specific focus on family law, which is where Common Pleas judges are placed.

Q: Describe an important personal trait that would make you an effective judge in the Court of Common Pleas.

A: In addition to my legal experience, my current role as the Mayor of Penn Hills and my experience raising 5 children gave me extensive, and often unwelcomed, experience in conflict resolution considering all sides of a dispute, getting results that range from pouting to big hugs. Penn Hills is the largest and most diverse municipality in the county, outside of the City of Pittsburgh. Every day I see how some of my neighbors are treated differently in the justice system than those from wealthier, less diverse areas. I understand how the justice system affects people differently, an understanding that will ensure I deliver equal justice to every citizen, regardless of race or gender.

Q: Who is your judicial role model and why?

A: Although I have had the honor and privilege to practice before so many exceptional judges in Allegheny County, and the surrounding counties of Armstrong, Beaver, Butler, Fayette, Washington and Westmoreland County, my judicial role model is the Honorable Kim Eaton, Administrative Judge of the Allegheny County Family Division. She is highly intelligent, yet down to earth. She is firm but has patience, compassion and the proper judicial temperament. She has the perfect mix of knowledge of the law and common sense. She is courteous and fair-minded. When litigants walk into her courtroom, they know that they will have a full and fair opportunity to be heard. My goal is to be a judge like Judge Eaton.

TOM CAULFIELD**Party:** Dem, Rep**Biographical Info:****Last Name:** Caulfield**First Name:** Thomas**Middle Name:** Patrick**Mailing Address:** Friends of Judge Caulfield P.O. Box 314 Braddock, PA 15104**Campaign Phone:** 412. 708. 0557**Campaign Email:**

JudgeCaulfield2021@gmail.com

Campaign Web Site: http://www.JudgeCaulfield2021.com**Facebook:** Tom Caulfield for Court of Common Pleas Judge**Twitter:** @Caulfield2021**Education:** I graduated summa cum laude from the**TOM CAULFIELD**

University of Pittsburgh in 1988. I received a Bachelor of Arts degree in Philosophy. I attended the University Honors College and was a University Scholar. I graduated from the University of Pittsburgh School of Law in 1991 when I receive my Juris Doctor.

Qualifications for office: I am Highly Recommended by the Allegheny County Bar Association. I have been a Magisterial District Judge since 2010 and have heard over 26,000 cases in every area of the law. From 1992 until 2010 I was an attorney with the Office of the Public Defender, and also had a solo practice for 12 years.

Q: Describe your legal experience in the Civil, Criminal, Family and Orphans Division and why this experience qualifies you to be a judge?

A: As an attorney with the Office of the Public Defender, my practice was concentrated in the Criminal Division. I represented clients in preliminary hearings, at trials by jury as well as before Judges, in post trial motions, as well as probation and parole matters. I had many occasions to appear in Family Division to argue PFA issues, and in Orphans Court to represent people fighting mental health commitments. From 1991 to 2004, I had a solo practice that was much more diverse. While still practicing criminal law, I also represented plaintiffs and defendants in civil cases, landlord and tenant actions, divorce and custody cases, and clients in juvenile court cases. My practice took me to most of the counties in southwest Pennsylvania.

Q: Describe an important personal trait that would make you an effective judge in the Court of Common Pleas.

A: I try to treat everyone I interact with respectfully. All parties to the cases I hear, all attorneys who appear before me, and all witnesses who may testify in my courtroom deserve to be treated as I would like to be treated myself. In my years as an attorney, but especially my time as a Public Defender, I saw many Judges mistreat and demean people in their courtrooms. This was especially true for my indigent clients. No matter who is before me, no matter the type of case, and no matter the outcome, everyone must be treated with the respect and dignity they deserve. Failure to do so damages the integrity of the court and weakens its authority and reputation. As a Magisterial District Judge, this is one of the ethical canons I live by.

Q: Who is your judicial role model and why?

A: I do not have a single role model. In my 19 years of representing clients prior to taking the bench in 2010, I appeared before dozens of Common Pleas Court Judges and Magisterial District Judges in nine different counties. I tried to take away something from every one of these court appearances. Sometimes it was a positive thing that particular Judge did, and sometimes it was a negative thing. I realized that each Judge brings his or her own strengths and weaknesses with them, and after my appointment I was determined to take the best of all of them and work to try to avoid their shortcomings. Rather than simply try to be the next "Judge So and So", I have always tried to be the best Judge Caulfield I can be. It is a work in progress.

WILLIAM BILL CAYE**Party:** Dem, Rep**Biographical Info:****Last Name:** Caye**First Name:** William**Mailing Address:** 109 Crab Orchard Court**Campaign Phone:** 412.953.7022**Campaign Email:**

williamcaye@williamcayelaw.com

**WILLIAM BILL CAYE****PAULINE CALABRESE****Party:** Dem, Rep**Biographical Info:****Last Name:** Calabrese**First Name:** Pauline**Mailing Address:** 142 Crescent Hills Rd**Campaign Phone:** 412-715-1411**Campaign Email:** contact@

calabrese4commonpleas.com

Campaign Web Site: http://calabrese4commonpleas.com**Facebook:** Calabrese 4 Common Pleas**Education:** -1988, Duquesne University School of Law, Juris Doctorate 1985, The Pennsylvania State University, Baccalaureate, English and Philosophy**Qualifications for office:** Practicing law for over**PAULINE CALABRESE**

Campaign Web Site: <http://www.williamcaye.com>

Facebook: Caye for Judge

Twitter: @BillCaye4J

District: Allegheny County

Education: Duquesne University, School of Law, JD Duquesne University, Liberal Arts, BA

Qualifications for office: Recommended - Common Pleas Judge, Allegheny Co. Bar Assoc.; Endorsed for Judge, Allegheny Labor Council; Endorsed for Judge, Allegheny Co. Democratic Party; Endorsed by Char Valley Democrats; Endorsed by Teamsters Joint Council 40 & FOP#1; Past Sr. Deputy Attorney General, Assist. District Attorney

Q: Describe your legal experience in the Civil, Criminal, Family and Orphans Division and why this experience qualifies you to be a judge?

A: I have extensive trial verdict and judicial support experience in our Courts of Common Pleas sections. For over 27 years, I have been engaged on all sides of legal disputes in substantial, complex pretrial settlement negotiations, motions, litigation, trials & alternative dispute resolutions. This all-inclusive court room litigation experience, as described, starts at the minor judiciary and covers trial courts across our state - primarily in areas of child advocacy in Juvenile delinquency, Criminal prosecutions & Criminal defense. I teach professional education at The Cyril Wecht Institute.

Q: Describe an important personal trait that would make you an effective judge in the Court of Common Pleas.

A: Servant-leader is an important personal trait that would make me an effective impartial Common Pleas Judge. I listen and problem solve, and as such, I am well suited to make competent court rulings that will make a real and meaningful difference for enhancing quality of life issues to transform circumstances for all people with poise, honest communication, a sense of fairness, and compassion. Judges must lead in tough cases and communicate effectively and responsibly in proactive, holistic ways to conscientiously serve every citizen every time fairly and equitably.

Q: Who is your judicial role model and why?

A: RBG. Justice Ginsburg was my judicial role model because she understood how to relate to people she sometimes disagreed with, with class and humanity. As a Judge, she administered balanced justice and equity as Constitutionally charged with a profound, impartial, and independent daily duty of care. In so doing, RBG performed evolving judicial obligations that were entrusted by the will of the people, for the people, and to benefit all of the people. Her decisions including her dissents significantly impact many lives in a positive way. Judges like her must be critical thinkers and deliberate in their reasoning in order to solve problems and guide sound decision making.

JASON J. CERVONE

Party: Dem, Rep

Biographical Info:

Last Name: Cervone

First Name: Jason

Middle Name: James

Mailing Address: PO Box

101277, Pittsburgh, PA 15237

Campaign Phone: 412-716-1203

Campaign Email:

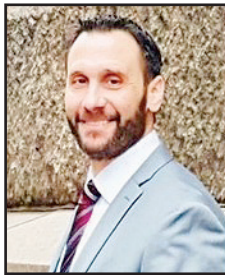
jasoncervoneforjudge@aol.com

Campaign Web Site: <http://www.FriendsofJasonCervone.com>

Facebook:

[cervoneforjudge](https://www.facebook.com/cervoneforjudge)

Twitter: N/A



JASON J. CERVONE

District: Court of Common Pleas Allegheny County Fifth Judicial District of Pennsylvania

Education: Villanova University, LLM Taxation; West Virginia University College of Law, Order of the Coif (Top 10%); Westminster College, Double Major Criminal Justice Political Science; Oliver High School

Qualifications for office: 20 years of Civil Litigation Licensed in 3 States (PA, TX, WV) Practice both State and Federal Jurisdictions Representing small and mid sized local businesses

Q: Describe your legal experience in the Civil, Criminal, Family and Orphans Division and why this experience qualifies you to be a judge?

A: I have had the opportunity to practice Civil litigation in more than 10 different jurisdictions in three different states. I have handled cases from the initial filing through post trial motions. Over the past twenty years I have handled thousands of cases involving federal employment law, commercial and real estate matters. In addition to my civil litigation practice, I have also had the opportunity to act as general counsel for small to midsize businesses throughout the region handling a variety of different legal matters. Finally, I have also handled multiple commercial financing transactions representing regional financial institutions. I believe my diverse legal practice is indicative of my unique qualifications to be a judge.

Q: Describe an important personal trait that would make you an effective judge in the Court of Common Pleas.

A: An important personal trait that I possess that would make me an effective judge is my willingness to put forth the necessary effort to educate myself on any issue I confront. Working hard and becoming knowledgeable on the issue at hand creates the opportunity to make a just and fair decision. Another key personal trait is my willingness to show respect to all parties involved when dealing with an issue. I believe these two traits that I possess in conjunction with my education, legal experience and life experience will make me an effective judge in the Court of Common Pleas of Allegheny County.

Q: Who is your judicial role model and why?

A: Judge David Cercone is my judicial role model. Ever since I first had the opportunity to sit with Judge Cercone, through a program offered at Westminster College, back in 1994 when he was on the bench in the Court of Common Pleas in Allegheny County, I thought I wanted to become a judge. As Judge Cercone transitioned from Civil to Criminal Court he was conciliating a multi-million dollar case, while at the same time having a sentencing hearing in a 1st degree murder trial. This experience was one of a few catalysts that ultimately lead me to go law school. Judge Cercone displayed the temperament and the knowledge that showed the parties involved respect while at the same time displaying his knowledge of the issues involved.

JESSEL COSTA

Party: Dem, Rep

Biographical Info:

Last Name: Costa

First Name: Jessel

Middle Name: August

Mailing Address: 174

Monastery Ave, Pittsburgh, PA

15203

Campaign Phone:

4124188085

Campaign Email: info@jesselcosta.com

Campaign Web Site: <http://www.jesselcosta.com>

Facebook: <https://www.facebook.com/jesselcosta>



JESSEL COSTA

facebook.com/jesselforjudge

Twitter: <https://twitter.com/jesselforjudge>

District: Allegheny County

Education: Central Catholic High School. Pitt

Undergrad: Pitt News; Phi Sigma Pi, honors fraternity; intern at PA Department of Labor and Industry & Pittsburgh City Council. Duquesne Law: Student Bar Association; Juris Magazine; intern at Pennsylvania Securities Commission & Pittsburgh Law Department.

Qualifications for office: Working on both sides of a trial—as a public defender AND prosecutor—coupled with working on every aspect of a case—from the investigatory stage through a jury verdict—demonstrates a holistic, comprehensive understanding of the legal system. Practiced in more than 20 counties in western PA.

Q: Describe your legal experience in the Civil, Criminal, Family and Orphans Division and why this experience qualifies you to be a judge?

A: Jessel began his career as an attorney at the Allegheny County Office of the Public Defender. As an Assistant Public Defender, he handled hundreds of cases and clients in all levels of the court system. For the next 6 years, Jessel served as a Deputy Attorney General prosecuting some of the most heinous crimes imaginable: child sexual abuse and child pornography offenses. As Deputy Attorney General, he presided over hundreds of investigations and cases in more than 20 counties throughout western Pennsylvania. Jessel now works in private practice where he specializes in criminal defense.

Q: Describe an important personal trait that would make you an effective judge in the Court of Common Pleas.

A: Jessel believes that his temperament, listening skills, familiarity with both sides of a dispute, and his ability to think outside of the box, are all qualities that would make an effective judge. Temperament ensures that a judge is respectful and kind. Listening skills ensure that a judge is reasoned and fair. Understanding issues from both sides ensures that a judge is free from bias. Ability to think outside of the box ensures that a judge will not be hamstrung by the status quo, but rather, look for creative solutions to make the system work better, and guarantee true justice.

Q: Who is your judicial role model and why?

A: Jessel's judicial role model is the late, great Ruth Bader Ginsburg. As the first Jewish woman on the Supreme Court, and only the second woman, Ginsburg was a trail-blazer and an inspiration. She was a champion of women's rights, and stalwart of progressive jurisprudence, especially as the Court grew more conservative during her tenure.

ALYSSA COWAN

Party: Dem

Biographical Info:

Last Name: Cowan

First Name: Alyssa

Middle Name: Burrell

Mailing Address: 3157

Beechwood Dr., Allison Park,

PA 15101

Campaign Phone: 202 352

6869

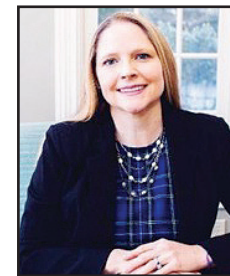
Campaign Email: Alyssa.Cowan@VoteCowan.com

Campaign Web Site: <http://votecowan.com/>

Facebook: <https://www.facebook.com/Cowan4Judge>

District: Allegheny County

Education: American University (Bachelor,



ALYSSA COWAN

Anthropology); University of Pennsylvania (Master of Social Work); Temple University Beasley School of Law (Juris Doctor)

Qualifications for office: 20 years experience working on behalf of the most vulnerable children, youth, and families—plus the only candidate in the field with a background founded in Social Work.

Q: Describe your legal experience in the Civil, Criminal, Family and Orphans Division and why this experience qualifies you to be a judge?

A: I've acted as sole counsel in approximately 8,000 child welfare hearings, 500 of which I have tried to verdict. I've provided legal trainings on a variety of child welfare laws across the state of Pennsylvania and have also participated in statewide workgroups dedicated to improving outcomes for court-involved youth. With my Master's Degree in Social Work, my entire career has been focused on finding the best outcomes for our court-involved youth—one that sets them on a path to be successful and productive in their lives. In my current position as an Assistant County Solicitor, I've represented our office in the County's Interagency Heroin and Other Opioids Task Force as well as the on Domestic Violence in Child Welfare pilot project.

Q: Describe an important personal trait that would make you an effective judge in the Court of Common Pleas.

A: An important personal trait of mine is my even-tempered personality. I've worked in child welfare for over twenty years as both a social worker and an attorney. My even-tempered nature allows me to approach my cases with a patient, open-minded, empathetic, and thoughtful attitude. I create the space for everyone I interact with to share their story so that they feel completely heard and hopefully understood as well. Even when the tempers of those around me flare, my calm demeanor helps to de-escalate situations and helps to facilitate respectful conversation and collaboration. I don't rush to conclusions and judgments. I also work hard to check my own biases and to engage in constant education about issues impacting the community at large.

Q: Who is your judicial role model and why?

A: A judicial role model of mine is Judge Kathryn Hens-Greco here in Allegheny County. She is a role model for me because she works to create a calm, non-threatening courtroom environment for the attorneys and families appearing before her. I work with many caseworkers who express fear of walking into certain courtrooms because the judges in those courtrooms have mercurial temperaments and they never know what to expect. This does not happen in Judge Hens-Greco's courtroom. Her courtroom management style also aligns with my vision of providing a trauma-informed courtroom setting where parties feel safe to tell their story to the judge. Similar to her as well, I would dedicate my time and effort to court reform and improvement projects

ROSEMARY CRAWFORD

Party: Dem

Biographical Info:

Last Name: Crawford

First Name: Rosemary

Middle Name: Christina

Mailing Address: The Committee to Elect Rosemary Crawford Judge P.O. Box 130, Wexford PA 15090

Campaign Phone: 412-345-8041

Campaign Email:



ROSEMARY CRAWFORD

committeetoelctrosemaryjudge@gmail.com

Campaign Web Site: <http://rosemarycrawfordforjudge.com>

Facebook: Rosemary Crawford for Judge 2021

Twitter: @ElectRosemaryCr

District: 5th Judicial District, Allegheny County

Education: Juris doctor Georgetown Univ. Law Center B.A. Rhodes College

Qualifications for office: 31 years as an attorney with Public Service Admitted to U.S. Supreme Court Broad range of legal experience

Q: Describe your legal experience in the Civil, Criminal, Family and Orphans Division and why this experience qualifies you to be a judge?

A: I am qualified for Judge because as a trial attorney, I know the rules of evidence, having served as conflict counsel representing juvenile defendants, and I provided pro bono protection/abuse representation and divorce in Family Court. I handled civil litigation such as personal injury, landlord tenant, product liability, contract and other matters in Civil Division. I have handled decedent's estate matters in Orphan's Court. I have served as an Arbitrator. I have also handled labor, employment, workers' comp, unemployment comp, black lung, vaccine litigation, criminal matters.

Q: Describe an important personal trait that would make you an effective judge in the Court of Common Pleas.

A: I am dedicated to justice and public service and equality, which will allow me to be a servant leader who will render decisions with compassion while treating individuals in my courtroom with dignity and respect based on the law and the facts and the constitution, rather than bias.

Q: Who is your judicial role model and why?

A: Supreme Court Justice Sonia Sotomayor because I admire her compassion, skill, and her service to the public.

MARC DAFFNER

Party: Dem, Rep

Biographical Info:

Last Name: Daffner

First Name: Marc

Middle Name: David

Mailing Address: Committee to Elect Marc Daffner 445 Fort Pitt Boulevard Suite 100 Pittsburgh, PA 15219

Campaign Phone: 412-281-5002

Campaign Email:

daffnerforjudge@usa.com

Campaign Web Site: <http://www.daffnerforjudge.com>

Facebook: www.facebook.com/daffnerforjudge

Twitter: twitter.com/daffnerforjudge

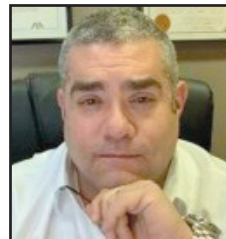
District: Allegheny County

Education: University of Rochester, B.A., Political Science, Minor, Economics, 1990 University of Pittsburgh School of Law, J.D., 1993

Qualifications for office: I have been in continuous legal practice for 28 years, representing clients in thousands of cases at both the trial and appellate levels throughout Pennsylvania. A number of my cases have received national prominence and I am considered a "Super Lawyer" (Top 5% in PA).

Q: Describe your legal experience in the Civil, Criminal, Family and Orphans Division and why this experience qualifies you to be a judge?

A: I have represented clients in every division of the Court over the past three decades. My experience is not limited to Allegheny County, and my legal practice has taken me into hundreds of courtrooms in thousands of



MARC DAFFNER

legal matters over the years, across our Commonwealth (in 33 of our 67 counties) at all levels of our Courts. This has given me a very rare and unique perspective in that, quite simply, I have seen and experienced the best and the worst that our Court system has to offer in a wide variety of contexts. I know what works and what doesn't, and, more importantly, how to understand and empathize with people from all walks of life. This allows me the ability to render meaningful and appropriate decisions from the bench.

Q: Describe an important personal trait that would make you an effective judge in the Court of Common Pleas.

A: I previously served a 6-year appointed term as an administrative judge for the Civil Service Commission in the South Hills, and I have actual experience adjudicating cases from the bench. I am very detail-oriented, and I tend to look at even the smallest elements of a particular case in order to provide a correct interpretation as opposed to an "off-the-cuff" determination of particular facts. To this end, I will not draw any conclusion until all evidence has been presented and every party has had a fair and ample opportunity to try their case and any legal issues which may have arisen are fully and completely researched.

Q: Who is your judicial role model and why?

A: Earl Warren, USSC Chief Justice, 1953-1969. Warren led the Court with transformative rulings in areas ranging from desegregation to free speech to criminal procedure. The Warren Court issued many landmark decisions, and Warren wrote the majority opinion in some of the most famous cases such as Brown v. Board of Education (1954), Miranda v. Arizona (1966), and Loving v. Virginia (1967). Amazingly, despite the various personalities and political leanings of the members of the Court, Warren was able to achieve unique consensus on the court, particularly in some of the most controversial cases.

ANTHONY DELUCA

Party: Dem, Rep

Biographical Info:

Last Name: DeLuca

First Name: Anthony

Mailing Address: 225 Ross Street, 4th Floor Pittsburgh, PA 15219

Campaign Phone: 412.401.6963

Campaign Email:

DeLucaforJudge2021@gmail.com

Campaign Web Site: <http://www.DeLuca4Judge.com>

Facebook: www.facebook.com/anthonydelucaforjudge

Twitter: twitter.com/deluca4judge

District: Allegheny County/5th Judicial District of Pennsylvania

Education: Boston College, 1994 University of Pittsburgh School of Law, 1997, Magna Cum Laude

Qualifications for office: Highly Recommended by the Allegheny County Bar Association Instrumental in Developing Mental Health Court in Allegheny County. Only Union Labor Attorney in the Court of Common Pleas race. Has represented working families for better wages, benefits and working conditions for well over a decade.

Q: Describe your legal experience in the Civil, Criminal, Family and Orphans Division and why this experience qualifies you to be a judge?

A: The most impactful period of my career is when I worked to develop the Mental Health Court in Allegheny County. I was able to experience the incredible benefit of working in a collaborative way in the Criminal Justice System to treat offenders and prevent recidivism. I have a wide variety of experience in the Criminal Courts as a Criminal defense attorney for over 15 years and before that an Assistant District Attorney. In my career I have



ANTHONY DELUCA

been involved in hundreds of trials. I have also practiced in the civil courts as the only union side labor attorney in the Court of Common Pleas race. I have been representing unions as a substantial part of my career for over a decade. Finally, I have done some work in every of the Divisions.

Q: Describe an important personal trait that would make you an effective judge in the Court of Common Pleas.

A: Many people in my family are school teachers including my parents, grandmother, Aunts, Uncles and cousins. When I thought of going into the teaching profession I was warned that I was not patient enough. Since that time, through life experience and being the father of three kids, I have learned patience. That patience is necessary in a judge because a judge should take the time to lean who is before the bench to best render decisions. Moreover, particularly when a defendant is in need of treatment, a judge should be patient in allowing that treatment to take effect.

Q: Who is your judicial role model and why?

A: I clerked for Judge Maureen Lally-Green on the Pennsylvania Superior Court. She was a shining example of the traits of intelligence, passion, work ethic and fair mindedness that a great judge must possess.

RICHARD THOMAS ERNSBERGER

Party: Dem, Rep

Biographical Info:

Last Name: Ernsberger

First Name: Richard

Middle Name: Thomas

Mailing Address: 355 Fifth Avenue, 12th Floor Pittsburgh, Pa 15222

Campaign Phone: 412-606-5298

Campaign Email:

richernsberger@gmail.com

Campaign Web Site: http://

www.rernsbergerforjudge.com/

Facebook: @ernsbergerforjudge

District: 5th Judicial District (Allegheny County Court of Common Pleas)

Education: The George Washington University, Bachelor of Science in Economics; Ohio Northern University, Pettit College of Law, Juris Doctorate

Qualifications for office: I have practiced law for 14 years, representing clients in state and federal court in a wide variety of civil cases. I started my career as a judicial clerk on the Pennsylvania Supreme Court. In addition, I have experience in administrative law, and recently worked for the SBA during the pandemic.

Q: Describe your legal experience in the Civil, Criminal, Family and Orphans Division and why this experience qualifies you to be a judge?

A: My experience qualifies me to be a judge. I have handled a variety of complex cases in the Court of Common Pleas, from their inception until conclusion. I also have the key temperament for a judge—compassion, decisiveness, and commitment to equal justice, learned from my time as a Pennsylvania Supreme Court law clerk, as a litigator, and as a community volunteer. The Allegheny County Bar Association rated me Recommended for judicial office. I primarily practice in the Civil Division, where I have represented plaintiffs and defendants in consumer protection, real estate, employment discrimination, personal injury, and commercial matters. I also practice in Orphans' Court, where I have administered estates and related litigation.

Q: Describe an important personal trait that would make you an effective judge in the Court of Common Pleas.

A: My commitment to equal justice will make me an



RICHARD THOMAS ERNSBERGER

effective judge and will ensure that all parties receive equal and respectful treatment in court. Everyone should be afforded the opportunity to stand before a judge who is impartial and fair, listens to the arguments presented by the parties without bias, and applies the facts to the law for a fair decision. My commitment to equal justice is grounded in my long-standing community and public service work, including providing counseling for the Small Business Administration's Office of Disaster Assistance during the pandemic, teaching legal education courses in ethics and insurance matters, and tutoring the Junior Achievement financial education curriculum at Kelly Elementary in Wilkinsburg.

Q: Who is your judicial role model and why?

A: Ruth Bader Ginsburg's dedication to the law inspired me to be an attorney. Justice Ginsburg made well-reasoned and fair decisions, and instilled confidence in the courts. In high school, I followed the landmark United States Supreme Court case of United States v. Virginia in the newspaper. The case involved gender-based admission to the Virginia Military Institute. Justice Ginsburg, writing for the majority, struck down the Virginia Military Institute's male-only admission policy. Not only did the opinion reaffirm my strong belief in equal protection for all, but I found the opinion to be clear, concise, and forthright - a model that I will follow when elected to the Court of Common Pleas.

BRIAN FLAHERTY

Party: Dem

Biographical Info:

Last Name: Flaherty

First Name: Brian

Middle Name: D

Mailing Address: 528 Ogden Ave Apt 2

District: Forest Hills

Education: 1985

Pennsylvania State

University - Bachelor of Arts in Telecommunications.

1991 Duquesne University

School of Law - Juris Doctor. 2007-8 California

University of Pennsylvania - Certification as

Secondary School Teacher in 4 content areas:

Citizenship, Social Studies, Communication and Health.

Qualifications for office: I am a member in good standing of the bar of the Commonwealth of Pennsylvania and the bar of the United States District Court for the Western District of Pennsylvania. I am also a certified secondary school teacher in the Commonwealth of Pennsylvania and the State of California.

Q: Describe your legal experience in the Civil, Criminal, Family and Orphans Division and why this experience qualifies you to be a judge?

A: Since 1991, I have litigation experience in both state and federal courts. I have represented clients with a wide variety of legal issues in Allegheny County and many surrounding counties. I have experience with motions practice and all forms of discovery. I have experience with preliminary hearings, bond hearings, pretrial motions, trial, post-trial motions and appeal. I have tried jury trials in both civil and criminal courts. I have successfully argued a case on appeal. I have experience with legal research and writing as I have drafted motions, petitions, pleadings, legal memoranda, legal briefs, legal opinions and other legal documents. I have experience in complex litigation. I have experience working remotely as



BRIAN FLAHERTY

a document reviewer.

Q: Describe an important personal trait that would make you an effective judge in the Court of Common Pleas.

A: I am honest and independent. I respect people regardless of race, religion, gender or political affiliation. I am kind and compassionate. People in my courtroom will be heard and justice will be served. I do not play favorites. I do not favor special interests. I don't play games. I am hard to fool. I have an appreciation for hard work. I have a variety of life experiences and I too have struggled. I was a union laborer, bus driver, and car salesman. I also worked with some great lawyers and the Commonwealth Court of Pennsylvania. I worked for President Joe Biden at Capitol in Washington DC when he was the Chairman of the United States Judiciary Committee. I have been blessed to know many people of character and I have learned from them all

Q: Who is your judicial role model and why?

A: Pete Flaherty is my role model. He is my Dad. He passed away in 2005 and I miss him every day. Like his Dad, he was first and foremost a kind person. He always treated people right. He came from very humble roots. His mother and father immigrated to America from Ireland. He grew up on the North Side. He fought in WWII and his father fought in WWI. His mother was a maid and his father was a street car driver. He was the first one in his family to graduate from college and he went to law school. I never heard him use a racial slur or degrade anyone. He was the Mayor of Pittsburgh and a former Allegheny County Commissioner. He was intelligent and genuine. He liked people. He had the respect of his political adversaries as he was always honest

Mark Patrick Flaherty

Party: Dem, Rep

No Response

RYAN O. HEMMINGER

Party: Dem, Rep

Biographical Info:

Last Name: Hemminger

First Name: Ryan

Middle Name: Orville

Mailing Address: 4 Colonial Drive McKeesport, PA 15135

Campaign Phone: 412-297-3131

Campaign Email: info@

hemmingerforjudge.com

Campaign Web Site: http://

hemmingerforjudge.com

Facebook: www.facebook.com/hemmingerforjudge

Twitter: https://twitter.com/Hemminger4Judge/

Education: Elizabeth Forward High School, Bethany College, American University, Duquesne University Law School

Qualifications for office: After law school, I clerked for Pennsylvania Supreme Court Chief Justice, Ralph J. Cappy and then Superior Court Judge Maureen Lally-Green. Since 2008, I have been a litigation attorney with the law firm Leech Tishman, where I represent clients in cases throughout the United States.

Q: Describe your legal experience in the Civil, Criminal, Family and Orphans Division and why this experience qualifies you to be a judge?

A: My work in private practice has been focused on Civil and Orphans Division matters. I have represented individuals to enforce statutory and



RYAN O. HEMMINGER

constitutional rights in Federal and State Courts throughout the United States, with the bulk of this practice in the Allegheny County. In one notable case, I represented a former Veterans Administration doctor after he was fired in retaliation for exercising his First Amendment rights by bringing public attention to issues impacting the healthcare of veterans. I have also represented businesses in a variety of cases, including construction matters. In Orphans Division, I have represented clients in multiple matters including protection of special needs trusts and will contests.

Q: Describe an important personal trait that would make you an effective judge in the Court of Common Pleas.

A: My strengths are my compassion, commitment to a justice system that works for everyone, my work ethic and decisiveness. I have demonstrated these traits throughout my professional career and in public service as a School Director. As a litigator in cases across the country, I have experienced and observed too many judges who lack one or more of these traits, which destroys the fundamental principles of due process and tarnishes the legal system. I want to help change this by serving as the type of judge I want to be in front of as an advocate. My objective as a judge will be for all lawyers and parties to know that I have thoroughly reviewed their arguments and have rendered an informed, unbiased decision based on the law.

Q: Who is your judicial role model and why?

A: There is no one judge I would characterize as my judicial role model. There are several judge's with traits I admire and would try to emulate if elected. For example, I had the privilege of meeting Justice Ruth Bader Ginsburg when I was sworn in as a member of the Bar of the United States Supreme Court. I have great respect for her compassion as a jurist, strength, and intellect. These are three characteristics of a great judge. On the opposite end of the political spectrum is Justice Antonin Scalia, who I also had the privilege of meeting. He also had tremendous intellect, judicial discipline and a devotion to constitutional separation of powers between the three branches of government. These are also important traits for a judge.

NICOLA HENRY-TAYLOR

Party: Dem

Biographical Info:

Last Name: Henry-Taylor

First Name: Nicola

Mailing Address: PO Box 81578, Pittsburgh, PA 15217

Campaign Email: info@nicola4judge.com

Campaign Web Site: <http://nicola4judge.com>

Facebook: <https://www.facebook.com/Nicola4Judge>

Twitter: <https://twitter.com/Nicola4J>

District: Allegheny County

Education: Slipper Rock University, 1993 Duquesne University School of Law, 1996

Qualifications for office: I have 25 years of experience practicing law, including clerking for judges, running the county mental health court, and private practice focusing on family and criminal law.

Q: Describe your legal experience in the Civil, Criminal, Family and Orphans Division and why this experience qualifies you to be a judge?

A: I have experience arguing in front of every division of the Court of Common Pleas. As an assistant District Attorney, I ran the County's Mental Health Court. In my private practice, I focus on family and criminal court matters. I am often appointed to be a Guardian



NICOLA HENRY-TAYLOR

ad Litem, for a child, and represent an Alleged Incapacitated adult in Orphan's court. If elected, I want to be a family court judge and continue to do that incredibly important work.

Q: Describe an important personal trait that would make you an effective judge in the Court of Common Pleas.

A: My lived experiences make me perfectly suited to be a judge in the Court of Common Pleas. As an immigrant and black woman, I know the issues facing those communities and the under-representation, and systemic bias, faced in the judicial system. As an adoptive mother, I know the importance of the family division and the profound impact the court has on families every day.

Q: Who is your judicial role model and why?

A: Judges are leaders who set the tone of the courtroom environment. Judges like Judge Clark, Judge Hens-Greco, Judge Bush, Judge McGaugh and Judge Williams who hire black staff, expect nothing but professionalism from everyone in their chambers are great examples. These Judges, and others like them, advocate for trauma informed courts, training on implicit bias and inclusive environments.

GEORGE HEYM

Party: Dem

Biographical Info:

Last Name: Heym

First Name: George

Mailing Address: 326 Anita Ave Pittsburgh, PA 15217

Campaign Phone: 412-422-5003

Campaign Email: george.hey@comcast.net

Campaign Web Site: <http://www.Heym4Judge.com>

Facebook: [Facebook.com/hey4judge](https://www.facebook.com/hey4judge)

Twitter: @georgehey

District: Allegheny County

Education: Duquesne University, BA 1994 University of Pittsburgh School of Law, JD, cum laude, 1998

Qualifications for office: Highly Recommended by the Allegheny County Bar Association. I spent 7 years prosecuting child abuse and homicide cases in Allegheny County. For the past 15 years, I have been a criminal defense attorney. I have done over 100 Jury trials and hundreds of non-jury trials. I am in a courtroom every day.

Q: Describe your legal experience in the Civil, Criminal, Family and Orphans Division and why this experience qualifies you to be a judge?

A: The vast majority of my time over the last 20 plus years has been spent in Criminal Court. Common Pleas Court is the trial court in Pennsylvania. Thus, judicial candidates should have actual trial experience to inform their decisions. How can a Judge work to fix systemic injustice in the criminal justice system if he/she can't even recognize the underlying systemic issues. Over, the last 20 plus years, I have tried over 100 jury trials and hundreds of non-jury trials. This experience is why I am Highly Recommended by the Allegheny County Bar Association. It will allow me not only to recognize the problems in our criminal justice system but the experience to know how to fix them.

Q: Describe an important personal trait that would make you an effective judge in the Court of Common Pleas.

A: Empathy. I am a product of the Allegheny County Common Pleas Court. Forty years ago, I was the



GEORGE HEYM

subject of a drawn out contentious custody case in Allegheny County Orphan's Court. Under the state of PA law at the time, the decision should have been rather obvious (and likely would have led to disastrous results for me). However, the Judge thought outside the box and in doing so changed the law, and my life, for the better. This isn't just an interesting backstory. I personally experienced what it feels like to be swept up in the court system. I personally experienced what it is like to stand in front of a Judge, powerless. That experience taught me how every decision a Judge makes can permanently impact someone's life.

Q: Who is your judicial role model and why?

A: Justice William Brennan. He embodied the belief that The Constitution must "live and grow" as society changes to achieve Justice. Also, that the Judiciary must never stop working towards those ideals but must always strive to make our society more fair and more just for all. The Law cannot remain static—as society, technology and economic conditions change the Law must change with them. It is only by this process that we can change the systemic procedures that ensure unfair outcomes.

RICK HOSKING

Party: Dem

No Response

ELLIOT HOWSIE

Party: Dem, Rep

Biographical Info:

Last Name: Howsie

First Name: Elliot

Mailing Address: Keep Judge Elliot Howsie PO Box 7273 Pittsburgh, PA 15213

Campaign Phone: 724-705-4867

Campaign Email: elliott@elliethowsie.org

Campaign Web Site: <http://www.elliethowsie.org>

Facebook: <https://www.facebook.com/ElliottHowsie2021>

Education: Central Catholic High School, class of '86; Indiana University of Pennsylvania, BA in Criminology; Indiana University of Pennsylvania, MA in Criminology; Duquesne School of Law, class of '98
Qualifications for office: Social Worker for court-involved families; Assistant District Attorney; Director of the Public Defender's Office; Judge in the Family Division; Judge in the Criminal Division; Highly Recommended by the Allegheny County Bar Association

Q: Describe your legal experience in the Civil, Criminal, Family and Orphans Division and why this experience qualifies you to be a judge?

A: I have been practicing law in Allegheny County for more than 20yrs. I understand the generational impact that our courts have on families and communities. In my role as the Director of the Public Defender's Office, I was responsible for ensuring that every person that was unable to afford an attorney received competent effective legal representation. As a prosecutor in the District Attorney's Office, I was responsible for prosecuting perpetrators of physical and sexual abuse of children. As a defense attorney, I was responsible for protecting the rights of people accused of a crime, and representing people in family court matters. My previous work experience qualifies me to continue serving in the Family and Criminal Division of the Court.

Q: Describe an important personal trait that



ELLIOT HOWSIE

would make you an effective judge in the Court of Common Pleas.

A: I am an effective judge because I am patient and compassionate. I believe that my background, including growing up in a low income community, and working in the social service field, has given me a perspective and understanding of the issues that typically result in members of our communities becoming involved in the court system. Given my legal experience as a prosecutor and a defense attorney, I understand that there are two sides to every story and as a judge I must listen to both sides and allow everyone the opportunity to be heard prior to rendering a decision. Therefore, I believe that my character traits and life experiences have enabled me to develop a fairly unique judicial approach to presiding over cases in the court system.

Q: Who is your judicial role model and why?

A: Judge Kim Clark, our current President Judge in the Allegheny County Court of Common Pleas. Judge Clark is a role model for me because she grew up in Wilkensburg a short distance from my childhood home and she was the first African American Judge to become President Judge in the history of our Court. Judge Clark treats everyone in a fair and equitable manner and affords everyone an opportunity to be heard prior to rendering a decision. Judge Clark is an extremely accomplished jurist who ensures that everyone appearing before her is treated with dignity and respect. She allows her qualifications to speak for themselves and she has performed her duties as President Judge with compassion and humility during times of uncertainty.

CLINT KELLEY

Party: Dem

Biographical Info:

Last Name: Kelley

First Name: Gregory

Middle Name: Clinton

Mailing Address: 118

Abington Drive Pittsburgh, PA 15219

Campaign Phone: (412) 901-8689

Campaign Email: gckesq@gmail.com

Campaign Web Site: <http://clintkelley4judge.com>

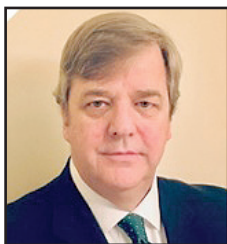
District: Allegheny County

Education: Mediation Certification - 2019 Case Western Reserve University School of Law - 1988 Washington & Jefferson College - 1985

Qualifications for office: The Allegheny County Bar Association has rated me as Recommended. I have nearly 33 years of trial experience. With 9 vacancies on the Court and a backlog of cases from the COVID-19 shutdowns and slowdowns, it is important for our 9 new Judges to have the most trial experience available.

Q: Describe your legal experience in the Civil, Criminal, Family and Orphans Division and why this experience qualifies you to be a judge?

A: I have been practicing law since 1988. While I have practiced law in all 4 Divisions of the Court of Common Pleas of Allegheny County, the majority of my experience has been in the Civil Division. With nearly 33 years of trial experience. I have tried 65 cases to verdict, plus 5 complex FINRA Arbitrations, 6 U.S. Army Personnel Elimination Boards, and a significant number of County Arbitrations, Workmen's Compensation cases, and Social Security Disability cases. I also serve as an Mediator and Arbitrator on cases in the Civil Division. As an Arbitrator, I served on the first 2 Arbitration cases that were tried remotely after COVID-19. I then was asked to serve on a



CLINT KELLEY

committee to help design the Civil Division's Remote Arbitration Program.

Q: Describe an important personal trait that would make you an effective judge in the Court of Common Pleas.

A: I am compassionate, I have a sense of fairness, and I am respectful of others. I believe these traits will help me if I am fortunate to be elected Judge. I will treat people who come before me with respect. And I will endeavor to reach conclusions on cases, motions and other issues, that are fair under the circumstances presented.

Q: Who is your judicial role model and why?

A: Judge W. Terrence O'Brien of the Court of Common Pleas of Allegheny County. He was the Judge on my first trial. During the trial, Judge O'Brien was patient with me and gave me the necessary latitude to work through a complicated fact pattern in that case. I was grateful for his patience, and the experience gave me the confidence to go forward and try more cases. Later in Judge O'Brien's career, I had a number of Civil cases before him for pre-trial conciliations. I was impressed with how hard he worked to bring the parties together and get cases resolved. If I am elected, I will try to put the time in and work hard to help the parties get their cases resolved. I will also try to help young lawyers just has Judge O'Brien helped me.

DANIEL J. KONIECZKA, JR.

Party: Dem, Rep

Biographical Info:

Last Name: Konieczka, Jr.

First Name: Daniel

Middle Name: J

Mailing Address: 89 Chapel Drive Pittsburgh Pa 15237

Campaign Phone: 412 335-1361

Campaign Email:

dankforjudge@gmail.com

Campaign Web Site: <http://www.dankforjudge.com>

Facebook: Facebook/dankforjudge

Education: University of Pittsburgh - BA - 1982 University of Pittsburgh - JD - 1986

Qualifications for office: Highly recommended by the ACBA. I am a practicing attorney with over thirty-four years of trial experience. I am a sitting Magisterial District Judge. I also served as Deputy District Attorney in Allegheny County for over 23 years. Finally, I have 8 years of criminal defense/juvenile experience

Q: Describe your legal experience in the Civil, Criminal, Family and Orphans Division and why this experience qualifies you to be a judge?

A: As a magisterial district judge, I currently enter judgments in hundreds of civil, criminal and juvenile matters. As a Deputy District Attorney, I personally litigated or directed the prosecution of thousands of cases to include the most violent offenders and also oversaw the adult certification of appropriate juvenile matters. During my tenure, I was sworn in as a federal Special Assistant United States Attorney for the investigation, indictment and prosecution of the violent street LAW gang. As a criminal defense attorney, I handled both criminal and juvenile matters.

Q: Describe an important personal trait that would make you an effective judge in the Court of Common Pleas.

A: I possess, as a current trier of fact, the trait of a thorough listener. A thorough listener possesses the courtroom knowledge and experience to discern, what sometimes is not well-articulated, but highly relevant to the issue at hand. A thorough listener permits all



Daniel J. Konieczka, Jr.

sides an equal opportunity to present their perspective. In addition, a thorough listener must understand how the law applies to the established facts. Finally, a thorough listener enters a judgment based on their common sense, personal integrity and empathy to all parties.

Q: Who is your judicial role model and why?

A: I have appeared in many courtrooms and observe many fine jurists. U.S. District judges, Hornak, Barry-Fischer, and Ambrose modeled demeanor, thoroughness and courtroom command respectively. Common Pleas judges Allen (Superior Court), McDaniel, and Borkowski modeled fairness, confidence and command of the law respectively. Justice David N. Wecht is a model for his opinion writing clarity. However, to select one, the Honorable Jeffrey A. Manning is closest in possessing all of the aforementioned traits. Honorary mention to late judge Robert Dauer whose affability is unmatched.

SABRINA KORBEL

Party: Dem, Rep

Biographical Info:

Last Name: Korbel

First Name: Sabrina

Mailing Address: P.O. Box 22411 Pittsburgh, PA 15222

Campaign Phone: 412-453-6263

Campaign Email:

SabrinaForJudge@gmail.com

Campaign Web Site: <http://www.SabrinaForJudge.com>

Facebook: <https://www.facebook.com/TeamSabrina2021>

Twitter: @SabrinaKorbel

District: Allegheny County

Education: Susquehanna University Selinsgrove, Pennsylvania Bachelor of Arts in Political Science - 1999 Graduated cum laude with Univ. Honors University of Pittsburgh School of Law Pittsburgh, Pennsylvania Juris Doctor - May 2002 President, Student Bar Association 2002 Student Leader of the Year Award

Qualifications for office: Trial Attorney with nearly 20 years experience representing the most resource burdened in Family Law matters. Highly Recommended - ACBA. Serves on panels and roundtables as an expert in domestic violence, trauma & safety planning. Works to promote safe, respectful & equal access to justice for all.

Q: Describe your legal experience in the Civil, Criminal, Family and Orphans Division and why this experience qualifies you to be a judge?

A: I have managed and provided legal representation to victims of domestic violence in over 7000 cases in the Family Division, including participation in negotiations, motions, hearings, and trials before Judges, Masters and Hearing Officers. Many of these matters have related cases in the Criminal Division allowing me to gain extensive knowledge of the criminal justice system and areas of needed reform. In the Orphans Division, I have handled adoption cases. I do not practice in the Civil Division, but I do oversee cases as a Hearing Officer (like a judge) for the Allegheny County Retirement Board. This experience has given me the knowledge and temperament needed to take the bench and make a positive impact on Allegheny County families.

Q: Describe an important personal trait that would make you an effective judge in the Court of Common Pleas.

A: Empathetic. This does not mean that as a judge I would identify with each person's authentic lived experience. It does mean that I will acknowledge my



SABRINA KORBEL

bias, value our differences and accept that a person's lived experience affects how they see the world and make decisions for themselves and their families. Also, I have always recognized that most people who access the justice system have experienced some level of trauma and they need to feel safe to share their stories, that their voice is heard in the courtroom and that they are engaged in their legal case. As a judge, I would always show empathy and promise to apply my twenty years of training to ensure the use of a trauma informed approach and to strive to be culturally competent.

Q: Who is your judicial role model and why?

A: The Honorable Kathleen Mulligan. She is a devoted and dedicated public servant. Judge Mulligan prioritizes the needs of the court's true customers, the litigants appearing before her, protecting their rights and explaining procedures, even when it inconveniences her or requires the commitment of additional time and resources. She treats people fairly and with respect, ensuring that they are engaged in their legal cases and understand the results and next steps. She identifies systemic changes that advance access to justice, collaborating with other individuals doing the work to ensure holistic improvements. She is humble, impartial and hardworking and has always strived to make the court equitable and accessible.

BRIAN SAMUEL MALKIN

Party: Dem

Biographical Info:

Last Name: Malkin

First Name: Brian

Middle Name: Samuel

Mailing Address: 2347 Nevin Drive Pittsburgh PA 15237

Campaign Phone: 412-715-7366

Campaign Email:

malkin4judge@gmail.com

Campaign Web Site: <http://malkin4judge.com>

Facebook: <https://www.facebook.com/brian.malkin1/>

Twitter: <https://twitter.com/Malkin4Judge>

District: Allegheny County -5th Judicial District

Education: UNIVERSITY OF PITTSBURGH

SCHOOL OF LAW, Pittsburgh, PA, J.D. May 1993

WASHINGTON AND JEFFERSON COLLEGE,

Washington, PA, B.A., cum laude, May 1990 Majors:

Computer Science/Mathematics & Philosophy Honors:

Phi Beta Kappa; Academic Dean's List (4 years);

Philosophy Prize

Qualifications for office: I have worked as a trial attorney for 27 years. I have volunteered for no-income clients. I am a local councilman for my community. The Bar recommended me as a candidate for trial judge. I am a 2021 Super Lawyer, AV rated for ethics and legal ability. I fight for my clients every day.

Q: Describe your legal experience in the Civil, Criminal, Family and Orphans Division and why this experience qualifies you to be a judge?

A: Judges are civil servants for their community. I have spent 27 years as a civil litigator, mostly, in the Civil Division. I have prepared and tried all types of cases as lead counsel, both juries, non-juries, and arbitrations as both a plaintiff's attorney and as a defense attorney. I have drafted and filed pleadings and discovery, been involved in motions practice, pre-trial, and post-trial work before the Court. These cases include car accidents, slip and falls, complex business litigation, medical malpractice, employment and business matters, name change petitions,

landlord/tenant matters, and other personal injury cases. I have handled so many types of cases in so many different courtrooms, I am ready to effectively serve my community.

Q: Describe an important personal trait that would make you an effective judge in the Court of Common Pleas.

A: The ability to listen with compassion and empathy will make me an effective judge. No matter how small a case or whether a party has a lawyer, they are entitled to a fair day in court. Each litigant must be treated with respect in order to ensure that everyone receives their fair day in court. Listening in this manner is the best opportunity to arrive at a just decision. This is especially so when parties without a lawyer enter the courtroom. They may not use all the right legal terms or be familiar with courtroom procedures, or be nervous, or intimidated, or angry, but a good judge will listen, spot the issues, and get the correct and relevant evidence into the record, apply the applicable law, and then make the best decision.

Q: Who is your judicial role model and why?

A: My judicial role model is Judge Rosalia Parker. My first job as a lawyer was working for Judge Parker. She taught me the hard work of listening to all of the evidence, reviewing it, and applying the law to get a fair and just decision. She taught me how to eliminate bias in decision making by being aware of and making adjustments for cultural differences, nervousness, and demeanor of witnesses because of their upbringing and education. She taught me how to write well-reasoned decisions so that anybody reviewing a decision understands the evidence that was relied upon and the law that was applied. She showed me that even if a party has no lawyer a judge has a duty to get the party's testimony and evidence to decide a case fairly.



BRIAN SAMUEL MALKIN

LISA MIDDLEMAN

Party: Dem, Rep

Biographical Info:

Last Name: Middleman

First Name: Lisa

Mailing Address: 2615 Glenchester Road, Wexford, PA 15090

Campaign Phone: (412) 652-5743

Campaign Email: info@lisamiddleman.com

Campaign Web Site: <http://lisamiddleman.com>

Facebook: <http://facebook.com/lisamiddlemanforjudge>

Twitter: <https://twitter.com/lisamiddleman>

District: Allegheny County

Education: 1980-1983 Duke University, Bachelor of Arts in History; 1982 (summer) Carnegie Mellon University, Computer Science; 1984-1987 University of Pittsburgh School of Law, Juris Doctorate; 2012 Community College of Allegheny County "Fundamentals of Supervision and Management"

Qualifications for office: Proficiency in the Rules of Evidence and Procedure that are essential to making correct rulings on case dispositive issues. Taught many continuing legal education classes for attorneys. Training for magistrates seeking to hear homicide cases. Conducted study on racial disparity in jury panels.

Q: Describe your legal experience in the Civil, Criminal, Family and Orphans Division and why this experience qualifies you to be a judge?

A: In addition to representing those charged with



LISA MIDDLEMAN

all grades of criminal offenses in adult and juvenile courts, I have represented witnesses and victims at preliminary hearings, trials, motions, grand jury proceedings, mental health commitments, PFAs, and landlord/tenant disputes. As the first woman in the PD homicide unit, I have 34 years experience trying the most demanding and life-altering death penalty cases. I have demonstrated my dedication to the rule of law, ability to work hard to research and resolve complex issues, and a deep appreciation for the significance that my judgement may have, not only on the people who would appear before me, but on businesses, families and communities.

Q: Describe an important personal trait that would make you an effective judge in the Court of Common Pleas.

A: One of the personal traits that will make me an effective judge is my understanding that we are never finished learning. I am a perpetual student of the law, research in social science, and of the people around me. My willingness to be informed, not only by policies from other jurisdictions, statistics, texts and legal precedent, but from the experiences of people in our community, will allow me to continue to seek out solutions that are fair and harm reductive. We must continue to explore experiences that are different from our own in order to sharpen critical thinking skills, gain insight and perspective, and to expand our knowledge. No one is ever finished questioning and learning from their mistakes, triumphs and overall experiences.

Q: Who is your judicial role model and why?

A: My judicial role model is Earl Warren, former Chief Justice of the US Supreme Court. Warren's greatest strength was not scholarly writing, but rather in his ability to marshal support and lead the Court to decisions that recognized and expanded individual civil rights. Warren authored landmark decisions in *Miranda v Arizona* and *Brown v Board of Education*. He led a Court that examined legal disadvantage by virtue of race, poverty, sex and political principles. Warren faced early backlash for decisions upholding one man one vote, interracial marriage, and the rights of accused in criminal cases, yet he remained firm that "when the rights of any individual or group are chipped away, the freedom of all erodes."

JOSEPH PATRICK MURPHY

Party: Dem, Rep

Biographical Info:

Last Name: Murphy

First Name: Joseph

Middle Name: Patrick

Mailing Address: 310 Grant Street, Suite 3309

Campaign Phone: 412-521-2000

Campaign Email: jmurphy@jmurphyfirm.com

Campaign Web Site: <http://josephpatrickmurphy.com>

Facebook: <https://www.facebook.com/josephpatrickmurphy>

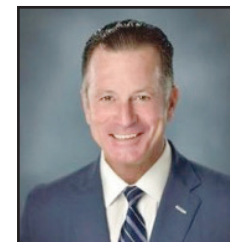
District: Fifth Judicial District of Pennsylvania (Allegheny County)

Education: B.A. Stockton College J.D. Duquesne University Law School

Qualifications for office: Over Twenty Years' Experience Representing People in Court Matters

Q: Describe your legal experience in the Civil, Criminal, Family and Orphans Division and why this experience qualifies you to be a judge?

A: I have been practicing actual courtroom law for over twenty years. I have a long history of



JOSEPH PATRICK MURPHY

representing PEOPLE. I was never a prosecutor or foreclosure attorney, I represented PEOPLE. During the sub-prime crisis I recruited and trained attorneys all over the commonwealth in how to defend people against predatory collections lawsuits. We saved millions of dollars for Citizens of our Commonwealth. This work went on for over a decade and involved endless appearances in court and everyone involved in the effort got a lot of experience. As a Roman Catholic, I also have a long history representing people in humanitarian immigration that dates back to the collapse of the Soviet Union.

Q: Describe an important personal trait that would make you an effective judge in the Court of Common Pleas.

A: Listening. I listen to people. I even try to create space for them to speak in. Listening can be an act of respect, even humility. Judges must show, and actually have, respect for the Citizens that come before them. A Judge that shows humility and respect will usually find those qualities reciprocated by others around them.

Q: Who is your judicial role model and why?

A: R. Stanton Wettick. He was even tempered, patient, respectful of the litigants and public. Also very smart, a hard worker. Judge Wettick's rulings were very consistent. This made our court system very efficient.

MIK PAPPAS

Party: Dem, Rep
Biographical Info:
Last Name: Pappas
First Name: Mik
Mailing Address: P.O. Box 4951, Pittsburgh, PA 15206
Campaign Phone: 412-779-2587

Campaign Email: hello@mikpappas.com

Campaign Web Site: <http://mikpappas.com>

Facebook: @mikpappas

Twitter: @mikpappas

District: Pittsburgh, 11-13

Education: Graduate of Central Catholic High School, Pittsburgh, PA; earned a B.A. from Lehigh University in Bethlehem, PA with a major in American Studies and a minor in Economics; and earned a J.D. from the University of Pittsburgh School of Law with a Certificate in Comparative and International Law

Qualifications for office: More than 20 years of experience in community, government and the law. Multidisciplinary attorney with a focus in innocence defense and civil rights. Elected magisterial district judge from Highland Park. Demonstrated leadership in advancing a more equitable and restorative local justice system.

Q: Describe your legal experience in the Civil, Criminal, Family and Orphans Division and why this experience qualifies you to be a judge?

A: I practiced in Courts of Common Pleas throughout western PA, mostly in Criminal and Civil Divisions. My appellate practice resulted in statewide precedents in support of marriage equality (<https://tinyurl.com/yn95kc43>) and free speech (<https://tinyurl.com/rxcnecp>). Considerable portions of my practice were devoted to plaintiff-side employment discrimination and protecting victims of predatory lending in federal bankruptcy court. As a judge, I have presided over thousands of criminal and civil matters. I have helped reduce evictions by 40% (<https://tinyurl.com/ha3e7r6r>), eliminate cash bail (<https://tinyurl.com/ha3e7r6r>),



MIK PAPPAS

com/pvmze637), and create restorative alternatives for people who cannot afford their court debt (<https://tinyurl.com/ya5cbjpm>).

Q: Describe an important personal trait that would make you an effective judge in the Court of Common Pleas.

A: I am a devoted father of two and husband to a first-generation immigrant who also an accomplished research scientist. I grew up in East Liberty during the War on Drugs era, and I personally have experienced the long-term process of recovering from the traumas of domestic violence, parental incarceration, and losing loved ones to gun violence and addiction. Importantly, I have shown my commitment to community and leadership through more than 20 years of working in community, government and the law. This broad range of experiences has made me an exceedingly effective judge, and the kind of judge that I believe we need to lead us from an era of reckoning with the justice system, to an era of deep reconciliation, truth telling and reform

Q: Who is your judicial role model and why?

A: I greatly admire Justices Brandeis and Ginsburg because they were brilliant, trailblazing judges who exemplified the bedrock democratic principle of judicial independence. For the same reasons, I would elect Judge A. Leon Higginbotham, Jr. of the U.S. District Court for the Eastern District of PA and the U.S. Court of Appeals for the 3rd Circuit as my judicial role model. When I became the only judge in PA to join other judges and judicial districts throughout the country in issuing a statement in response to the death of George Floyd (<https://tinyurl.com/5r69xv29>), I turned to his writings for guidance and cited a passage that he wrote about the authority of Congress to outlaw the "badges and incidents of slavery" under the 13th Amendment.

CHUCK PORTER

Party: Dem, Rep
Biographical Info:
Last Name: Porter
First Name: Chuck
Middle Name: John
Mailing Address: 202 Garden Lane 202 Garden Lane Glenshaw, PA 15116
Campaign Phone: 724-931-0385

Campaign Email: team@chuckporterforjudge.com

Campaign Web Site: <http://www.chuckporterforjudge.com>

Facebook: <https://facebook.com/ChuckPorterforJudge/>

District: Allegheny County

Education: BSBA Duquesne University 1982 JD Duquesne University School Law 1985-Law Review

Qualifications for office: I've been a trial lawyer for 36 years I have served as an Assistant District Attorney, And have been in private practice for 34 where I have practiced at some point in every division. I have contemporaneously served as a judicial law clerk for three common please court judges for nearly thirty years

Q: Describe your legal experience in the Civil, Criminal, Family and Orphans Division and why this experience qualifies you to be a judge?

A: I began my career as an assistant District Attorney where I represented the Commonwealth in pretrial and trial matters. I have been in private practice since September of 1987. I have practiced in each division at some point during my career. I have primarily been



CHUCK PORTER

a criminal defense lawyer throughout my private practice. I have accepted court appointments as well as private clients throughout my career. I have tried numerous jury trials in both the state and federal court systems throughout my thirty-six years of being a trial lawyer. I have been recognized by my peers as one of the best trial lawyers in America since 2006. Only two of the 39 candidates have achieved such a recognition. I've also represented the DA's office in civil matters

Q: Describe an important personal trait that would make you an effective judge in the Court of Common Pleas.

A: I believe I am even tempered and possess common sense. I have been viewed by my colleagues as a "lawyer's lawyer" I have appeared in front of numerous judges over the past thirty-six years all of these appearances have been learning experiences that better enable me to understand what makes an effective judge. My experience, temperament and reputation amongst my peers will make me an effective judge.

Q: Who is your judicial role model and why?

A: My judicial role model is Judge Gustave Diamond I had the pleasure of appearing before him in many cases in the US District Court. One noteworthy case involved 13 defendants and spanned 11 weeks of trial Judge Diamond efficiently handled such a large case. He was fair and even handed with all lawyers and parties. He was prepared at all times and thoughtfully handled all objections and evidentiary matters. His rulings were well thought out and supported by the law. He required the government to properly present their case. Judge Diamond's thoughtful, fair and even approach gave all in his courtroom a level playing field. He listened carefully to the arguments of the lawyers treated all with respect and made rulings consistent with the law.

ZEKE REDIKER

Party: Dem, Rep
Biographical Info:
Last Name: Rediker
First Name: Zeke
Middle Name: Kalman
Mailing Address: PO Box 42 Glenshaw, PA 15116
Campaign Phone: 412-639-3822

Campaign Email: elizabeth@zekeforjudge.com

Campaign Web Site: <http://ZekeforJudge.com>

Facebook: @ZekeforJudge

Twitter: @ZekeforJudge

District: Allegheny County

Education: University of Michigan Law School, Juris Doctor, Cum Laude (Dean's Scholar) University of Oxford, M.Sc. – African Studies, St. Anne's College, Oxford, UK (Rotary Scholar) Cornell University, Bachelor of Arts, Summa cum Laude (Cornell Presidential Research Scholar)

Qualifications for office: Senior Associate, Reed Smith LLP; Law Clerk, Hon. Helene White, U.S. Court of Appeals for the Sixth Circuit and Hon. Pamela Chen, U.S. Dist. Court for the Eastern Dist. of New York; Intern, Hon. James Boasberg, U.S. Dist. Court for the Dist. of Columbia

Q: Describe your legal experience in the Civil, Criminal, Family and Orphans Division and why this experience qualifies you to be a judge?

A: I have handled criminal, civil, and orphan's courts matters in the Court of Common Pleas. One of my most recent cases involved filing a Post-Conviction Relief Petition on behalf of a wrongfully-incarcerated client. I spent months developing a successful petition, arguing



ZEKE REDIKER

that the Judge on the Court of Common Pleas had erred by revoking my client's probation and sentencing him to 5-10 years in state prison. After we filed our petition, the prosecutor acquiesced to my client's release and he was immediately discharged and went home to his family. This case made me want to pursue a judgeship because I believe that we need more judges that will be compassionate and accountable to the communities they serve.

Q: Describe an important personal trait that would make you an effective judge in the Court of Common Pleas.

A: I think judges need to have an intimate understanding of the communities they serve, including knowledge of the different circumstances that children face growing up in the city of Pittsburgh. I am a proud graduate of Pittsburgh Public Schools. My experience at East Hills, a magnet school that drew kids from throughout the city, was formative. Although East Hills School closed in 2008, I remained involved with families and children in the neighborhood. Four years ago, I worked with Rep. Ed Gainey to establish the East Hills Back to School Drive, which works with community leaders to raise funds to purchase and distribute backpacks to families in the neighborhood.

Q: Who is your judicial role model and why?

A: I had the opportunity to clerk for Judge Pamela Chen at the U.S. District Court for the Eastern District of New York in Brooklyn and Judge Helene White at the U.S. Court of Appeals for the Sixth Circuit in Detroit. Judge Chen and Judge White are my judicial role models because they taught me how courts function from the inside out and the importance of good judges. I want to join the Court of Common Pleas so that I can use my legal knowledge to fairly serve people from many different backgrounds and communities in Pittsburgh. I am dedicated to ensuring that the cases of working people, vulnerable populations, and those without attorneys are fairly and fully heard and adjudicated.

MATT ROGERS

Party: Dem, Rep
Biographical Info:
Last Name: Rogers
First Name: Matthew
Mailing Address: PO Box 81857, Pittsburgh, PA 15217
Campaign Phone: 412-206-6712
Campaign Email: info@mattrogersforjudge.com
Campaign Web Site: <http://www.mattrogersforjudge.com/>
Facebook: <https://www.facebook.com/mattrogersforjudge>
Twitter: <https://twitter.com/MRogers4Judge>



MATT ROGERS

District: Fifth Judicial District of Pennsylvania
Education: Undergraduate: University of Mary Washington; Law School: Duquesne Law

Qualifications for office: Over 10 years of working with family law cases; Clerked in the Court of Common Pleas of Washington County; Rated as recommended by the Allegheny County Bar Association; Received the Pro Bono Legal Service Award for my work with indigent community members.

Q: Describe your legal experience in the Civil, Criminal, Family and Orphans Division and why this experience qualifies you to be a judge?

A: I began my legal career as a judicial law clerk in the Court of Common Pleas of Washington County and was involved in cases in the Civil, Criminal, Family, and Juvenile Divisions of the Court. During my tenure,

I participated in cases involving issues varying from mineral rights, to child endangerment, to capital murder. From there, I transitioned to private practice in a small general practice law firm. While there, I practiced in each of the four divisions of the Court of Common Pleas. Since then and for the past seven years, I have focused my practice in the area of family law, representing individuals in their divorce, custody, support, PFA, and juvenile dependency matters.

Q: Describe an important personal trait that would make you an effective judge in the Court of Common Pleas.

A: Commitment. I am committed to the family division of the court. Most judges, when elected to the bench, serve as much time as required in the family division but seek an avenue to a "more desirable assignment" in the civil or criminal division as soon as possible. This revolving door makes it hard for the family law division of the court to be effective. My commitment to family law means I plan to stay in that division. My sole goal is to become the most effective family law judge that I can be, so that the families of Allegheny County are before a judge that understands the law and is willing to help them navigate their case for the long term.

Q: Who is your judicial role model and why?

A: Like most individuals I imagine, I have more than one. However, one of my role models is Chief Justice Warren. He presided over a major revolution in judicial thinking in the US. His opinions helped to break down segregation and Jim Crow, strengthen protections against state abuse in the criminal system, and, close to my main legal focus, protected families through his opinion striking down bans on interracial marriage. He was not a perfect person or a perfect judge, and indeed he has some glaring flaws. For me though, it is inspirational to see someone rise to the challenge and use the law as a tool in creating a more just nation. I hope, in my own small way, to use the law to create a more just Allegheny County.

GIUSEPPE ROSSELLI

Party: Dem
Biographical Info:
Last Name: Rosselli
First Name: Giuseppe
Middle Name: GC
Mailing Address: 660 Lincoln Ave Suite 107 Pittsburgh, Pa 15202
Campaign Phone: 412-877-7370

Campaign Email: Giuseppe.Rosselli4Judge.com

Campaign Web Site: <http://www.Rosselli4Judge.com>

Facebook: <https://www.facebook.com/Rosselli4Judge>

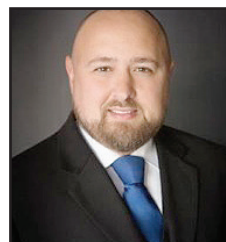
District: Allegheny County

Education: Earned B.A. in Criminal Justice and Political Science at Allentown College of St. Francis DeSales. Earned J.D. from the University of Pittsburgh School of Law.

Qualifications for office: I have been a trial lawyer for the past 20+ years. I have represented every case from Disorderly Conduct to Homicide. I have dedicated my career to the principles of equality, fairness and being thoughtful in the administration of justice.

Q: Describe your legal experience in the Civil, Criminal, Family and Orphans Division and why this experience qualifies you to be a judge?

A: I am a criminal defense attorney. It would be disingenuous to suggest that I am anything but a criminal defense attorney. Accordingly, 95% of my practices has been in the criminal courts and there are very few things I have yet to accomplish in



GIUSEPPE ROSSELLI

that system. In family division I have represented individuals in PFA actions, Custody, Support, Divorce and I have completed multiple juvenile trials. I have some limited experience in Civil Division. My Orphan's Court experience is limited to my role as a party to my daughter's adoption.

Q: Describe an important personal trait that would make you an effective judge in the Court of Common Pleas.

A: I have courage. I have dedicated my career to representing the accused. To do this effectively, one must possess courage to represent the unpopular client or issue. We, as a system, are at crossroad. Discussions of criminal justice reform has been the hot topic for the past four years. We are now presented with a generational opportunity with 9 open seats on the Court of Common Pleas. The work to be done will take decades, but it can and will be jumpstarted here if the right people are elected. Difficult conversations are required. I have the courage to lead those conversations.

Q: Who is your judicial role model and why?

A: Judge Beth A. Lazzara is my judicial role model. She currently sits in the Criminal Division of the Court of Common Pleas of Allegheny County. The characteristics that I value in a jurist are a positive temperament, an ability to make difficult and unpopular decisions, kindness for all that come before the court, and a commitment to helping others that is manifested in diversion over incarceration. Judge Lazzara checks all of those boxes and I am thankful for the relationship we share and the manner in which she handles her business.

JIMMY SHEETS

Party: Dem, Rep
Biographical Info:
Last Name: Sheets
First Name: Jimmy
Middle Name: Patrick
Mailing Address: 4607 Library Road, Suite 220-300 Bethel Park, PA 15102
Campaign Phone: 412-916-5995

Campaign Email: jimmysheets13@gmail.com

Campaign Web Site: <http://jimmyforjudge.com>

Facebook: Jimmy For Judge

Education: St. Vincent College Duquesne University School of Law

Qualifications for office: Twenty plus years of trial experience. Life experience. Temperament.

Q: Describe your legal experience in the Civil, Criminal, Family and Orphans Division and why this experience qualifies you to be a judge?

A: My work has predominantly been in the Criminal Division as a Public Defender and private defense attorney. In Family Division my work has mostly been defending PFA actions and representing men and women as Plaintiffs in PFA actions on a pro bono basis for Neighborhood Legal Services. In the Civil Division I have done one jury trial, a non-jury trial and represented individuals in arbitration matters.

Q: Describe an important personal trait that would make you an effective judge in the Court of Common Pleas.

A: Open-mindedness. I have both professionally and personally had a myriad of experiences that have made it clear to me that in order to learn, grow, lead and effectively help others one should be dedicated to having an open mind. Thinking



JIMMY SHEETS

has been a crucial tool in a career dedicated to helping others. Personally, the ability to consider the perspective of others has allowed me see things differently which allows for re-evaluation and growth. It is imperative that a Jurist be able to decide the issue before them by considering a myriad of viewpoints.

Q: Who is your judicial role model and why?

A: Earl Warren. Brown vs. Board of Education, Miranda vs. Arizona, Gideon vs. Wainwright, Reynolds vs. Sims and Loving vs. Virginia. The Warren Court, under the leadership and guidance of Earl Warren advanced the rights of the criminally accused and disenfranchised more than any other court had or has since. When I read Gideon's Trumpet, a book based on the decision in Gideon vs. Wainwright, I knew that I wanted to work for the Public Defender's Office. I joined the Allegheny County Public Defender's Office in August of 2000 and proudly represented indigent citizens of Allegheny County until 2005. In my private practice I receive court appointed cases from all of the judges in the Criminal Division.

TIFFANY SIZEMORE

Party: Dem

Biographical Info:

Last Name: Sizemore

First Name: Tiffany

Middle Name: Elizabeth

Mailing Address: 37 Barton Drive Pittsburgh, PA 15221

Campaign Phone: 412-295-3066

Campaign Email:

votetiffanysizemore@gmail.com

Campaign Web Site: <http://votetiffanysizemore.com/>

Facebook: <https://www.facebook.com/friendsoftiffany>

District: Allegheny County; Fifth Judicial District

Education: High School: The Winchester Thurston School (1995); College: Antioch College, B.A., Education (2000); Howard University School of Law, cum laude, J.D. (2004)

Qualifications for office: Tiffany is a 16-year courtroom veteran who has spent her entire career representing individuals who have been marginalized in court systems. She spent the first ten years of her career as a public defender and is now a clinical professor working to dismantle the school-to-prison pipeline.

Q: Describe your legal experience in the Civil, Criminal, Family and Orphans Division and why this experience qualifies you to be a judge?

A: I am a native Pittsburgher who left after high school in 1995 and returned home as an experienced lawyer in 2012. Since 2013, my practice has been primarily in Juvenile Court (Family Division) representing young people who are facing charges. I developed the Youth Advocacy Clinic at Duquesne University School of Law. Our education work sometimes takes us to the Civil Division. Additionally, I have frequently represented young people who are charged in the adult system (Criminal Division) and have jury trial experience there. The courtroom experience that I have will make me a judge who is ready on Day One to preside over cases and understand and relate to those who appear before me.

Q: Describe an important personal trait that

would make you an effective judge in the Court of Common Pleas.

A: I am tenacious. I am committed to working on my own caseload, but also to working on the systemic problems that plague our local court system including: reliance on cash bail, lack of sufficient community programming, and ending the school-to-prison pipeline. Mass incarceration is the unacceptable result when we allow these problems to flourish. We cannot afford to elect judges who will turn a blind eye to these issues or refuse to work on them outside of their individual caseloads. I have spent many years doing policy and community work, and I will take those policy partners to the bench with me. I will continue the work I am already doing as opposed to hoping to start it after I take the bench. I will be ready on Day One.

Q: Who is your judicial role model and why?

A: I have many judicial role models, locally and nationally. However, one of my favorite judicial role models is Justice Sonia Sotomayor. Justice Sotomayor has consistently recognized and paid homage to ignored and marginalized people in her opinions. She is someone who, while sitting in one of the most powerful positions in the country, has not forgotten from where she came. During her confirmation hearings, Justice Sotomayor recognized the importance of diversity on the bench. She explicitly recognized that a woman of color, with the richness of her life experiences, would more often than not reach a better decision than her counterparts without those experiences. I agree with her and intend to bring the same to my work.

PATRICK A. SWEENEY

Party: Dem, Rep

Biographical Info:

Last Name: Sweeney

First Name: Patrick

Middle Name: Allen

Mailing Address: 1205 Filson Street Pittsburgh, PA 15212

Campaign Phone: 412-867-0671

Campaign Email:

patrickswweeneyforjudge@gmail.com

Campaign Web Site: <http://patrickswweeneyforjudge.com>

Facebook: <https://www.facebook.com/PatrickSweeneyforJudge/>

Education: Juris Doctor, University of Pittsburgh School of Law, 1995; Bachelor of Arts (Economics), University of Pittsburgh, 1992; Indiana Area Senior High School (Indiana, PA) 1988

Qualifications for office: 23 years as a trial attorney with the Public Defender's office; argued dozens of jury trials, hundreds of non-jury trials, ranging from Retail Theft to Homicide; argued cases in all four divisions of the court of common pleas; represent my coworkers as an officer in the United Steelworkers

Q: Describe your legal experience in the Civil, Criminal, Family and Orphans Division and why this experience qualifies you to be a judge?

A: I have represented clients in all four Divisions of the Court of Common Pleas as a Public Defender, including: PFA Violations were considered "civil contempt" hearings and heard in Civil Division; Juvenile Delinquency proceedings are heard

in Family Division, but often involve overlap with other aspects of Family Division such as Dependency, custody and CYF involvement with clients' parents and other family members. Appeals from Involuntary Mental Health commitments are heard in Orphan's Court. Most of my experience is in the Criminal Division, where I have served for over 20 years.

Q: Describe an important personal trait that would make you an effective judge in the Court of Common Pleas.

A: Patience; The overwhelming majority of our clients in the Public Defender's office are struggling with alcohol/drug abuse, mental health disorders—or both. Advocating for often difficult clients can test the patience and empathy of anyone. Exhibiting patience towards my clients builds trust, and prevents worse outcomes for the clients as their case moves through the court system. Judges must also be patient, not only with litigants, but attorneys and witnesses. If people feel they are treated fairly by a patient judge, then confidence in the justice system will be easier to maintain.

Q: Who is your judicial role model and why?

A: John Zottola. I was fortunate to have been assigned to his courtroom for several years earlier in my career, and of all the judges before which I have appeared, he was the best. His knowledge of the law, of the rules of evidence, of how to efficiently handle a very busy docket without making it seem like cases were being rushed or ignored—he handled everything with as if it were the most important case before him. He had a sense of justice and empathy that is unmatched. Everyone who appeared before him knew they were being treated with respect, and no matter what the outcome of the case, we knew that our arguments were heard and given due consideration. He was unafraid to make controversial decisions if that is what justice required.

ANDY SZEFI

Party: Dem, Rep

Biographical Info:

Last Name: Szefti

First Name: Andy

Mailing Address: 501 Austin Ave Pittsburgh, PA 15243

Campaign Phone: (412) 259-0524

Campaign Email: info@andy4judge.com

Campaign Web Site: <http://andy4judge.com/>

Facebook: <https://www.facebook.com/Andy4Judge>

Twitter: @Andy4Judge

District: Allegheny County (5th Judicial District of PA)

Education: Bachelor of Arts, University of Richmond, 1994. Juris Doctor, University of Pittsburgh School of Law, 1999.

Qualifications for office: 22 years of courtroom experience, and 9 years serving as Allegheny County's chief legal officer and director of the County Law Department, handling a complex range of cases and issues while leading a team of 45 lawyers.

Q: Describe your legal experience in the Civil, Criminal, Family and Orphans Division and why this experience qualifies you to be a judge?

A: In my 22 years as an attorney, including 9



TIFFANY SIZEMORE



PATRICK A. SWEENEY



ANDY SZEFTI

running the Allegheny Law Department, I have practiced in all divisions. Most of my practice has been in the Civil Division. I also oversee perhaps the largest family law practice in Allegheny County as well as the largest group of attorneys handling mental health commitment cases in the Orphans Division. I have never been a prosecutor or criminal defense attorney. Elections law, zoning and land use are areas within the Civil Division which will require an experienced and knowledgeable judge in the short term, and those have been three of my specialties throughout my career. My overall service as County Solicitor involving matters throughout the court system is unique in this race.

Q: Describe an important personal trait that would make you an effective judge in the Court of Common Pleas.

A: An effective judge must have the ability to identify and understand the reasons why people are in court; not just the legal issues in play, but the underlying considerations and circumstances behind those issues. A good judge can do so and do so quickly. This requires a combination of empathy and legal acumen that I have demonstrated throughout my career. Many people have one or the other, but an effective judge has both. On a daily basis as County Solicitor, I am presented with complex issues that require analysis, understanding, and real time decisions that affect every resident of this County, not just the parties to one case. That is exactly what we require of judges every day.

Q: Who is your judicial role model and why?

A: My judicial role model has always been now-retired Court of Common Pleas Judge A. Stanton Wettick. As a young lawyer, I sat for hours watching attorneys present a seemingly endless stream of motions and issues to Judge Wettick that ranged from mundane to esoterically complex. Every attorney knew that they were heard, that they were treated with respect, and that the outcome was just regardless of whether they were on the winning side. He was universally respected for both his temperament and his legal acumen. While I harbor no delusions about taking his place, I do harbor a desire to make our court system work in the fair, efficient and respected manner that Judge Wettick fostered.

BETH TARASI SINATRA

Party: Dem, Rep
Biographical Info:
Last Name: Tarasi Sinatra
First Name: Beth
Mailing Address: 1200
 Campmeeting Rd
Campaign Phone: 412-519-5404
Campaign Email: info@sinatra-judge.com
Campaign Web Site: http://www.sinatra-judge.com
Facebook: https://www.facebook.com/SinatraJudge
Twitter: https://twitter.com/tarasisinatra
District: 5th Judicial District

Education: University of Pittsburgh BA Business/ Speech Rhetoric 1982 Duquesne University Juris Doctor 1991
Qualifications for office: 30 years as a civil trial attorney, experience, AV Preeminent Rated, Best Lawyers in America, Multimillion Dollar Advocates Forum, Lawyer of Distinction,



**BETH TARASI
SINATRA**

Q: Describe your legal experience in the Civil, Criminal, Family and Orphans Division and why this experience qualifies you to be a judge?

A: I have been a trial attorney for over 30 years and practiced in every division. My 30 years of experience aligns me with the challenges presented to a judge when deciding cases that directly impact the citizens of Allegheny County Pennsylvania. I have the right combination of experience, community service, compassion, and temperament to serve as a Judge. The Judiciary has always proved itself as a savior for individual's rights and liberty. I am AV Preeminent rated by the Judges and Lawyers I practice before and with and I am in the Best Lawyers in America. These honors are the gold standard.

Q: Describe an important personal trait that would make you an effective judge in the Court of Common Pleas.

A: Patience. I possess an incredible capacity to accept or tolerate delay, trouble, or suffering without getting angry or upset. My quality of self-restraint or of not giving way to anger, even in the face of provocation. I attributed this to the way I was raised to always show mercy and compassion when dealing with others. Throughout my life as a women's basketball player at Pitt and as a female attorney, I have face discrimination. I learned that rather than getting angry I would work through the discrimination and look to make positive results. Patience is essential to be an effective judge.

Q: Who is your judicial role model and why?

A: Carol Los Mansmann (August 7, 1942 – March 9, 2002) was a United States Circuit Judge of the United States Court of Appeals for the Third Circuit and a United States District Judge of the United States District Court for the Western District of Pennsylvania. Judge Mansmann was instrumental in my decision to become an attorney. She was always kind and would take the time to counsel and guide me. When she died it was a great loss to the world and to women. Nora Barry Fischer is a Senior United States District Judge of the United States District Court for the Western District of Pennsylvania. Judge Fisher represents what every female attorney should aspire to be. She is bright, has compassion, and patient. I have learned so much from her.

ALBERT VEVERKA

Party: Dem, Rep
Biographical Info:
Last Name: Veverka
First Name: Albert
Mailing Address: 429
 Fourth Ave, Suite 1705,
 Pittsburgh, PA 15219
Campaign Phone: 412-400-2714
Campaign Email: info@voteveverka.com
Campaign Web Site: http://voteveverka.com
Facebook: https://www.facebook.com/VoteVeverka
Twitter: https://twitter.com/voteveverka
District: Allegheny County

Education: Mt. Lebanon High School Mercyhurst College, B.A. Political Science West Virginia University College of Law, J.D.
Qualifications for office: Internship, Senator Boxer; Summer Clerkship, Justice Baer; Summer



ALBERT VEVERKA

Associate, Jubelirer, Pass and Intrieri; Law Clerk, President Judge Emery; Assistant District Attorney, Allegheny County; Shareholder, Dickie, McCamey and Chilcote; Pennsylvania Supreme Court Rules of Evidence Committee

Q: Describe your legal experience in the Civil, Criminal, Family and Orphans Division and why this experience qualifies you to be a judge?

A: I was a law clerk in the Civil and Orphans' Court Divisions. Served as an Assistant District Attorney prosecuting physical and sexual abuse cases. Currently, as a shareholder at Dickie, McCamey & Chilcote, I practice criminal and civil defense with Bob Del Greco. I have represented victims and defendants in PFA hearings, as well as juveniles in criminal matters in the Family Division. Additionally, my firm's representation of the largest healthcare provider in the region has afforded me the opportunity to practice in the Orphans Division in cases involving will contests and guardianships.

Q: Describe an important personal trait that would make you an effective judge in the Court of Common Pleas.

A: An important personal trait for an effective judge is the ability to listen and acknowledge that you do not understand or know everything about a situation. The most effective judges patiently listen to both sides, and give everybody an opportunity to be heard. Oftentimes, matters are resolved in Court because the parties simply want somebody to listen to them and suggest a resolution that might be beneficial to both parties. Once each side has had a full opportunity to express their arguments, the judge oftentimes can work out a resolution.

Q: Who is your judicial role model and why?

A: My judicial role model is the Honorable Robert C. Gallo. Judge Gallo served Allegheny County for more than 25 years, earning the nickname "The People's Judge." Judge Gallo was consistently respectful of all parties who came before him, and never lost his humility. Judge Gallo was a regular man who did not attend law school, yet rose to be one of the most respected jurists in not only Allegheny County, but the Commonwealth of Pennsylvania. Known for his calm demeanor and quick wit, Judge Gallo could always defuse a situation. As a candidate for the Court of Common Pleas of Allegheny County, it is my goal to strive to create such an environment, should I be fortunate enough to have my own courtroom.

CHELSEA WAGNER

Party: Dem, Rep
Biographical Info:
Last Name: Wagner
First Name: Chelsea
Mailing Address: PO Box
 3347 Pittsburgh, PA 15230
Campaign Phone: 412.345.3329
Campaign Email: info@electchelsea.com

Campaign Web Site: http://www.electchelsea.com/
Facebook: https://www.facebook.com/ChelseaWagnerforJudge
Twitter: https://twitter.com/ElectChelsea

District: Allegheny County
Education: The University of Chicago, BA (Public Policy Studies) The University of Pittsburgh School of Law, JD (Certificate in Civil Litigation)



CHELSEA WAGNER

University of Virginia Darden Political Leaders Certificate Program CMU Women's Leadership and Negotiation Academy Certificate Program
 Qualifications for office: Attorney for 16 years; public interest and advocacy focus; private practice areas have spanned litigation, employment law, immigration & business transactions. Allegheny County Controller; Pennsylvania State Legislator (House Judiciary Cmte) Fmr. Business Analyst for state and municipal policy

Q: Describe your legal experience in the Civil, Criminal, Family and Orphans Division and why this experience qualifies you to be a judge?

A: I have been an attorney for sixteen years, starting as a plaintiff's attorney. However, as an elected official, my foremost focus has been with matters of public interest and advocacy, though I have maintained some private legal practice over the years. In these roles, I have had experience across the civil, criminal and family divisions. I've been a leader on the most pressing advocacy and reform efforts, including healthcare access, environmental justice, reforms within the Allegheny County Jail and efforts to reform fines and fees. My legal ability, independence, leadership, government understanding, advanced administrative capability, and devotion to the improvement of the quality of justice, are crucial qualities for this role.

Q: Describe an important personal trait that would make you an effective judge in the Court of Common Pleas.

A: Principled, tested and audacious leadership. Nothing is a better predictor of how one will perform in any public office than how she has responded to challenges and adversity in life. I have demonstrated personally and professionally that I am steadfast in conducting myself with integrity, courage and tenacity. I've always been willing to speak truth to power, but also thereafter to do the more difficult work to implement reform. The role of a judge is two-fold: first is the adhering to the highest standards within her own courtroom; yet second, and often overlooked is that she must lead within our system of justice and be a true steward of our democracy. The present times desperately call for that very leadership from our judges.

Q: Who is your judicial role model and why?

A: As with role models generally, I have a number of judicial role models. The common thread among each was their legal acuity combined with courage and foresight, and collective contributions to the larger body of civil rights laws. Most notable among them are Supreme Court Justices Thurgood Marshall, Ruth Bader Ginsburg and Louis Brandeis. I would also point to important contributions made by individuals who came to the bench from roles in public office, such as Justices Frank Murphy and Earl Warren.

WRENNA WATSON

Party: Dem, Rep
No Response

ILAN ZUR

Party: Dem, Rep
Biographical Info:

Last Name: Zur

First Name: Ilan

Mailing Address: 5830 Solway St Pittsburgh, PA 15217

Campaign Phone: (412) 600-1242

Campaign Email: zur4judge@gmail.com

Campaign Web Site: <http://www.zur4judge.com>

Facebook: <https://www.facebook.com/Zur4Judge>

Twitter: @zur4judge

District: Allegheny County

Education: B.S. in Industrial Management with a Minor in Architecture - Carnegie Mellon University (1994)
 Juris Doctorate - University of Pittsburgh School of Law (1998)

Qualifications for office:

Honest and impartial legal expert with 22 years experience serving our county. I keep an open mind and lead with compassion. I hope to take my public service to the next level as a judge in the juvenile division, and believe strongly in 2nd chances and rehabilitation over incarceration.

Q: Describe your legal experience in the Civil, Criminal, Family and Orphans Division and why this experience qualifies you to be a judge?

A: The general character of my practice has been criminal prosecution over the course of my 22 year career in the District Attorney's Office. I've prosecuted a wide range of criminal offenses before approximately 50 different judges, primarily homicides and violent crimes committed with a firearm. I've seen the pipeline from the inside, which is why I'm motivated to serve as a judge in the juvenile division of the Court of Common Pleas. I believe we can do more and do better to help divert young people from prison. I believe strongly in second chances and that rehabilitation should often be considered before incarceration. The knowledge and experience I've gained these past two decades has prepared me well to serve as a judge.

Q: Describe an important personal trait that would make you an effective judge in the Court of Common Pleas.

A: Experience in objectivity. Many people think the role of a prosecutor is to put people in jail. In fact, a prosecutor is tasked with one thing: do justice. What that means exactly is a little more complicated, but in my practice it starts with objectivity and following the golden rule of doing right by people. Sometimes doing what's right as a prosecutor means withdrawing charges, or seeking mental health or drug treatment at sentencing instead of incarceration. Other times it means keeping a violent criminal off the street, as commonly was the case in the roughly 100 homicides I've prosecuted throughout my 22 year career. The only way to hone that objectivity is through experience.

Q: Who is your judicial role model and why?

A: Judge Edward Borkowski, currently serving in our Court of Common Pleas, is my judicial role model. He's someone I've admired and respected since I was a young attorney working under him at the DA's Office. He goes above and beyond to serve our county. On top of having the same case load as other judges, he has the added responsibilities of handling all ARD cases, motions court, and teaching a class at Pitt Law School. I've done my best to emulate Borkowski throughout my career-accepting speciality cases on top of my normal allotment, and taking my role as a teacher seriously as the supervisor of my unit, which has allowed me to help shape the internal culture at the DA's Office and develop the next generation of attorneys in our county.



ILAN ZUR

ALLEGHENY COUNTY SHERIFF

(Vote for one)

The Sheriff as an officer of the court serves writs, warrants, summons and other judicial documents, impanels jurors, executes sheriff's sales and carries out orders of the county court.

Term: 4 years

Salary: \$110,372

DEMOCRATIC

KEVIN KRAUS

Party: Dem

Biographical Info:

Last Name: Kraus

First Name: Kevin

Middle Name: Matthew

Mailing Address: 156

Berkshire Court Pittsburgh, PA 15237

Campaign Phone: 412-589-0573

Campaign Email:

kevinkrausforsheriff@gmail.com

Campaign Web Site: <http://www.krausforsheriff.com>

Facebook: @kevinkrausforsheriff

Twitter: N/A

District: N/A

Education: Proud alumni of La Roche College, where I graduated summa cum laude with a bachelor's degree in Criminal Justice and a degree in Administration and Management. I also am a graduate of the F.B.I. National Academy and completed police executive training at the JFK School of Government by Harvard.
Qualifications for office: 21-year veteran of the Pittsburgh Police, thru the ranks of Detective, Sergeant and Lieutenant. For 12 years, served as Lieutenant of Major Crimes, Investigations Branch. Also was Zone 5 Station Commander for a year. For the last 7 years, currently serving as Chief Deputy of ACSO, second in command.

Q: What elements of your education, training and work experience qualify you to be Sheriff? Why are you the best candidate for Sheriff?

A: I've been in law enforcement for the last 28 consecutive years, working hard every day during these challenging times and continuously evolving with policing to best serve our community. I have gained the experience and knowledge to form a vision moving forward to do my part as Sheriff to work collectively with stakeholders to solve issues. I am the best candidate because I am committed to being an equitable Sheriff to all the citizens of Allegheny County and I want to continue serving and protecting every citizen regardless of background, race, ethnicity, gender or religion.

Q: What are the most pressing issues in the Sheriff's office and how would you resolve them?

A: As Sheriff, the most pressing issues to me are transparency, personnel accountability, hiring, training and green initiatives. We have secured monies in our budget to enhance our current transparency with an In-Car Camera Initiative. I also secured capital monies to create an early warning system to ensure personnel are held accountable, identify potential issues and further enhance transparency. I also want to hire the right people and better our hiring processes with additional pre-employment screening using a panel of physicians to obtain a collective decision on candidates. Lastly, I



KEVIN KRAUS

would also like to increase training requirements and opportunities and also invest in green initiatives with technology and green vehicles.

DOM COSTA
Party: Dem
No Response

REPUBLICAN

No Candidate Filed

ALLEGHENY COUNTY COUNCIL DISTRICT 1

(Vote for one)

Initiates and adopts ordinances, makes appropriations, adopts annual balanced budget, adopts an administrative code, approves Executive appointments, conducts investigations of County Departments, accepts grants, gifts or donations on behalf of County, may modify or eliminate departments, agencies or functions that no longer serve citizens.

Term of Office: 4 years

Stipend: \$10,940

DEMOCRATIC

JACK BETKOWSKI
Party: Dem
No Response

REPUBLICAN

JOE WISE
Party: Rep
No Response

ALLEGHENY COUNTY COUNCIL DISTRICT 3

(Vote for one)

Initiates and adopts ordinances, makes appropriations, adopts annual balanced budget, adopts an administrative code, approves Executive appointments, conducts investigations of County Departments, accepts grants, gifts or donations on behalf of County, may modify or eliminate departments, agencies or functions that no longer serve citizens.

Term of Office: 4 years

Stipend: \$10,940

DEMOCRATIC

ANITA PRIZIO

Party: Dem
Biographical Info:
Last Name: Prizio
First Name: Anita
Mailing Address: 117 W. Marshall Dr. Pittsburgh PA 15215
District: County Council District 3
Education: 1969-1981 Winchester-Thurston School; 1981-1985 Bucknell University (B.A. Political Science-German); 1989 MBA University of Pittsburgh; 1999 JD University of Pittsburgh (Active Member of the PA Bar 83695)
Qualifications for office: Allegheny County Councilmember 2018--O'Hara Township Councilmember 1998-2006 Work Experience: 1989-2019: Pittsburgh Crankshaft Service, Inc.-Owner. An internal engine parts warehouse, a family business

founded by my parents, both European immigrants. Current Steel Valley Auth. (Outreach Specialist)
Q: Many municipalities in Allegheny County struggle to pay for their government. What can you do as a member of Council to make them more economically viable?

A: As a former council member of O'Hara Township, I recall public works and public safety as two departments that commanded a large portion of our budget. Voluntary consolidation of police departments may ease some of these budgetary challenges as well as cooperative agreements between communities regarding road maintenance and equipment, however, the most dramatic cost savings would result from true consolidation. Such a move would require state approval. Authority for Improvements in Municipalities (AIM) provides low interest loans to municipalities to finance capital needs. However, grants for multi-municipal projects should be increased to encourage efficiencies.

Q: What policies will you pursue to promote social and racial justice for all citizens?

A: COVID has laid bare the social and racial inequities prevalent in Allegheny County. As a Council, we are seeking to address these issues through ordinances. I have worked and will continue to make sure that Allegheny County works for everyone, not just for a privileged few. I am proud of my track record on social and racial justice, but we must continue to address the fact that the County's most marginalized populations live in some of the most polluted areas, in food deserts, with inadequate access to reliable public transportation. By using our budgetary power, we could greatly improve this situation.

Q: What action, if any, would you support to improve air quality in Western Pennsylvania?

A: Pittsburgh recently received an F rating from the American Air Association, and is among the top 10 worst U.S. cities for air quality. Addressing this crisis is a central focus of my work on Council. I was the lead sponsor of the Clean Construction Ordinance passed by Council. This law requires all County construction projects \$2.5 million and above to use the most effective diesel particulate pollution control devices available. I am the Chair of the first-ever Committee on Sustainability and Green initiatives, created to collaborate closely with the Sustainability Manager and municipalities to offer a regional approach to our climate crisis.

REPUBLICAN

MEREDITH DOLAN
Party: Rep
No Response

ALLEGHENY COUNTY COUNCIL DISTRICT 4

(Vote for one)

Initiates and adopts ordinances, makes appropriations, adopts annual balanced budget, adopts an administrative code, approves Executive appointments, conducts investigations of County Departments, accepts grants, gifts or donations on behalf of County, may modify or eliminate departments, agencies or functions that no longer serve citizens.

Term of Office: 4 years

Stipend: \$10,940

DEMOCRATIC

PATRICK J. CATENA
Party: Dem
No Response

REPUBLICAN

No Candidate Filed

ALLEGHENY COUNTY COUNCIL DISTRICT 8

(Vote for one)

Initiates and adopts ordinances, makes appropriations, adopts annual balanced budget, adopts an administrative code, approves Executive appointments, conducts investigations of County Departments, accepts grants, gifts or donations on behalf of County, may modify or eliminate departments, agencies or functions that no longer serve citizens.

Term of Office: 4 years

Stipend: \$10,940

DEMOCRATIC

MICHELLE NACCARATI-CHAPKIS

Party: Dem
Biographical Info:
Last Name: Naccarati-Chapkis
First Name: Michelle
Mailing Address: 839 Justine Drive Pittsburgh, PA 15239
Campaign Phone: 412-737-6868

Campaign Email: mchapkis839@gmail.com
Campaign Web Site: <http://www.michelleforcountycouncil.com>

Facebook: <https://www.facebook.com/Michelleforcountycouncil>

District: County Council District 8

Education: Bachelor's Degree from the University of Pittsburgh

Qualifications for office: My career has been spent supporting communities to better protect public health and the environment. This includes also working with local, state and federal agencies. For the past ten years I have also served on the Plum Zoning Hearing Board & volunteered on the boro's comprehensive plan committee.

Q: Many municipalities in Allegheny County struggle to pay for their government. What can you do as a member of Council to make them more economically viable?

A: There are 130 municipalities in Allegheny County, one with a population as small as 68 people. The Councils of Government and organizations such as CONNECT and the Local Government Academy provide an array of support and resources to municipalities to help reduce costs. With the American Rescue Plan funding going directly to these municipalities and Allegheny County, Council has an opportunity to have a leadership role. It needs to provide support to municipalities, and the organizations they rely upon, to ensure funding is distributed equitably by 2024. With discussions of a large infrastructure package, Council must work closely with both state and federal elected leaders to ensure federal funds flow to the communities in greatest need.

Q: What policies will you pursue to promote social and racial justice for all citizens?

A: I will use my knowledge of social determinants of health (such as affordable and safe housing, quality education, transportation, health care, and clean air



MICHELLE NACCARATI-CHAPKIS

and water) to advance priorities across the county that strive toward a healthier, more equitable and more prosperous region for all residents. The pandemic has demonstrated issues of inequality across the county. In response, the Black Equity Coalition was formed to focus on the disproportionate impact on the health, well-being, and economic stability of communities of color. This is an opportunity for Council to learn from the Coalition and respond to its recommended policies. Lastly, a civilian police review board is critical at the county level, given the number of municipalities.

Q: What action, if any, would you support to improve air quality in Western Pennsylvania?

A: There are many industrial sources contributing to poor air quality, resulting in an increase in cancer and asthma rates and a lack of economic growth. We have an opportunity to enforce stricter emission regulations to ensure these corporations invest in their facilities, upgrade outdated equipment, and use best available technologies so that hazardous air pollutants are no longer released and impact the community's health. Reducing emissions from the transit sector, addressing petrochemical development, and creating a comprehensive plan to address climate change will also improve our air. An investment in workforce development, including working with the Community College of Allegheny County, could be a roadmap for renewable energy jobs.

REPUBLICAN

ERIC P. CASTEEL

Party: Rep
No Response

ALLEGHENY COUNTY COUNCIL DISTRICT 9

(Vote for one)

Initiates and adopts ordinances, makes appropriations, adopts annual balanced budget, adopts an administrative code, approves Executive appointments, conducts investigations of County Departments, accepts grants, gifts or donations on behalf of County, may modify or eliminate departments, agencies or functions that no longer serve citizens.

Term of Office: 4 years **Stipend:** \$10,940

DEMOCRATIC

BOB MACEY

Party: Dem
No Response

STEVEN SINGER

Party: Dem
No Response
Republican

REPUBLICAN

No Candidate Filed

ALLEGHENY COUNTY COUNCIL DISTRICT 12

(Vote for one in your district)

Initiates and adopts ordinances, makes appropriations, adopts annual balanced budget, adopts an administrative code, approves Executive appointments,

conducts investigations of County Departments, accepts grants, gifts or donations on behalf of County, may modify or eliminate departments, agencies or functions that no longer serve citizens.

Term of Office: 4 years **Stipend:** \$10,940

DEMOCRATIC

ROBERT PALMOSINA

Party: Dem
No Response

REPUBLICAN

No Candidate Filed

MAYOR, CITY OF PITTSBURGH

The executive, administrative and law enforcement powers of the city are vested in the mayor. The mayor shall control and be accountable for the executive branch of city government.

Term of Office: 4 years **Salary:** \$117,502

DEMOCRATIC

(Vote for one)
TONY MORENO

Party: Dem
Biographical Info:
Last Name: MORENO
First Name: Tony
Mailing Address: PO Box 99493 Pittsburgh PA 15233
Campaign Phone: (412) 251-4018

Campaign Email: realsteelmayor@gmail.com
Campaign Web Site: http://realsteelmayor.com

Facebook: Tony MorenoforPittsburgh Mayor

District: 1 Northside

Education: some college credits

Qualifications for office: 24 years of Public service in The City of Pittsburgh

Questions:

Q: What is your record of accomplishment in Affordable Housing and what are your plans for the future?

A: My plans for the future would be to target existing abandoned buildings and homes, rehab them, and make them available to people currently awaiting housing. I would utilize the local workforce with specific job training to rehab existing buildings. This would be done under the blue-collar trades training programs I have plans for. I would utilize community input for housing needs with regard to who to make the specific properties available.

Q: What policy changes would you recommend to improve police accountability?

A: Annual evaluations upward as well as down the chain of command would be set up. Meaning, the patrol officer would evaluate their sergeants to hold them accountable for their treatment of the officers. Sergeants would evaluate their Lieutenant, in the same manner, the patrol officer would evaluate their Sergeant. This will hold everyone accountable and likely eliminate discrimination and corruption inside of the leadership structure. Leadership training would be prioritized over promotion. Selection for promotion would be based on the individual's body of work, not nepotism or favoritism. The complaint process has shown the police department is failing and lacking

in accountability and approval by the citizens of Pittsburgh.

Q: What kinds of strategies would you pursue to address the multiple and interconnected challenges of climate change, social, environmental and economic justice?

A: I would increase the forestry department as well as environmental services to enact the plans I have for improved air and water quality. I have a comprehensive plan for job opportunities and training for underserved communities. The start is with drivers licenses (to include driver's training). The ability to drive legally is imperative for opportunities in many fields or trades.

MICHAEL THOMPSON

Party: Dem

Biographical Info:

Last Name: Thompson

First Name: Michael

Middle Name: Watson

Mailing Address: 3206

Niagara Street Apt. 603

Campaign Phone:

4124238755

Campaign Email:

Mikethompsonformayor@gmail.com

Campaign Web Site: http://

Mikethompsonformayor.com

Facebook: https://www.facebook.com/pg/

mikethompsonformayor

Twitter: https://mobile.twitter.com/

MikeThompsonPgh

District: City of Pittsburgh

Education: Brown University, class of 2007

Qualifications for office: Not a politician who takes money from developers who gentrify our city to death. No bribes accepted. They call them campaign donations but those are bribes from developers. Once in office they give out tax breaks to the rich. Those are bribes given out to developers. For the people by the people.

Questions:

Q: What is your record of accomplishment in Affordable Housing and what are your plans for the future?

A: I live in public housing. I advocate for and support my neighbors and friends, who are also public housing residents. I have fought to have our voices heard. We tried to get a tenant council approved but were shut down by the Bill Peduto administration. We need a tenant council in every public housing complex. Bill Peduto's Housing Authority of the City of Pittsburgh needs new employees who actually care, not people who are just there for a paycheck. Tenants regularly get evicted for being behind on rent and are offered no help, only threats of eviction and then eviction. Money and assistance needs to be offered to public housing residents who fall behind. We need a social worker and a new organization to help those in need.

Q: What policy changes would you recommend to improve police accountability?

A: We need to disband the police union. We need a non-unionized police force. We need to fire the bad police officers and keep them fired. Act 111 means we are powerless to the police union. Fired officers regularly get their jobs back courtesy of the police union. The only way around Act 111 is to get rid of the police union. During the next mayoral term, the contract with the police union is up. I see no reason to renew it. To get real police reform, we must get rid of the police union. With the police union gone, we can completely redo how we respond to emergency calls. When you call 911, a professional will show up to help you, that I



MICHAEL THOMPSON



TONY MORENO

guarantee. When people are in mental distress, we will send a social worker not the police.

Q: What kinds of strategies would you pursue to address the multiple and interconnected challenges of climate change, social, environmental and economic justice?

A: We need more community groups in our underserved communities. We need social workers to reach out and organize these communities, much like Obama did in Chicago. I live in an overlooked community, South Oakland. A social worker from the Oakland Planning and Development Corporation organized the neighborhood and helped us create our local community group, the South Oakland Neighborhood Group. This is a good model for how to create stronger communities in underserved neighborhoods and something we can and should replicate. Stronger communities have more resilience and a greater ability to overcome the challenges of climate change. We in the government need to more active listening and to be more open to new ideas.

WILLIAM PEDUTO

Party: Dem

Biographical Info:

Last Name: Peduto

First Name: Bill

Mailing Address: PO Box 9161, Pittsburgh, PA 15224

Campaign Phone: 412-294-8683

Campaign Email: info@billpeduto.com

Campaign Web Site: http://www.billpeduto.com

Facebook: www.facebook.com/pedutoforpittsburgh

Twitter: www.twitter.com/billpeduto

District: City of Pittsburgh

Education: Pennsylvania State University, BA, Political Science University of Pittsburgh, MPA, Public Policy & Management

Qualifications for office: Current Mayor of Pittsburgh, Former City Councilmember; Former City Council Staffer, Created Pittsburgh Climate Action Plan Versions 1.0, 2.0, 3.0; Sponsored Fracking Ban

Questions:

Q: What is your record of accomplishment in Affordable Housing and what are your plans for the future?

A: I have started numerous programs to make Pittsburgh more affordable. I created a \$120 million affordable housing trust fund, called the Housing Opportunity Fund. It provides rental assistance as well as investment for the creation of more affordable housing in Pittsburgh. I also created the Land Bank, which puts vacant land and homes into the hands of people who need them. Furthermore, I started OwnPGH, a \$26 million program that makes it easier for people to buy and rehab homes. I believe that home ownership is the way to increasing wealth in the Black community. Additionally, have been awarded a record number of 9% Low Income Tax Credits, which makes it easier to construct affordable housing. We are attacking affordability head on.

Q: What policy changes would you recommend to improve police accountability?

A: During my administration, making the Bureau of Police more accountable has been a top priority. We have mandated the use of body cameras, use of force complaints and lawsuits against the department are at an all time low. Despite this, there is a lot of work that still needs to happen. Mayors should have the power to dismiss bad officers, full stop. They can't have this power until the legislature amends Act 111, and gives

municipalities the ability to hold these officers fully accountable.

Q: What kinds of strategies would you pursue to address the multiple and interconnected challenges of climate change, social, environmental and economic justice?

A: I am going to continue to enforce our regulations to make sure that low income communities and communities of color do not have to suffer from the devastating impacts of climate injustice, and I am going to push for a just transition to move workers from fracking and into renewable energy. I sponsored Pittsburgh's fracking ban, which was the first in the world. As Mayor I reformed PWSA and instituted a plan to replace all lead service lines. Black and Brown communities bear the burden of all forms of pollution. I implemented a Climate Action Plan for the City, which included running City operations on 100% renewable sources. I also co-developed the Marshall Plan for Middle America, which is a roadmap for a just transition.

EDWARD C. GAINEY

Party: Dem

Biographical Info:

Last Name: Gainey

First Name: Ed

Mailing Address: PO Box 5208, Pittsburgh, PA 15206

Campaign Phone: 412-282-3846

Campaign Email: info@gaineyformayor.com

Campaign Web Site: http://gaineyformayor.com

Facebook: https://www.facebook.com/gaineyformayor

Twitter: https://twitter.com/gaineyformayor

District: Currently represents House District 24 in the General Assembly, Running for Mayor of the City of Pittsburgh

Education: Morgan State University Class of 1994; Peabody High School Class of 1988

Qualifications for office: Raised by a single mom in East Liberty and the first in his family to go to college, Ed has spent years fighting the inequality that too many Pittsburghers have faced for decades. In Harrisburg, he's fought to raise the minimum wage, increase transit funding, and reform our criminal justice system.

Questions:

Q: What is your record of accomplishment in Affordable Housing and what are your plans for the future?

A: As a State Representative, I've championed the development of affordable housing in my district and fought on behalf of residents facing displacement. As Mayor I will invest in housing every Pittsburgher can afford. That means: 1) using the leverage of the City's planning process to demand community benefit agreements and inclusionary contracting practices from developers rather than rubber stamping their plans, 2) deploying tools like Community Land Trusts, the Land Bank, and Inclusionary Zoning to build neighborhoods that are accessible for everyone, and 3) focusing the resources of the Housing Authority and URA on expanding affordable housing options, preventing displacement, and protecting neighborhoods from predatory development.

Q: What policy changes would you recommend to improve police accountability?

A: We need to change the way we police this city. If elected, I'm committed to real police reform that ensures that no Pittsburgher lives in fear of crime, or of the police. That means: 1) demilitarizing police equipment and training to break the "us vs them" mentality between police and community, 2) redirecting resources from militarized

gear and tactics into implementing community policing strategies, 3) establishing alternative response procedures that allow social and healthcare workers to respond non-violent and mental health emergencies instead of police, 4) fighting for use of force reform to change the rules of engagement between police and the public and make it easier to hold officers accountable when they abuse their power.

Q: What kinds of strategies would you pursue to address the multiple and interconnected challenges of climate change, social, environmental and economic justice?

A: Interconnected injustices require an intersectional response. If we attempt to address exclusion in silos, people who face multiple injustices end up falling through the cracks. Breaking through those silos requires active leadership that understands how inequalities compound for our most marginalized communities. As Mayor I'm committed to a zero-harm, zero-exclusion agenda that lifts everyone up by focusing on those who have been left furthest behind, defending their right to belong and contribute, and treating them like the assets that they are for our City. The time for simply talking about that reality is over, we need action, and we need to elevate leaders who have those lived experiences to arrive at solutions.

PITTSBURGH CITY COUNCIL DISTRICT 2

(Vote for one in your district)

Council consists of nine members elected by district by the city of Pittsburgh voters.

The legislative power is vested in the council. Council members in odd-numbered districts are elected 2 years after the even-numbered district members are elected.

Term: 4 years

Salary: \$70,108

DEMOCRATIC

JACOB WILLIAMSON

Party: Dem

Biographical Info:

Last Name: Williamson

First Name: Jacob

Mailing Address: 915

Ringgold Street

Campaign Phone: 724-504-9581

Campaign Email:

williamson@jacobpgh.com

Campaign Web Site: http://www.jacobpgh.com

Facebook: https://www.

facebook.com/JacobWilliamsonforCityCouncil

Twitter: n/a

District: n/a

Education: Gallup CliftonStrengths, 2019; Omaha, Nebraska; Certified Strengths Coach | Augustine Institute, 2018; Denver, Colorado; Master of Arts in Theology | Gannon University, 2010; Erie, Pennsylvania; Bachelor of Arts in Philosophy

Qualifications for office: For the last ten years, I have served youth, families, and people experiencing homelessness. I am a strong advocate who knows how to take charge, speak up, and make sure all voices are heard. As a political outsider, I bring fresh energy and new perspective. I will fight for our fair share.

Q: What are your top three priorities for this office?

A: Fighting for our Fair Share | City Council has allocated less than 5% of the total capital budget to District 2 since 2016. That's money that could have been used to assist seniors, invest in our kids, eliminate



WILLIAM PEDUTO



EDWARD C. GAINEY



JACOB WILLIAMSON

blight, or repair our crumbling infrastructure. I will fight for our fair share. Dignified Housing | District 2 is filled with condemned houses. I will work getting these properties rehabilitated or torn down. We must also eliminate barriers to home ownership (e.g. lower the 5% transfer tax for first time home buyers). Our Kids | If we want a flourishing city, then we must provide opportunities for children to thrive. The City of Pittsburgh has 10 recreation centers, none of which are in District 2. Our kids are missing out.

Q: What role do you see for your municipal government in interacting with Allegheny County Council?

A: The relationship between the Allegheny County Council and the Pittsburgh City Council must be strong. While the City of Pittsburgh enjoys its own Home Rule Charter giving the city enormous flexibility in enacting and enforcing law, it benefits all residents when the city and county collaborate. The City of Pittsburgh has a unique influence in the region due to it being a population, medical, financial, educational, and technological hub. The county, due to its geographical size, has larger reach and is able to help bring local municipalities together. A good example of the councils working together is encouraging and enforcing Clairton Coke Works to limit and eventually stop its pollution of our region.

Q: How would you propose addressing the water, air quality and other infrastructure concerns of your residents?

A: Fighting for our fair share of city dollars and resources is key to solving the infrastructure issues. In terms of air and water pollution, we deserve to live in a city that is free from poisonous air and contaminated water. Both have been caused by failures in the systems of relationships, of infrastructure, and of leadership, all of which disproportionately harm minority communities. It must be a high priority for a unified city government, the mayor and a unanimous city council, to pressure our county, state, and federal officials to act in lessening and ultimately stopping our neighbors from polluting our air as well as ensuring public utilities make good on their promises to get the lead out.

THERESA KAIL SMITH

Party: Dem

Biographical Info:

Last Name: Kail Smith

First Name: Theresa

Mailing Address: PO Box 25340

Campaign Phone: 7022799470

Campaign Email: info@

reelecttheresakailsmith.com

Campaign Web Site: http://

reelecttheresakailsmith.com

Facebook: https://www.facebook.

com/reelecttheresakailsmith

District: 2

Education: Some college, many trainings, and certifications

Qualifications for office: I have served on City Council since 2009 and became City Council President in 2020. Prior to my service on City Council, I volunteered for local organizations throughout Pittsburgh and District 2 for more than 30 years.

Q: What are your top three priorities for this office?

A: 1. Infrastructure 2. Continuing to address quality of life issues for our residents 3. Creating safe, clean environments and continuing stabilization and development efforts in each neighborhood in D-2

Q: What role do you see for your municipal government in interacting with Allegheny County Council?

A: I have a great relationship with my County Councilman, the County Executive, and others on Council and I fully expect to continue those relationships. It is important to



THERESA KAIL SMITH

focus on all levels of government because they all affect the City of Pittsburgh. In District 2, we work closely with our County Councilman on road reconstruction and social services.

Q: How would you propose addressing the water, air quality and other infrastructure concerns of your residents?

A: During my time on Council, I held the first post-agendas and public hearings on the quality of water in the City of Pittsburgh. This directly led to the replacement of thousands of lead lines throughout the city. PWSA now claims Pittsburgh has the best quality of water in decades. While there is still work to do, I am working with PWSA and the Peduto Administration to encourage PWSA to offer payment plans to residents and small businesses who need to have infrastructure work done on their water lines or tap-in fees, which are costly. In terms of air quality, I am working to protect the tree canopy in District 2.

REPUBLICAN

No Candidate Filed

PITTSBURGH CITY COUNCIL DISTRICT 4

(Vote for one in your district)

Council consists of nine members elected by district by the city of Pittsburgh voters. The legislative power is vested in the council. Council members in odd-numbered districts are elected 2 years after the even-numbered district members are elected.

Term: 4 years

Salary: \$70,108

DEMOCRATIC

ANTHONY COGHILL

Party: Dem

Biographical Info:

Last Name: Coghill

First Name: Anthony

Mailing Address: 2414 Wenzell

Avenue Pittsburgh, PA 15216

Campaign Email:

coghilldistrict4@gmail.com

Campaign Web Site: http://

anthonycoghill.com/index.html

Facebook: https://

www.facebook.com/

ReElectAnthonyCoghill

District: Pittsburgh City Council District 4

Education: Brashear High School

Qualifications for office: I have been involved in public service since 2005 when I began working for State Senator Wayne Fontana and since then have become Chair of the 19th Ward of the Allegheny County Democratic Party. I have also been hard at work the last three years as the current City Councilmember.

Q: What are your top three priorities for this office?

A: • Continue re investing in our public works department by right sizing the fleet and making sure that our employees have the right equipment they need to do their jobs. • Creating economic opportunities for all residents is another top priority for me. By focusing on supporting and promoting small businesses we foster economic growth that benefits the community with thriving business districts and small businesses owned by neighborhood residents. • I will also continue advocating for and improving our parks. I led the fight against the disastrous Parks Tax and made sure this money would stay in the control of taxpayers. I have also made countless improvements to our parks by steering investment into facilities and equipment.

Q: What role do you see for your municipal



ANTHONY COGHILL

government in interacting with Allegheny County Council?

A: I see the role between the City of Pittsburgh and Allegheny County Council as one of cooperation. I have a great relationship with Councilman Palmosina and have been able to work cooperatively with him anytime I've needed assistance. I have said before that I am always willing to work with anyone who wants to help improve District 4 and I mean that.

Q: How would you propose addressing the water, air quality and other infrastructure concerns of your residents?

A: I've been working hard to address these concerns and because of the partnerships I have formed the infrastructure needs in the district have been getting addressed in ways that didn't happen under the previous Councilperson. I intend to keep fostering these partnerships with other elected officials as well because many of these problems cannot be solved by a single individual, but by bringing together of team of people willing to work towards solving complicated issues. By partnering with our State and Regional leaders we can identify sources of funding and enforcement that will continue to see improvements in our regions water and air quality.

BETHANI CAMERON

Party: Dem

Biographical Info:

Last Name: Cameron

First Name: Bethani

Middle Name: Hope

Mailing Address: 407 Merritt

Avenue, Pittsburgh, PA 15227

Campaign Phone: 412-719-6155

Campaign Email:

bethaniforcitycouncil@gmail.com

Campaign Web Site: http://

www.bethaniforcitycouncil.com

Facebook: https://www.facebook.com/

bethaniforcitycouncil.com

Twitter: https://www.twitter.com/bethanicameron

District: 4

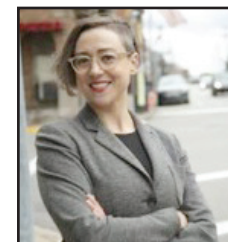
Education: I completed some college at Pitt and at the University of Salamanca in Spain. I have studied process engineering, English writing, Spanish language and culture, and I have been managing teams of people for two decades (school didn't stick, work is what I love!).

Qualifications for office: I have worked in and around Pittsburgh City Council since 2014, I am familiar with the ins and outs, the rules, and the work-arounds. I would be thrilled to fight for families and to make our city livable for everyone, not just wealthy tech folks!

Q: What are your top three priorities for this office?

A: 1. Get more service from the city for South Pittsburgh (roads plowed and salted, overgrowth cut), which also means solving a personnel issue in that department that has been long ignored. 2. Make the public safer AND stop forcing police officers to do drug treatment counseling that they didn't sign up to do by engaging with local schools and the mental health community to effectively solve the root of these issues and stop just treating the symptoms an being surprised when we get the same unacceptable results. 3. Tackle waste in the city by deep-diving into the city budget and interrogating future budgets to squeeze everything we can out of our tax dollars. Alongside this, using that to support families and Black and brown Pittsburghers.

Q: What role do you see for your municipal



BETHANI CAMERON

government in interacting with Allegheny County Council?

A: Due to the exceptional damage caused by air pollution, and the state law which dictates public health is managed by the county, the city needs to step up and engage with the county, the health department, and the County Council to strengthen pollution standard allowances and to have a prominent role in anything County Council has to pass which impacts the City of Pittsburgh.

Q: How would you propose addressing the water, air quality and other infrastructure concerns of your residents?

A: Move city from reactive to proactive. Build green infrastructure to absorb water, hold it, slowly release it to prevent flooding. Air quality will improve if we restrict the movement of diesel vehicles which add to our air pollution burden. The smoke generated is called particulate matter 2.5 (PM 2.5), which is so tiny that it penetrates lung tissue, and is of course, carcinogenic. Bad city management means we all get less, but South Pittsburgh has been begging for scraps, and lagging in infrastructure is dangerous here. Landslides, car crashes in bad weather, and the increasing amount of precipitation we get every year will only make these problems more devastating. We are going to have to push to get ahead of these problems!

REPUBLICAN

No Candidate Filed

PITTSBURGH CITY COUNCIL DISTRICT 6

(Vote for one in your district)

Council consists of nine members elected by district by the city of Pittsburgh voters. The legislative power is vested in the council. Council members in odd-numbered districts are elected 2 years after the even-numbered district members are elected.

Term: 4 years

Salary: \$70,108

DEMOCRATIC

ROBERT DANIEL LAVELLE

Party: Dem

No Response

REPUBLICAN

No Candidate Filed

PITTSBURGH CITY COUNCIL DISTRICT 8

(Vote for one in your district)

Council consists of nine members elected by district by the city of Pittsburgh voters. The legislative power is vested in the council. Council members in odd-numbered districts are elected 2 years after the even-numbered district members are elected.

Term: 4 years

Salary: \$70,108

DEMOCRATIC

ERIKA STRASSBURGER

Party: Dem

Biographical Info:

Last Name: Strassburger

First Name: Erika

Mailing Address: 1533 Valmont St, Pittsburgh PA 15217

Campaign Phone: 412-721-6564

Campaign Email: info@voteerika.com

Campaign Web Site: <http://voteerika.com>

Facebook: <https://www.facebook.com/erikaforcouncil>

Twitter: <https://twitter.com/erikastrassbrgr>

District: 8

Education: Bucknell University, degrees in Environmental Studies and International Relations

Qualifications for office:

Environment advocate for 9+ years w/ Penn Environment and New Hampshire Environment Former Chief of Staff to Councilperson Gilman 2 years as District 8 Councilperson Vice-Chair of PWSA

Q: What are your top three priorities for this office?

A: It is my responsibility in part to help restore public trust by creating an office where constituents can voice their opinions, hear from their Council Member regularly, and can trust her words while feeling seen and respected. I aim to set an example for other City officials to become more transparent. Second, I will fight for a future of policies and inclusive job opportunities in our region that contribute to healthy air and water with fair wages for workers. Third, I will continue passing legislation and advocating at other levels of government to ensure everyone is treated equally.

Q: What role do you see for your municipal government in interacting with Allegheny County Council?

A: I will focus on environmental justice, improving our public schools, and ensuring our economy works for everyone. Our most marginalized communities are victims of gross environmental mistreatment by big corporations. We need legislation and enforcement to improve water and air quality no matter your zip code. Our public schools show clear opportunity gaps for children of color and of low income—Council needs to work with the School Board to share resources in order to create a more just educational system. Finally, I plan to provide uplift small businesses owned by women, LGBT+ and BIPOC folk.

Q: How would you propose addressing the water, air quality and other infrastructure concerns of your residents?

A: We need to focus more on underlying causes of crime and violence as opposed to the symptoms. In part, this can be accomplished by creating alternatives to policing such as training other first responders to respond to matters involving drug addiction, mental health emergencies, and more. All in all, we need a shift away from policing as we know it altogether. To do this, states and cities need more control over who is hired, disciplined, and fired, and what the culture of police forces prioritizes. The future version cannot take hold while police unions wield as much power as they do.

REPUBLICAN

No Candidate Filed

PITTSBURGH SCHOOL DIRECTOR DISTRICT 1

(Vote for one in your district)

School Directors are elected on behalf of the community to oversee the education of students in their jurisdiction. They serve as agents of the state legislature. They are responsible for curriculum and instruction management, all finances including development of annual budgets and levying of taxes



ERIKA STRASSBURGER

and issuance of debt obligations when necessary; personnel; legal matters; management of facilities; and transportation of students as appropriate. Schools may include pre-K and career and technical schools. The school board consists of nine members who serve four-year terms of office without pay.

Term of office: 4 years

No Salary

DEMOCRATIC

CARLOS A. THOMAS

Party: Dem

Biographical Info:

Last Name: Thomas

First Name: Carlos

Middle Name: A.

Mailing Address: 7152 Upland St.

Campaign Phone: 8148449635

Campaign Email:

carlosthomasford1@gmail.com

Campaign Web Site: <http://www.carlosthomasford1.com>

Facebook: <https://www.facebook.com/carlosathomasford1/>

Twitter: <https://twitter.com/carlostford1>

District: Pittsburgh Public Schools

Education: Le Cordon Bleu Institute of Culinary Arts Pittsburgh, PA Associate Degree in Specialized Business, Restaurant and Hospitality Management Peabody High School Pitts

Qualifications for office: Selected for Mayor's Youth Council 2005-2008 Featured in Pittsburgh Post: <https://tinyurl.com/yxgssy9> Founded "Feed the Hood" NAEF Serv-Safe Food Food Handler NAEF Cost Control Training NAEF Health and Wellness Training

Q: The pandemic has highlighted the significant disparity in educational delivery in districts from no in-person learning, to hybrid models to full time in-person sessions resulting in uneven student performance. As schools reopen, how would you propose to assess student achievement and to remedy the loss of learning for so many students?

A: We know that some of these issues have existed longer than the pandemic. I think now is the right time to really assess what education looks like from our families perspective. Being able to identify where each of our students are and finding innovative ways to meet the gaps. Food insecurity is one of those gaps and our community has been playing an active role one mending those bridges in regards to food access. Those are the same approaches I would take.

Q: Social and racial justice issues have become a concern for all school districts, many of which have instituted anti-bullying programs to help address these issues. What kinds of criteria would you propose to measure the effectiveness of these campaigns and progress toward improvement?

A: Social and racial issues have been a growing concern for our entire country. Being a black man I have unfortunately, I have had many occurrences of racial injustice and this can be a sensitive topic for me. However one thing I do know is we have to start teaching the truth about our country's past. It is no longer acceptable to skip over important historical times that hold the true identity of America, but to also propel change in our society.

Q: Pennsylvania currently allows parents to choose whether their children attend public schools, charter, or cyber-charter schools with funding provided by state and local opponents of all of these options. Where do you stand and explain your position.

A: I think school choice is very important, my only concern with school choice, especially within the district is that



CARLOS A. THOMAS

we do not have the same equality across our own district. As a school director I would work towards innovative equality in our education practices, environment and staffing needs so the issues of school choice will decrease with better quality schools that meet students where they are.

SYLVIA C. WILSON

Party: Dem, Rep

Biographical Info:

Last Name: Wilson

First Name: Sylvia

Middle Name: C.

Mailing Address: Sylvia
Wilson PO Box 4812

Campaign Phone:
412.927.6067

Campaign Email: d1@
sylviacwilson.com

Campaign Web Site: http://
sylviacwilson.com

Facebook: Re-Elect Sylvia C. Wilson@D1for2021

Twitter: @SylviaCWilson

District: 1

Education: Pittsburgh Public Schools—Peabody
Carnegie Mellon University—BA University of
Pittsburgh—Med

Qualifications for office: Retired teacher with
Pittsburgh Public Schools; in second term on
school board; participates in on-going professional
development for school directors;

**Q: The pandemic has highlighted the significant
disparity in educational delivery in districts
from no in-person learning, to hybrid models to
full time in-person sessions resulting in uneven
student performance. As schools reopen, how
would you propose to assess student achievement
and to remedy the loss of learning for so many
students?**

A: Students must be met at their level initially to
determine what they know and build upon that based
on grade level and curriculum. Then attention has
to be given to enhance and enrich their educational
experiences. More time alone doesn't do it, it's the
types of activities provided and materials used (and
with interest) and the educational rigor used which
will bring about the desired results.

**Q: Social and racial justice issues have become
a concern for all school districts, many of which
have instituted anti-bullying programs to help
address these issues. What kinds of criteria
would you propose to measure the effectiveness
of these campaigns and progress toward
improvement?**

A: Anti-bullying policies have existed in Pittsburgh
Public schools for quite some time. It is important that
the policies be applied and adhered to consistently
across the district. Incidents and/or complaints and
resulting actions must be viewed to see that district
policies are being followed. If not, then those schools
not compliant must be given additional training and
oversight.

**Q: Pennsylvania currently allows parents to
choose whether their children attend public
schools, charter, or cyber-charter schools with
funding provided by state and local opponents
of all of these options. Where do you stand and
explain your position.**

A: Public schools educate all children—they do not
get to choose which children they will teach. Charters
were to be innovative, to become infused into the
district. They have not shown the way. Charter and
cyber schools should adhere to the same guidelines as
regular comprehensive public schools. Public schools



SYLVIA C. WILSON

must disclose their finances and budget. There is no
requirement to publicly show the use of tax dollars by
charters and cyber schools. Charter schools and cyber
schools have boards, but they are not elected. They are
using public dollars, this should be publicly disclosed
as well. Quite a few charters and cyber schools are run
by profit making companies. Again, they should not be
allowed to make a profit using tax dollars.

GRACE HIGGINBOTHAM

Party: Dem

No Response

REPUBLICAN

SYLVIA C. WILSON – See Response Above

PITTSBURGH SCHOOL DIRECTOR DISTRICT 3

(Vote for one in your district)

School Directors are elected on behalf of the
community to oversee the education of students in
their jurisdiction. They serve as agents of the state
legislature. They are responsible for curriculum
and instruction management, all finances including
development of annual budgets and levying of taxes
and issuance of debt obligations when necessary;
personnel; legal matters; management of facilities; and
transportation of students as appropriate. Schools may
include pre-K and career and technical schools. The
school board consists of nine members who serve four-
year terms of office without pay.

Term of office: 4 years

No Salary

DEMOCRATIC

LAMONT FRAZIER, JR.

Party: Dem

Biographical Info:

Last Name: Frazier

First Name: Lamont

Middle Name: Warner

Mailing Address: 5161
Hillcrest St

Campaign Phone: 412-918-
6160

Campaign Email:
Lamont4schoolboard@gmail.
com

Facebook: https://

www.facebook.com/

Lamont4SchoolBoard

District: 3

Education: Multiple trade certifications, High school
diploma

Qualifications for office: As a coach and mentor with
the Garfield Gators youth sports organization for 12
years. I've experienced first hand the many challenges
that our students and families face throughout the city
and strongly believe in making the best decisions that
will impact them and their communities.

**Q: The pandemic has highlighted the significant
disparity in educational delivery in districts
from no in-person learning, to hybrid models to
full time in-person sessions resulting in uneven
student performance. As schools reopen, how
would you propose to assess student achievement
and to remedy the loss of learning for so many
students?**

A: I wouldn't penalize the students who have struggled
this year do to the fact that we don't know what issues
that they could've been dealing with at home. Did they
have access to technology or to wifi? How were they



LAMONT FRAZIER,
JR.

supported and by whom? We need to assess where
they struggled and get them in tutoring sessions to
help them catch up with their peers. I would establish
summer and after school opportunities to aid our
scholars in catching up and becoming proficient in
the areas that they were having difficulty in. I think
they could be assessed by using their current and past
grades to see where they struggled.

**Q: Social and racial justice issues have become
a concern for all school districts, many of which
have instituted anti-bullying programs to help
address these issues. What kinds of criteria
would you propose to measure the effectiveness
of these campaigns and progress toward
improvement?**

A: I would propose have diversified staff to run
these anti bullying programs. To measure progress I
would have administrators of the program document
restorative circles and monitor the behaviors of
students that were impacted by bullying. I would
encourage peer groups that are diversified so that the
scholars could learn from one another.

**Q: Pennsylvania currently allows parents to
choose whether their children attend public
schools, charter, or cyber-charter schools with
funding provided by state and local opponents
of all of these options. Where do you stand and
explain your position.**

A: I do believe that parents should have the right to
send their child to whatever school feel best fits their
needs and expectations. However I do not believe that
we need anymore charter schools being built, unless
they can secure their own funding without taking
away from public schools.

SALA UDIN

Party: Dem

No Response

REPUBLICAN

No Candidate Filed

PITTSBURGH SCHOOL DIRECTOR DISTRICT 5

(Vote for one in your district)

School Directors are elected on behalf of the
community to oversee the education of students in
their jurisdiction. They serve as agents of the state
legislature. They are responsible for curriculum
and instruction management, all finances including
development of annual budgets and levying of taxes
and issuance of debt obligations when necessary;
personnel; legal matters; management of facilities;
and transportation of students as appropriate. Schools
may include pre-K and career and technical schools.
The school board consists of nine members who serve
four-year terms of office without pay.

Term of office: 4 years

No Salary

DEMOCRATIC

TERRY KENNEDY

Party: Dem, Rep

Biographical Info:

Last Name: Kennedy

First Name: Terry

Middle Name: Ann

Mailing Address: 4335 Saline Street Pittsburgh, PA
15217

Campaign Phone: 412-576-6106

Campaign Email: FriendsOfTerryKennedy@gmail.
com

Campaign Web Site: http://www.facebook.com/

FriendsOfTerryKennedy

Facebook: <https://www.facebook.com/FriendsOfTerryKennedy>

District: Pittsburgh Public Schools, District 5

Education: 1983 Carnegie-Mellon University B.S. in Applied Mathematics, Computer Science track

Qualifications for office: 20+ years PPS volunteer involvement in early intervention, special & gifted education, magnet programs, assistive technology, & CITY Connections. Board member since 2013; 2nd VP 3 times; chair/co-chair of Policy, Business/Finance, Safety & Operations, Negotiations, & Personnel committees.

Q: The pandemic has highlighted the significant disparity in educational delivery in districts from no in-person learning, to hybrid models to full time in-person sessions resulting in uneven student performance. As schools reopen, how would you propose to assess student achievement and to remedy the loss of learning for so many students?

A: The District is continuously assessing student achievement using multiple measures. The summer BOOST program is a start to remedy learning loss and will be offered to the students most at risk for learning loss. Planning for other supports and programs is in process. Assessment of each student's needs should occur early in the 21-22 school year to determine the appropriate supports needed to help each student to overcome the loss.

Q: Social and racial justice issues have become a concern for all school districts, many of which have instituted anti-bullying programs to help address these issues. What kinds of criteria would you propose to measure the effectiveness of these campaigns and progress toward improvement?

A: I am a firm believer in restorative justice. I believe it needs to be used as the primary method to address all issues, and to help the affected students and staff to move beyond the incident(s) that prompted the use of restorative justice. Discipline data will be used to measure the effectiveness. A reduction in disciplinary actions is the expected positive outcome.

Q: Pennsylvania currently allows parents to choose whether their children attend public schools, charter, or cyber-charter schools with funding provided by state and local opponents of all of these options. Where do you stand and explain your position.

A: Parents/guardians have a right to select the best option for their children. The following reforms are needed due to the old & unfair charter school law that harms public school students. I believe funding formulas need to be fair. The rules that govern expenditures of the public schools must be equally applied to charter schools. I also believe the tuition charge to a district for a student with an IEP attending a charter school must reflect the cost of implementing the IEP. I propose a flat tuition rate charged for each student, regardless of a student's school district, with the IEP implementation cost added for each student with an IEP. Money not used by a charter school to educate a student should be returned to the school district.

TRACEY REED

Party: Dem

No Response

REPUBLICAN



TERRY KENNEDY

TERRY KENNEDY – See Response Above

PITTSBURGH SCHOOL DIRECTOR DISTRICT 7

(Vote for one in your district)

School Directors are elected on behalf of the community to oversee the education of students in their jurisdiction. They serve as agents of the state legislature. They are responsible for curriculum and instruction management, all finances including development of annual budgets and levying of taxes and issuance of debt obligations when necessary; personnel; legal matters; management of facilities; and transportation of students as appropriate. Schools may include pre-K and career and technical schools. The school board consists of nine members who serve four-year terms of office without pay.

Term of office: 4 years

No Salary

DEMOCRATIC

KHAMIL SCANTLING

Party: Dem

No Response

JAMIE PIOTROWSKI

Party: Dem

Biographical Info:

Last Name: Piotrowski

First Name: Jamie

Middle Name: Suzanne

Mailing Address: 2316

Patterson Street Pittsburgh PA, 15203

Campaign Phone: 412-853-0445

Campaign Email:

jamiespiotrowski@gmail.com

Campaign Web Site: <http://www.jamieforschoolboard.com>

Facebook: <https://www.facebook.com/Jamie4SchoolBoard>

Twitter: https://twitter.com/JamiePio_Pgh

District: 7

Education: Waynesburg University Bachelor of Arts Sociology-Family Studies University of Pittsburgh Master of Social Work University of Pittsburgh Master of International Development

Qualifications for office: Jamie is a licensed social worker in Pennsylvania and has dedicated her career to working directly with vulnerable communities helping them fight for and access valuable resources. Endorsed by State Rep Jessica Benham, Senator Wayne Fontana, the Pittsburgh Federation of Teachers, among others.

Q: The pandemic has highlighted the significant disparity in educational delivery in districts from no in-person learning, to hybrid models to full time in-person sessions resulting in uneven student performance. As schools reopen, how would you propose to assess student achievement and to remedy the loss of learning for so many students?

A: Covid-19 disproportionately impacts our Black and brown students. While students learn from home out of necessity or by choice, we must close the digital gap and ensure students have the appropriate equipment to access their classrooms and resources; as the return to in-person learning occurs, vulnerable students should be prioritized, with appropriate safety protocols in place to keep them safe from possible infection. I will advocate for a holistic learning model for our students and strengthen additional opportunities for social-emotional, and academic growth in our community schools and Summer programs.



JAMIE PIOTROWSKI

Q: Social and racial justice issues have become a concern for all school districts, many of which have instituted anti-bullying programs to help address these issues. What kinds of criteria would you propose to measure the effectiveness of these campaigns and progress toward improvement?

A: It is important that our teachers and staff are trained to recognize the signs of bullying, students have access to support services and opportunities for student-adult communication, and that we utilize an inclusive curriculum that reflects our student body and creates a learning environment of respect. We must utilize evidence based and data informed intervention materials and programs and utilize input from leading advocacy groups. These methods must also be adapted for online learning and social media usage to protect our students from bullying and harassment while online, outside of regular school hours.

Q: Pennsylvania currently allows parents to choose whether their children attend public schools, charter, or cyber-charter schools with funding provided by state and local opponents of all of these options. Where do you stand and explain your position.

A: We should focus on targeted and intentional improvements and advocate for charter reform at the state level to ensure all of our students, regardless of their learning path, have access to a high-quality, education. The state's tuition rates for cyber and special education need to be reevaluated to ensure taxpayer dollars are spent equitably and effectively. Charter schools are not held to the same standards as traditional public schools and there are not mechanisms in place to hold them accountable to communities. Charter school law must be reformed to eliminate waste, fraud, and abuse of taxpayer dollars.

PITTSBURGH SCHOOL DIRECTOR DISTRICT 9

(Vote for one in your district)

School Directors are elected on behalf of the community to oversee the education of students in their jurisdiction. They serve as agents of the state legislature. They are responsible for curriculum and instruction management, all finances including development of annual budgets and levying of taxes and issuance of debt obligations when necessary; personnel; legal matters; management of facilities; and transportation of students as appropriate. Schools may include pre-K and career and technical schools. The school board consists of nine members who serve four-year terms of office without pay.

Term of office: 4 years

No Salary

DEMOCRATIC

DELANCEY WALTON

Party: Dem

Biographical Info:

Last Name: Walton

First Name: Delancey

Mailing Address: 1250

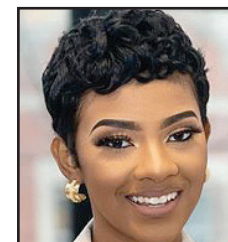
Liverpool St, Pittsburgh PA 15233

Campaign Phone: 412-626-8172

Campaign Email:

waltoncampaign2021@gmail.com

Campaign Web Site: <http://delanceyforschoolboard.org>



DELANCEY WALTON

Facebook: delanceyforpps Delancey for School Board District 9

District: District 9

Education: First year student at Duquesne University Qualifications for office: Leader—of many organization BSU, Stand Together. Community outreach Political Scientist VP—Freshman Council Employed in the Office of Alumni Engagement at Duquesne University

Q: The pandemic has highlighted the significant disparity in educational delivery in districts from no in-person learning, to hybrid models to full time in-person sessions resulting in uneven student performance. As schools reopen, how would you propose to assess student achievement and to remedy the loss of learning for so many students?

A: Assessing student achievement necessitates availability. We must make sure as parents, teachers, and administrators that we are available to provide the necessary resources to help our students succeed academically. PPS recently created programs such as B.O.O.S.T and Parents for Parents so our parents have input on their child's education and students have opportunities to augment their achievements. The programs created by PPS have to be brought to the attention of the community, so they are aware help is available throughout this transition back into schools. It will not be easy; but with the appropriate leadership, it is feasible. Additionally, as part of the federal Coronavirus Aid, Relief, and Economic (CARES) Act could provide opportunity

Q: Social and racial justice issues have become a concern for all school districts, many of which have instituted anti-bullying programs to help address these issues. What kinds of criteria would you propose to measure the effectiveness of these campaigns and progress toward improvement?

A: In order to identify and eliminate instances of social and racial injustice, I believe it is important to institute programs that will help kids overcome issues that may be caused by injustices. For example, a program like Stand Together would address mental health issues that are caused by social and racial injustices. It is important that we create a cultural atmosphere where everyone feels welcomed. It has been shown that when a students feel a part of the school community, they succeed socially and academically. It is about making our students understand what it means to accept each other, because strength lies in differences.

Q: Pennsylvania currently allows parents to choose whether their children attend public schools, charter, or cyber-charter schools with funding provided by state and local opponents of all of these options. Where do you stand and explain your position.

A: Parents have the right to send their child to the school that best fits their child's path to the future. Although, I do stand by public schooling providing high quality education for the students within the city. Educational options are vital to providing the least restrictive environment for learning; and, consequently, facilitates a competitive atmosphere to maintain a progressive level of excellence. However, recognizing the substantial financial obligations we make to charter schools, any and all laws that require parallel requirements for public school are not only relevant, they necessary to ensure there is a level playing field in educational options. Allowing charter schools spend taxpayer dollars void of oversight and consequence

GENE WALKER

Party: Dem
Biographical Info:

Last Name: Walker

First Name: Gene

Mailing Address: 1408 Termon Ave Pittsburgh, Pa 15212

Campaign Phone: 570-466-6338

Campaign Email: genewalkerfordistrict9@gmail.com

Campaign Web Site: <http://genewalkerfordistrict9.org>

Facebook: <https://www.facebook.com/GeneWalkerforDistrict9>

Twitter: <https://twitter.com/GeneWalker4PPS>

Education: PPS Grad- Peabody High School Bachelors of Science - Bloomsburg University

Q: The pandemic has highlighted the significant disparity in educational delivery in districts from no in-person learning, to hybrid models to full time in-person sessions resulting in uneven student performance. As schools reopen, how would you propose to assess student achievement and to remedy the loss of learning for so many students?

A: I believe the Superintendent and his staff must create a comprehensive plan to help students catch up on what was lost over the last year. The instruction over the last 12-18 weeks has been much improved, but it is not enough. There should be efforts to partner with afterschool and summer youth programs to integrate some learning opportunities with curriculum provided by the district that targets the students most in need. The district already has a summer school format, but I would like to see them expand their reach by going to where the students are and providing the much-needed personal instruction that is needed.

Q: Social and racial justice issues have become a concern for all school districts, many of which have instituted anti-bullying programs to help address these issues. What kinds of criteria would you propose to measure the effectiveness of these campaigns and progress toward improvement?

A: Social and racial justice continue to be an area where school districts must improve. There are initiatives that begin to address the problem such as the K-2 suspension ban and the implementation of restorative justice practices. I would look to measure the effectiveness of these and other programs by looking at the comparative data, looking at the rate of suspensions or disciplinary referrals, taking a specific look at the race, ethnic, and gender spreads for each area. Success will show reductions in all areas and a narrowing gap across the board. The district must have a comprehensive and detailed plan with trackable metrics for any plan that is introduced.

Q: Pennsylvania currently allows parents to choose whether their children attend public schools, charter, or cyber-charter schools with funding provided by state and local opponents of all of these options. Where do you stand and explain your position.

A: I fully support a parent's right and ability to find the best possible education for their child. As families leave the district in pursuit of better schools, we must look internally at how we can improve the schools within PPS. We must increase academic opportunities, address racial disparities in achievement and discipline, and increase our investment in neighborhood schools in order to bring families back to the district. In the meantime we also need to advocate for state legislation that will reform the funding formula for charter schools, especially cyber schools, to create a more equitable distribution of public tax dollars and reduce the financial strain on our district.



GENE WALKER

VERONICA M. EDWARDS

Party: Dem, Rep

Biographical Info:

Last Name: Edwards

First Name: Veronica

Middle Name: M

Mailing Address: 3774 Haven Street Pittsburgh, Pa. 15204

Campaign Phone: (412)608-5625

Campaign Email: Edwardsfordistrict9@gmail.com

Facebook: Veronica Edwards

Twitter: N/A

District: vedwards1@pghschools.org

Education: Leadership Pittsburgh XX Carlow University Gladstone High School

Qualifications for office: Currently the incumbent in District 9 First African American to Serve Led the charge to return students safely back to school during a pandemic Hosted a Community Vaccination Clinic Delivered Covid 19 Essentials to Crafton Heights and Mountain View Communities

Q: The pandemic has highlighted the significant disparity in educational delivery in districts from no in-person learning, to hybrid models to full time in-person sessions resulting in uneven student performance. As schools reopen, how would you propose to assess student achievement and to remedy the loss of learning for so many students?

A: Because we are responding to COVID-19, there are no concrete answers. The District has to use all of our resources to reach students. Public assessments and private assessments to determine where students presently stand. Educational resources to pull them up. Dedicated teachers to perform assessments and District staff to give students what they need to grow, live and learn to build quality lives. It will take teamwork to make the dream work. Let's go!

Q: Social and racial justice issues have become a concern for all school districts, many of which have instituted anti-bullying programs to help address these issues. What kinds of criteria would you propose to measure the effectiveness of these campaigns and progress toward improvement?

A: I believe anti-bullying is a bandaid. We need to address anti-racism. The minds and emotions built up in people for decades is no longer accepted by today's young people. America and our Cities are dealing with young people who refuse to be held down because of the color of their skin. They want to be educated to their fullest extent to lead quality lives. Let's deal with the real problems of today.

Q: Pennsylvania currently allows parents to choose whether their children attend public schools, charter, or cyber-charter schools with funding provided by state and local opponents of all of these options. Where do you stand and explain your position.

A: I stand on providing students opportunities to educate and grow their lives. Parents are a child's first teacher. Whatever they do and see what's best for them is alright with me!



VERONICA M. EDWARDS

REPUBLICAN

VERONICA M. EDWARDS – See Response Above

BALLOT QUESTION #1:

Pennsylvania Legislative Resolution to Extend or Terminate Emergency Declaration Amendment

Shall the Pennsylvania Constitution be amended to change existing law and increase the power of the General Assembly to unilaterally terminate or extend a disaster emergency declaration—and the powers of Commonwealth agencies to address the disaster regardless of its severity pursuant to that declaration—through passing a concurrent resolution by simple majority, thereby removing the existing check and balance of presenting a resolution to the Governor for approval or disapproval?

If you vote **YES**, you agree to give the Legislature, by a simple majority vote, the sole power to take away the Governor’s existing authority to make disaster emergency declarations.

If you vote **NO**, you disagree with giving the Legislature, by a simple majority vote, the sole power to take away the Governor’s existing authority to make disaster emergency declarations.

Background on proposed amendment: This amendment arises from the conflict between the Governor and Legislature over the Governor’s Covid-19 emergency declarations, including stay-at-home orders, school and business restrictions, etc. The Pennsylvania Supreme Court ruled that under current law, the Governor could veto the Legislature’s concurrent resolution to end the Governor’s emergency declaration. The Legislature then fell short of the two-thirds legislative vote required to overturn the veto.

Background on legislative procedure: Currently, under Article III, Section 9, all bills and concurrent resolutions by the General Assembly must be presented to the Governor for his approval or veto. If approved by the Governor, the bills or concurrent resolutions, become law. If the Governor exercises a veto, the bills or concurrent resolutions do not become law unless two-thirds of the House and Senate vote to override the Governor’s veto. The proposed amendment would create an exception to, and remove, the customary legislative procedure of a two-thirds legislative vote to override a Governor’s veto with respect to emergency disaster declarations.

Other: Only four states require a legislative vote to extend or terminate a governor’s emergency declarations (Alaska, Kansas, Michigan and Minnesota).

ARGUMENTS FOR:

- strengthens legislative power to act to end or continue an emergency declaration without the Governor having veto power
- weakens the Governor’s powers during an emergency to extend declaration
- disperses authority for creating and ending a disaster emergency declaration
- removes customary legislative procedure requiring a two-thirds legislative vote to override a Governor’s veto

ARGUMENTS AGAINST:

- reduces executive power of an individual elected by entire state to act in an emergency
- increases impact of partisan and regional influence of legislators during an emergency situation
- creates logistical and administrative hurdles for creating and ending a disaster emergency declaration
- maintains check and balance of the two-thirds legislative vote to override a Governor’s veto

BALLOT QUESTION #2:

Pennsylvania Emergency Declarations Amendment

Shall the Pennsylvania Constitution be amended to change existing law so that: a disaster emergency declaration will expire automatically after 21 days, regardless of the severity of the emergency, unless the General Assembly takes action to extend the disaster emergency; the Governor may not declare a new disaster emergency to respond to the dangers facing the Commonwealth unless the General Assembly passes a concurrent resolution; the General Assembly enacts new laws for disaster management?

If you vote **Yes**, you agree to change existing law to limit any Governor’s disaster emergency declaration—no matter the severity—to 21 days (from 90), unless, and until, the Legislature votes by a simple majority to extend the disaster emergency declaration; and take away the Governor’s authority to manage new emergency and disasters situations.

If you vote **No**, you disagree with changing the existing law that provides any Governor with the power to issue emergency declarations without a 21-day limitation or a simple majority vote by the Legislature; and any Governor retains authority to act in emergency and disaster situations.

ARGUMENTS FOR:

- grants the legislature, elected from different districts throughout the Commonwealth, the sole power to manage a disaster
- limits an emergency declaration to 21 days (from 90) unless legislature extends by a simple majority
- removes customary legislative procedural requirement of a two-thirds legislative vote to override a Governor’s disaster declaration
- provides sole authority to extend a declaration to lie with the Legislature; presently, this power rests with the Governor

ARGUMENTS AGAINST:

- creates logistical and administrative hurdles of convening a 253-member legislature, every 21 days (and in disaster conditions)
- reduces the power of the executive, elected by entire state, to act in an emergency
- increases impact of partisan and regional influence of legislators
- provides opportunities for possible delays that could worsen a disaster
- weakens ability to access federal funding and support tied to declaring emergency disasters
- promotes uncertainty of disaster timelines needed for swift responses

Background on proposed amendment: This amendment arises from the conflict between the Governor and Legislature over the Governor’s Covid-19 emergency declarations, including stay-at-home orders, school and business restrictions, etc. The Pennsylvania Supreme Court ruled that under current law, the Governor could veto the Legislature’s concurrent resolution to end the Governor’s emergency declaration. The Legislature then fell short of the two-thirds legislative vote required to overturn the veto. Current law sets an emergency declaration at 90 days and gives the Governor to act on, and manage, emergencies and disasters. The Legislature does have the ability to end the Governor’s emergency declarations with a two-thirds legislative vote to override a Governor’s veto.

Other: Only four states require a legislative vote to extend or terminate a governor’s emergency declarations (Alaska, Kansas, Michigan and Minnesota).

BALLOT QUESTION #3:

Pennsylvania Equal Rights Regardless of Race or Ethnicity Amendment

Shall the Pennsylvania Constitution be amended by adding a new section providing that equality of rights under the law shall not be denied or abridged because of an individual's race or ethnicity?

If you vote **Yes**, you agree that all Pennsylvania state, county, and local governmental agencies and institutions cannot restrict or deny an individual's equal rights under Pennsylvania law because of race or ethnicity.

If you vote **No**, you disagree with changing the Pennsylvania Constitution because the Equal Protection Clause of the US Constitution and federal law currently provides broader protections against denying or restricting rights on the basis of race and ethnicity.

ARGUMENTS FOR:

- eliminates preferential treatment to individuals based on race and ethnicity
- promotes states' rights—independent of the US Constitution and federal laws
- allows individuals to not be discriminated against due to their race or ethnicity by Pennsylvania agencies and organizations
- prohibits future legislation that is inconsistent with this Pennsylvania law on protecting individual rights

Background: Ballot measures such as this have led to state bans in California, Washington and Michigan, on racial and ethnic considerations in the operation of public employment, education, or contracting. While the language of the PA amendment does not outright ban racial and ethnic considerations, the emphasis on an individuals' rights lays the groundwork to eliminate race and ethnic-conscious considerations in hiring, admissions, contracting, and other opportunities. By not considering a race and ethnic group, many under-represented groups could further be denied opportunities that historically have been denied to them. For instance, in California, admissions by under-represented in state-run universities decreased by upwards of 60% after the universities no longer considered race in the admissions process.

Even if the change in law results in prohibitions of racial considerations by state agencies, the new PA law will likely be upheld because it was a change voted on by PA voters. In 2014, the U.S. Supreme Court upheld a Michigan ballot initiative which resulted in a ban on race considerations in state-run schools because the case was not about the merits of race-conscious policies. Rather, as Justice Kennedy stressed in the controlling opinion, it is about "whether, and in what manner, voters in the States may choose to prohibit the consideration of racial preferences in governmental decisions..." Thus, if this ballot question were to pass, any resulting ban on racial and ethnic considerations by PA agencies and operations, would likely stand.

ARGUMENTS AGAINST:

- provides opportunity for PA entities to no longer consider race and ethnicity in hiring, admissions, contracting and access to other opportunities
- opens door to individual claims of "reverse discrimination" (i.e., a Caucasian can claim race discrimination)
- fails to broaden the existing equal protections of the US Constitution and federal laws to include unprotected classes, such as sexual orientation

BALLOT QUESTION 4:

STATEWIDE REFERENDUM – ACT 2020-91 MAKING MUNICIPAL FIRE AND EMERGENCY MEDICAL SERVICES COMPANIES ELIGIBLE FOR LOANS

Ballot Question

Do you favor expanding the use of the indebtedness authorized under the referendum for loans to volunteer fire companies, volunteer ambulance services and volunteer rescue squads under 35 PA.C.S. §7378.1 (related to referendum for additional indebtedness) to include loans to municipal fire departments or companies that provide services through paid personnel and emergency medical services companies for the purpose of establishing and modernizing facilities to house apparatus equipment, ambulances and rescue vehicles, and for purchasing apparatus equipment, ambulances and rescue vehicles, protective and communications equipment and any other accessory equipment necessary for the proper performance of the duties of the fire companies and emergency medical services companies?

What this means (provided by LWVPA)

If you vote **YES**, you support expanding PA's loan program to paid municipal, as well as volunteer, fire and emergency medical services companies.

If you vote **NO**, you support keeping PA's loan program available to volunteer fire and emergency medical service companies and not to paid municipal fire and emergency medical services companies.

Background: This constitutional amendment was referred to the ballot as an exception to the normal procedure for passing constitutional amendments. "When a major emergency threatens or is about to threaten the state" the General Assembly may refer a constitutional amendment to the ballot with a two-thirds vote of each chamber. Specifically, here, the General Assembly determined there is a need for paid municipal fire departments and emergency medical service companies to update their facilities and equipment. Under current PA law, only volunteer fire and EMS companies are authorized to apply for loans from this program. The loan program's fund for volunteer companies was last approved by PA voters at \$50,000,000 in 2002. If approved, this new law would allow paid municipal fire and emergency medical service companies to also obtain loans from the program. The State Fire Commissioner administers these loans under specified codes and regulations. This bill does not expand the amount of money in the funds nor the purposes for which the loans can be used, it only addresses expanding the eligible pool of loan applicants.

Yes - For the Measure

- Provides opportunities for paid municipal fire and EMS companies to apply for loans to upgrade and replace equipment and facilities
- Increases potential for budget flexibility for municipalities to shift facility and equipment costs to personnel and other costs
- Promotes paid municipalities to upgrade and/or replace fire and EMS equipment and facilities

No - Against the Measure

- Increases applicant pool, and thus, the acceptance rate, for loans to upgrade and replace existing equipment and facilities for volunteer companies while not increasing the overall fixed amount of funds
- Potentially increases already existing budget constraints and recruitment of volunteer fire and EMS companies
- Expands existing oversight and demands on the State Fire Commissioner that administers and grants loans

BALLOT QUESTION

Allegheny County Proposed Ordinance Special Election Question:

Shall the Allegheny County Code, Chapter 205, Allegheny County Jail, be amended and supplemented to include a new Article III, which shall set forth standards governing conditions of confinement in the Allegheny County Jail?

Explanation of Ballot Question

If this question is approved by a majority of those voting, Chapter 205 of the Allegheny County Code, Allegheny County Jail, shall be added to include Sections 205-30 and 31 governing, regulating and documenting the conditions of confinement. The conditions of confinement affected by the proposed ordinance would prohibit solitary confinement (more than 20 hours per day) except for limited circumstances and not to be used as punishment and prohibiting the use of restraining chairs, chemical agents or leg shackles.

The Jail Warden shall prepare a monthly report regarding use of solitary confinement and lock downs.

A “Yes” vote is in favor of the above Ordinance provisions. A “No” vote opposes the above Ordinance provisions.

If approved, the Warden’s reporting requirements begin 30 days after approval. All other provisions begin 180 days after approval.

Background (provided by LWVPgh) A class action lawsuit filed on behalf of inmates in the Allegheny County Jail in September 2020 and pending in federal district court in the Western District of Pennsylvania alleges that inmates seeking mental health treatment are being punished with solitary confinement. Several states, such as Colorado, have limited the use of solitary confinement in their prison systems.

Yes - For the Measure

A: - Solitary confinement has been shown to have harmful psychological effects particularly for juveniles and persons with mental health issues including increased risk of suicide and post-traumatic stress disorder (PTSD). - Negative effectives of solitary confinement may continue to affect the person after their release from jail resulting in public safety and community health problems because the person cannot transition to normal living conditions. - Solitary confinement may be used inappropriately for punishment or as a means for controlling jail population when other more appropriate and effective means may be available.

No - Against the Measure

A: - Solitary confinement may help the jail administration control persons detained in jail. - Solitary confinement is a form of punishment that prison guards may use to discipline persons in jail. - The threat of use and the use of solitary confinement may protect other persons in the jail including the guards themselves, visitors to the jail and other persons detained in jail.

City of Pittsburgh Proposed Home Rule Charter Amendment Special Election Question:

Shall the Pittsburgh Home Rule Charter be amended and supplemented by adding a new Article 10: Powers of the Pittsburgh Police, containing Section 1001, which shall bar employees of the Pittsburgh Bureau of Police from executing warrants at any residence without knocking and announcing themselves?

Explanation of Ballot Question

If this question is approved by a majority of those voting, Article 10, Section 1001, Powers of the Pittsburgh Police will be added to the City of Pittsburgh Home Rule Charter, requiring Pittsburgh Police to physically knock and announce themselves before forcibly gaining entry to execute warrants. “No knock” procedures shall be prohibited. A “yes” vote indicates a vote in favor of this change and a “No” vote opposes this change. If approved by a majority of those voting, this amendment shall take effect upon the certification of the May 18, 2021 Municipal Primary Election results.

Background: (provided by LWVPgh) No knock warrants became widely used as part of the “War on Drugs,” but today our criminal justice system is viewing differently the approach to crimes solely involving drugs, in part, because of the racial discrimination that may be involved in enforcing drug laws.

The death of Briana Taylor in Louisville KY during the execution of a “no knock” warrant demonstrated the risks to human life from the use of this type of warrant. Since then, a number of municipalities have banned no knock warrants including Louisville, KY. Pittsburgh City Council has also introduced legislation to ban the use of no-knock warrants by Pittsburgh Police officers.

Yes - For the Measure

A: - Unaware that police officers are entering their home, residents may defend themselves with use of firearms or other force against which police officers may respond resulting in injury or death to residents and police officers. - No knock warrants may make it more difficult for errors in the warrant, such as service on the wrong residence or a bad tip from an informer, to be corrected without violence. - No knock warrants may result in individuals at the residence being injured or killed even though they are not identified in the warrant as having committed a crime.

No - Against the Measure

A: - Requiring police officers to announce and identify themselves as law enforcement officers could allow an alleged perpetrator to escape or evidence to be destroyed. - Requiring police officers to announce themselves as law enforcement officers could allow alleged perpetrators time to use violence to defend themselves. - The warrants may be served on dangerous people and there is a need for surprise to protect police officers.

Borough of Bethel Park Proposed Home Rule Charter Special Election Question:

Shall the Home Rule Charter of the Municipality of Bethel Park, Article 8, Section 801, Subsection A be amended to remove the requirement that the Planner become a resident of the Municipality of Bethel Park within one year of appointment?

Explanation of Ballot Question

If this question is approved by a majority of those voting, Article 8, Section 801, Subsection A, Planner, of the Charter will be amended to delete the requirement that the appointed Planner become a resident of the Municipality of Bethel Park within one year. No residency requirement would exist. If approved, this amendment shall take effect upon the certification of the May 18, 2021 Municipal Primary Election results.

Yes - For the Measure

A: - no response -

No - Against the Measure

A: - no response -

CRESCENT TOWNSHIP SPECIAL ELECTION QUESTION:

Shall the Township's 0.5 mil real estate tax supporting Crescent Township Volunteer Fire Department's provision of fire protection be increased to 1 mil?

Explanation of Ballot Question

The Township collects a 0.5 mil real estate tax supporting the Crescent Township Volunteer Fire Department's provision of fire protection. The current rate of 0.5 mil equals 5 cents per 100 dollars of assessed valuation per year. The ballot question asks voters whether the rate should be increased to 1 mil, or 10 cents per each hundred dollars of assessed valuation per year.

A vote of "Yes" approves the increase to 1 mil, or 10 cents per 100 dollars of assessed valuation per year. A vote of "NO" disapproves the increase, but leaves the current rate of 0.5 mil, or 5 cents per each 100 dollars of assessed valuation per year, in place.

Yes - For the Measure

A: - no response -

No - Against the Measure

A: - no response -



**Voters Guide
Primary Election
May 18, 2021**

Making your voice heard is

★
UP TO YOU



VOTE 2021

www.pavoterservices.pa.gov



LWV LEAGUE OF WOMEN VOTERS®
OF GREATER PITTSBURGH

Visit us at: lwvpgh.org



PA Voter Info: VotesPA.com



Ballot Listings: Vote411.org

