



Voters Guide Primary Election May 16, 2023



www.lwvpgh.org

Published by
League of Women Voters of Greater Pittsburgh
436 Seventh Avenue Suite 350
Pittsburgh, PA 15219
412-261-4284

Prepared with funding from:
The Pittsburgh Foundation, Goldin Foundation, Eden Hall Foundation, and
individual donations to the League of Women Voters of Greater Pittsburgh

Be a Super Voter – Vote Every Time

New Pittsburgh Courier May 3-9, 2023

This Voters' Guide was prepared by the League of Women Voters of Greater Pittsburgh and the League of Women Voters of Pennsylvania Citizen Education Fund. The League is a non-partisan organization and does not support or oppose any political party or candidate. Its purpose is to promote political responsibility through informed and active participation of citizens in government.

The Voters' Guide listings are based entirely on material submitted by the candidates. In cases in which questionnaires were not returned, only the candidate's name and party are listed. Every candidate was asked to submit a photograph; those received are printed.

The guide lists all candidates in the May 16, 2023, municipal primary for Justice of the Pennsylvania Supreme Court, Judges of the Superior Court, Judge of the Commonwealth Court, and Judge of the Allegheny County Court of Common Pleas. Also listed are candidates for Allegheny County Chief Executive, District Attorney, Controller, Treasurer, and Allegheny County Council. Also listed are candidates for the offices of Pittsburgh City Council, Pittsburgh Treasurer, and Pittsburgh School Board Directors. The candidate's names are listed as they will appear on the ballot.

Study the guide and choose the candidates for whom you want to vote.

League of Women Voters' Guide to Municipal Primary Election

May 16, 2023
(Polls open from 7 AM to 8 PM)

You may take the guide into the voting booth to help you. Nothing in this guide should be construed as an endorsement of any candidate by the League of Women Voters.

Voters who are not sure if they are registered to vote should call the Allegheny County Division of Elections, 412-350-4510. To find out what district you live in call the Elections Division or the League of Women Voters Community Information Center, 412-261-4284, or email info@lwvpgh.org.

Voting in Primary Election

To vote in this primary election you must have been registered by May 1, 2023.

Your registration is permanent if you did not change your address or change your name; and if you have voted once in the last two federal elections.

Prisoners' Rights

Voters with criminal records are eligible to regis-

ter and to vote:

- if they are not currently incarcerated on a felony charge, or
- if they are incarcerated but in pretrial status, or
- if they are incarcerated for a misdemeanor, or
- if they are on probation or released on parole.

Identification Requirements for New Voters

If you are a new voter or if you are voting at a polling place for the first time, you must bring your voter ID card or a photo ID such as a driver's license, Passport or some other form of Federal or State government issued ID. Some forms of non-photo ID are also acceptable such as a firearm permit, current utility bill, bank statement, paycheck, or government check containing your home address. If you do not have any acceptable ID, you must be allowed to vote by provisional ballot.

Provisional Ballots

If your right to vote is challenged at the polls on Election Day and the problem cannot be resolved at the polling place, the Judge of Elections at the polling place should telephone the County Division of Elections. The problem could be resolved by phone if your name appears on the county records. If it does not and you want to try to resolve the problem, then you can go in person to the County Division of Elections where a judge from the Court of Common Pleas will be on duty to resolve election problems. Alternatively, you can ask for and vote by provisional ballot. Anyone may request a provisional ballot. If it is later determined that you were eligible to vote, your ballot will be counted. You will be given instructions on how to determine if your vote was counted.

Mail-in Voting

Voters have the option to vote by mail without pro-

viding any reason or excuse. To apply online, go to vote.pa.gov. Or contact the county election office to request a paper application.

Applications for a mail-in ballot must be received by the Allegheny County Elections Division by May 9, 2023 at 5pm. Completed mail-in ballots must be received by the Elections Division by May 16, 2023 at 8pm Election Day to be counted.

Absentee Voting

Registered voters who are ill, disabled, or will be absent from the municipality on Election Day may vote by absentee ballot. Completed APPLICATIONS for absentee ballots must be received by the Allegheny County Elections Division by 5 P.M., Tuesday, May 9. Completed absentee BALLOTS must be received back at the Elections Division by 5 P.M. on Tuesday, May 16. If an emergency arises (unexpected illness or business trip) after the Tuesday application dead-

line, call the Elections Division 412-350-4520 for information on emergency absentee voting. Proof of emergency may be required. An emergency application and ballot can be obtained and voted by 8pm on Tuesday, May 16. Any disabled voter having questions regarding the accessibility of a polling place should consult the Elections Division at 412-350-4520.

Write-in Voting

For write-in voting information, check with the workers at your polling place before entering the voting booth.

Election Day Problems

If your right to vote is challenged at the polls on Election Day and the problem cannot be resolved at the polling place, the Judge of Elections at the polling place may telephone the County Division of Elections. The problem could be resolved by phone if your name appears on the county records. If it does not and you want to try to resolve the problem, then you will have to go in person to the county Board of Elections where a judge from the Court of Common Pleas will be on duty to resolve election problems.

Internet Voters' Guide

This Voters' Guide and other useful information for voters can be found on the League's web site at <http://lwvpgh.org> or can be found by going to www.vote411.org and typing in your home address and zip code.

When there's a vacuum in our democracy, when we don't vote, when we take our basic rights and freedoms for granted, when we turn away and stop paying attention and stop engaging and stop believing and look for the newest diversion, ... then other voices fill the void. A politics of fear and resentment and retrenchment takes hold.

- Barack Obama, Former U.S. President



Pennsylvania State Judicial Races

Pennsylvania Justice of the Supreme Court

Description of office: The Supreme Court of Pennsylvania is the highest court in the Commonwealth and the oldest appellate court in the nation. The Supreme Court's administrative powers and jurisdictional responsibilities are vested with the seven-member court by the Pennsylvania State Constitution and a collection of statutes known as the Judicial Code. The justice with the longest continuous service on the Supreme Court automatically becomes Chief Justice. Administratively, the courts within the Unified Judicial System are largely responsible for organizing their own staff and dockets; however, the Supreme Court has several committees and boards responsible for writing and enforcing rules for judges, attorneys, and litigants to ensure an efficient and fair judicial review. Annually, the seven justices receive over 3,000 requests for appellate review.

Term: 10 years **Salary:** \$244,793
(Vote for ONE)

Democratic Primary Ballot

(Choose 1 of 2 for Justice of
the Supreme Court)

Daniel McCaffery

Party: Democratic
Biographical Info:
County: Philadelphia
Occupation: Judge of the Pennsylvania Superior Court
Education: Temple University School of Law, J.D., 1991 Temple University, SCAT, B.A., 1988 Father Judge High School, 1982
Qualifications: 32 years as an attorney, trial and appellate court judge, tried more cases and presided over more litigation than any other candidate. Highly Recommended by the PA Bar, the only Veteran on PA's Appellate Courts. Judge, Court of Judicial Discipline, supervising judge for PA wiretap applications.
Campaign Website: <http://www.judgemccaffery.com>
Campaign Facebook URL: <http://www.facebook.com/McCafferyforsupremecourt>
Twitter Handle: twitter.com/judgemccaffery
Campaign Instagram URL: <http://www.instagram/judgemccaffery>



DANIEL MCCAFFERY

Questions:
Q: Pennsylvania's three co-equal branches of government—Executive, Legislative, and Judicial—each act as a check on the power of the others. In practical terms, what does this relationship of checks and balances mean to you?

A: In its most general terms, as it pertains to the question, the court has a duty to ensure the Constitutional rights of the people are appropriately applied and protected. I would describe my approach to constitutional interpretation as "Living Constitution"—meaning that the constitution was intentionally drafted using broad language to allow its concepts to evolve with changing societal conditions. As to my approach to interpreting rules, legislation & statutes, I would describe myself as a textualist in that I attempt to give a common sense meaning and will give the intent to apply a reasonable analysis to interpret any ambiguous word or provision.
Q: What criteria would you consider in deciding a case that could affect long standing precedent?
A: Every case must be considered based on the facts of the individual case, the laws pertaining to the case and were the appropriate Constitutional rights and protections fairly applied to the people and case in question.

Debbie Kunselman

Party: Democratic
Biographical Info:
County: Beaver
Occupation: Judge of the Superior Court of Pennsylvania
Education: J.D. Notre Dame Law School; B.A. Penn State
Qualifications: 17 years of judicial experience; 12 years as a trial court judge in Beaver County and 5 years as a state appellate court judge. experience handling civil, criminal, family and juvenile cases; 8 yrs as Chief County Solicitor
Campaign Website: <http://www.kunselmanforpa.com>
Campaign Facebook URL: <http://www.facebook.com/JudgeDebbie17>



DEBBIE KUNSELMAN

Questions:
Q: Pennsylvania's three co-equal branches of government—Executive, Legislative, and Judicial—each act as a check on the power of the others. In practical terms, what does this relationship of checks and balances mean to you?
A: The relationship of checks and balances between the three branches of government means that each branch must respect the authority of the other branches and act within the authority given to them. For example, the legislature has the authority to enact laws. However, those laws cannot infringe upon the rights guaranteed by the federal or state constitutions. If they pass such a law, the judicial branch can strike it down as unconstitutional. However, if the law comports with the constitution, judges are obligated to apply the law as it is written. Likewise, absent emergencies, the executive branch needs probable cause and a warrant from a judge before conducting a search. In this way, judges protect the right to privacy.
Q: What criteria would you consider in deciding a case that could affect long standing precedent?
A: Usually, overruling long standing precedent is warranted when (and only when) a precedent is "manifestly absurd or unjust" as in Brown v. Board of Education. The U.S. Supreme Court in Ramos v. Louisiana gives 3 guides I would consider: 1) Is the prior decision not just wrong, but grievously or egregiously wrong? In deciding this, I would look at the quality of the precedent's reasoning, consistency and coherence with other decisions, changed

law or facts, and workability. 2) Has the prior decision caused significant negative jurisprudential or real-world consequences? 3) Would overruling the prior decision unduly upset reliance interests? These considerations set a high standard and require much deliberation before changing precedent.

Republican Primary Ballot

(Choose 1 of 2 for Justice of
the Supreme Court)

Patricia A. McCullough

Party: Republican
Biographical Info:
County: Allegheny
Occupation: Statewide Appellate Court Judge-Commonwealth Court of PA
Education: B.A. University of Pittsburgh, magna cum laude; J.D. University of Pittsburgh School of Law
Qualifications: Judge, PA Commonwealth Court 12+ yrs. ruling on cases that go directly to PA Supreme Ct.; trial judge, Allegheny County Ct. of Common Pleas; Asst.General Counsel, Univ. of Pgh.; private practice attorney; Director Cath.Char; chair Allgny Cty. Bd.Prop.App.; Chair Appellate Ct.Proc.Rules Comm.
Campaign Website: <http://judgemccullough4supremecourt.com>



PATRICIA A. MCULLOUGH

Questions:
Q: Pennsylvania's three co-equal branches of government—Executive, Legislative, and Judicial—each act as a check on the power of the others. In practical terms, what does this relationship of checks and balances mean to you?
A: These separate but equal branches of government have distinct powers. The legislative branch makes the law, the executive branch enforces the law and the judiciary is to interpret the law. This means that courts are not to "legislate from the bench." Judges should apply the rule of law and interpret the law and the Constitutions of the United States and PA as written, and reign in the other branches of government if they overstep their constitutional bounds. Thomas Jefferson warned that if judges interpret the law to be what they want, the Constitution would be a "mere thing of wax in the hands of the Judiciary, which they may twist and shape into any form they please." Constitutional rights are protected with proper separation of powers.
Q: What criteria would you consider in deciding a case that could affect long standing precedent?
A: While the concept of stare decisis is traditionally applied by judges in assessing cases, courts are at times confronted with whether to overrule prior precedent. Criteria to be carefully considered includes inconsistency with related decisions, erroneous or incomplete facts, misinterpretation of law, or the unconstitutionality of prior precedent. Brown v Board of Education is a longstanding example of the US Supreme Court overruling prior precedent on the basis that it violated the Constitution, specifically the Equal Protection clause of the Fourteenth Amendment. Brown ended the unconstitutional precedent of "separate but equal" in Plessy v Ferguson . The US Supreme Court focused on Constitutional reasons in other cases.

Carolyn Carluccio

Party: Republican
Biographical Info:
County: Montgomery
Occupation: Court of Common Pleas Judge
Education: Dickinson College, Widener University School of Law
Qualifications: First female President Judge of the Montgomery County Court of Common Pleas serving in the Criminal, Family, and Civil Court Benches. Montgomery County Chief Deputy Solicitor, Director of Human Resources, Chief Public Defender, Assistant United States Attorney.
Campaign Website: <http://www.judgcarluccio.com>
Campaign Facebook URL: <http://www.facebook.com/judgcarluccioforsupremecourt>
Twitter Handle: twitter.com/JudgeCarluccio
Campaign Instagram URL: <http://www.instagram.com/judgcarluccioforsupremecourt/>



CAROLYN CARLUCCIO

Questions:
Q: Pennsylvania’s three co-equal branches of government—Executive, Legislative, and Judicial—each act as a check on the power of the others. In practical terms, what does this relationship of checks and balances mean to you?
A: Our system of checks and balances is vital to our democracy and should be carefully guarded. We must ensure one branch does not overstep its authority. For the Executive Branch, it could be excessive Executive Orders which can circumvent Legislative powers. For the Judiciary, it is legislating from the bench which can also circumvent Legislative powers. The Judiciary also has the duty of ensuring that Legislative and Executive actions do not overstep their constitutional roles. It’s critical that the Judiciary only applies the law as it is written in the Pennsylvania and United States Constitutions. Inappropriate actions taken by the Executive branch and even the Judiciary takes power from our legislature which is closest to the people.
Q: What criteria would you consider in deciding a case that could affect long standing precedent?
A: In deciding a case that could affect long-standing precedent, just as in any case that comes before me, I will apply the law as it is written in the constitution. Justices of the Pennsylvania Supreme Court must not allow themselves to be swayed by the media, Executive or Legislative branches, and certainly not by the popular opinion of the day. Even our own personal beliefs must be tempered to ensure that the Judiciary remains unbiased and only make rulings based on the law.

Pennsylvania Judge of the Superior Court

Description of office: The Superior Court is one of Pennsylvania’s two statewide intermediate appellate courts. This court, established in 1895, reviews most of the civil and criminal cases that are appealed from the Courts of Common Pleas in the Commonwealth’s 67 counties. The Superior Court consists of 15 judges. The president judge is elected to a five-year term by his/ her colleagues. A large number of appeals flow to the Superior Court from the trial courts. Generally, appeals are heard by panels of three judges sitting in Philadelphia, Harrisburg, or Pittsburgh. The court often is the final arbiter of legal disputes. Although the Supreme Court

may grant a petition for review of a Superior Court decision, most petitions are denied, and the ruling of the Superior Court stands.


Term: 10 years **Salary:** \$230,974
(Vote for not more than TWO.)

Democratic Primary Ballot

(Choose 2 of 3 for Justice of the Supreme Court)

Pat Dugan

Party: Democratic
Biographical Info:
County: Philadelphia
Occupation: President Judge and Veterans Court Judge
Education: Juris Doctorate Rutgers School of Law
Qualifications: Judge 16 years, 4 years President Judge (elected by a vote of 27 judges), 13 years attorney focused on criminal defense & child advocacy, 23 years Army (and Reserves) Infantry Paratrooper, Civil Affairs, JAG with 5 years overseas, started a Veterans Court 2010, married father of 6
Campaign Website: <http://judgepatdugan.com>
Campaign Facebook URL: <http://www.facebook.com/judgepatdugan>



PAT DUGAN

Questions:
Q: Pennsylvania’s three co-equal branches of government—Executive, Legislative, and Judicial—each act as a check on the power of the others. In practical terms, what does this relationship of checks and balances mean to you?
A: The concept of the three branches of government is the foundation for our Republic and our Commonwealth, as the separation of powers assures a fair and equal system of checks and balances, as it prevents overreach by any one branch over the other two. It is the court’s obligation to interpret the laws and acts of the executive and legislative branches. It is the court’s obligation to interpret laws, and not legislate from the bench, but to umpire and call balls and strikes fairly and independently.
Q: What criteria would you consider in deciding a case that could affect long standing precedent?
A: I believe that a prior court’s precedent should be given serious consideration to remain in place and in effect, however that is not set in stone. Before a court reverses any previous decisions, the reviewing court must take into account whether the decision was poorly reasoned, whether there has been a change in the statutory law, review of any intervening events or circumstances, and there is legal justification to overrule prior precedent. It is not a decision to be taken lightly and any change in the law must not undermine the public’s confidence in the judicial system and must maintain the integrity of the judicial system.

Timika Lane

Party: Democratic
Biographical Info:
County: Philadelphia
Occupation: Judge

Education: Howard University—Bachelor of Arts, Rutgers Law School—Doctor of Law (JD)
Qualifications: Elected in 2013 to the Philadelphia Court of Common Pleas and immediately assigned to one of the busiest trial divisions in Pennsylvania. Judge Lane has presided over thousands of jury and bench trials and authored over 100 judicial opinions. She currently serves in the civil division.
Campaign Website: <http://www.judgelaneforpa.com/>
Campaign Facebook URL: <http://www.facebook.com/LaneforSuperiorCourt>
Campaign Instagram URL: <http://www.instagram.com/laneforsuperiorcourt/>




TIMKIA LANE

Questions:
Q: Pennsylvania’s three co-equal branches of government—Executive, Legislative, and Judicial—each act as a check on the power of the others. In practical terms, what does this relationship of checks and balances mean to you?
A: Checks and balances are an integral part of our government, essential to ensuring that no one branch can overpower its boundaries. The role of the Judicial branch ensures that the legislative and executive branches maintain constitutional rights within the law, furthering that justice be equally, effectively and lawfully maintained and upheld. In short, checks and balances are critical to a functioning government and must be maintained.
Q: What criteria would you consider in deciding a case that could affect long standing precedent?
A: Presiding a case in which in theory could affect a long-standing precedent must be weighted carefully and with respect to the past precedent. Long standing precedents are not without fault, and throughout history the judicial system has seen changes occur to long standing precedents for better and for worse. It is through this evolution, as society changes and laws are adapted to those changes that consideration of both the changes in the legal system and society should be considered, as well as aforementioned respect to the long standing precented and whether its reasoning still stands solid within the judicial and societal systems.

Jill Beck

Party: Democratic
Biographical Info:
County: Allegheny
Occupation: Commercial litigator & appellate attorney
Education: B.A. in Criminal Justice—The George Washington University (cum laude graduate); J.D.—Duquesne University School of Law (cum laude graduate)
Qualifications: Jill has practiced in every area the Superior Court hears, has practiced in the Superior Court & appellate courts across the country, and spent 10 years on the other side of the bench as a law clerk—6 on the Superior Court, 4 on the Supreme Court—where she drafted over 500 decisions.
Campaign Website: <http://www.JillBeck.com>
Campaign Facebook URL: <http://www.facebook.com/electjillbeck>



JILL BECK

Twitter Handle: twitter.com/electjillbeck
Campaign Instagram URL: <http://www.instagram.com/electjillbeck>

Questions:

Q: Pennsylvania's three co-equal branches of government—Executive, Legislative, and Judicial—each act as a check on the power of the others. In practical terms, what does this relationship of checks and balances mean to you?

A: The judiciary is a separate but coequal branch of government. It is not the role of the Court to legislate, but neither is it permissible for the Court to serve as a rubber stamp for the legislative and executive branches of government (or the courts below). Appropriate deference to these bodies must be given when reviewing & interpreting their work, but it is solely in the Court's purview to determine the constitutionality of the measures taken and the legal correctness of their actions. The Court serves a critical role of interpreting our statutes and our constitutions (federal and state), which must be viewed in terms of the intent of the drafters at the time of their passage as well as the evolving standards of decency of our society.

Q: What criteria would you consider in deciding a case that could affect long standing precedent?

A: The decision to overrule precedent, particularly long-standing precedent, should not be taken lightly. Factors to consider include, but are not limited to, the correctness of the prior reasoning, its consistency with related precedent, changes in the law & society subsequent to the decision, & the level of reliance on the precedent by the legal system and the public.

Republican Primary Ballot

(Choose 2 of 2 for Justice of the Supreme Court)

Maria Battista

Party: Republican
Biographical Info:
County: Clarion
Occupation: Attorney/Executive
Education: Clarion University, B.S.; Westminster College, M.Ed.; Ohio Northern University, J.D.; University of Pittsburgh, Ed.D.

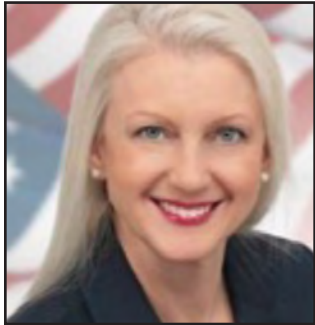
Qualifications: 15+ years experience in Civil, Criminal and Administrative Law; Former Assistant District Attorney; Former Attorney with the Governor Corbett Administration; Served as an Administrative Hearing Officer where I presided over hundreds of hearings and issued hundreds of administrative decisions.

Campaign Website: <http://www.BattistaForJudge.com>
Campaign Facebook URL: <http://Facebook.com/BattistaForJudge>

Questions:

Q: Pennsylvania's three co-equal branches of government—Executive, Legislative, and Judicial—each act as a check on the power of the others. In practical terms, what does this relationship of checks and balances mean to you?

A: The Framers' purpose in dividing power between the three branches of government was to ensure that no branch of government became too powerful. James



MARIA BATTISTA

Madison's wisdom in Federalist 51 was to create a check against the authority of a single branch of government, sharing the decision-making power of the new federal government. For Pennsylvania, this model of separation of powers has created its own form of checks and balances between our three co-equal branches. In practical terms, this has empowered the courts, particularly the appellate courts, to better protect the rights of the people of this Commonwealth. By serving as a check against the executive and legislative branches, the judiciary serves to safeguard against abuses by either.

Q: What criteria would you consider in deciding a case that could affect long standing precedent?

A: Stare decisis, a Latin term which means "let the decision stand," or "to stand by things decided," is a central tenet of the American legal system. This doctrine highlights the importance of precedent in our legal tradition. Applying precedent to the particular facts of a case is a way to provide predictability and consistency in the law. While I cannot speak directly about how I would rule in any case that may appear before me, precedent may be used as a guide, as well as the law as it has been written and the particular facts of a case. In some instances, the issue of constitutionality may be raised by the parties.

Harry F. Smail, Jr.

Party: Republican
Biographical Info:
County: Westmoreland
Occupation: Judge
Education: Grove City College Class of 1988
Duquesne School of Law
Night School Class of 1997
Qualifications: 14 years as a practicing attorney and nearly 9 years as sitting judge in Westmoreland County
Campaign Website: <http://www.VoteJudgeSmail.com>



HARRY F. SMAIL, JR.

Questions:

Q: Pennsylvania's three co-equal branches of government—Executive, Legislative, and Judicial—each act as a check on the power of the others. In practical terms, what does this relationship of checks and balances mean to you?

A: The Founders' in their wisdom established a system of checks and balances as an attempt to ensure that no branch of our government could have unbounded power. Our system is based on on the freedom of our people and these checks and balances ensure that is difficult to pass laws or regulations that can curtail that freedom. Our constitution is our guiding light and any branch that strays from that document can be quickly put in line with it by another branch. It is the judiciary's role, as the only branch to not face regular election, to ensure that the constitution is being adhered to by intermediary courts and by the the legislative and executive branches.

Q: What criteria would you consider in deciding a case that could affect long standing precedent?

A: My guiding principle when deciding a case is the text of the constitution and the intent of a statute when applying that statute in the course of a case. Precedent or stare decisis is critical in this review. Stare Decisis is critical in providing predictability and stability to the courts. I leave open the possibility that a court must at times correct previous encroachments by the judiciary relative to constitutional review and deviation of the facts. I believe it it is a heavy burden to demonstrate such encroachments when weighing prior precedents.

Pennsylvania Judge of the Commonwealth Court

Description of office: The Commonwealth Court is one of Pennsylvania's two statewide intermediate appellate courts. This court, established in 1968, is unlike any other state court in the nation. Its jurisdiction generally is limited to legal matters involving state and local government and regulatory agencies. Litigation typically focuses on subjects such as banking, insurance, utility regulation, and laws affecting taxation, land use, elections, labor practices, and workers compensation. The Commonwealth Court also acts as a court of original jurisdiction, or a trial court, when lawsuits are filed by or against the Commonwealth. The Commonwealth Court is made up of nine judges. The president judge is elected to a five-year term by his/her colleagues. Generally, appeals are heard by panels of three judges sitting in Philadelphia, Harrisburg, or Pittsburgh.

Term: 10 years

Salary: \$230,974

(Vote for ONE.)

Democratic Primary Ballot

(Choose 1 of 2 for Judge of the Commonwealth Court)

Matt Wolf

Party: Democratic
Biographical Info:
County: Philadelphia
Occupation: Judge
Education: B.S. Political Science, LeMoyne College, J.D., Loyola University School of Law, numerous judicial education training courses.

Qualifications: The only sitting judge in the race. 25 years of civil rights trial experience. 5 years plus of judicial experience, with a majority of that as a Supervising Judge. 20 years of military experience, 17 as an Army JAG, awarded Bronze Star Medal, service in Iraq and Afghanistan.

Campaign Website: <http://www.judgemattwolf.com>
Campaign Facebook URL: <http://www.judgemattwolf.com>
Twitter Handle: twitter.com/judgemattwolf



MATT WOLF

Questions:

Q: Pennsylvania's three co-equal branches of government—Executive, Legislative, and Judicial—each act as a check on the power of the others. In practical terms, what does this relationship of checks and balances mean to you?

A: The rule of law. Each branch of government serves as a check on the others. Legislatures pass laws, sometimes in reaction to judicial decisions and executive actions. Courts interpret the law and the facts and the Executive essentially carries out the functions of the government, subject to the laws as interpreted by the Courts. People who serve as elected officials usually take an oath of office to uphold the laws and the state and federal constitutions. I take such oaths seriously and would commit to upholding the law, as should each

the other branches of government.

Q: What criteria would you consider in deciding a case that could affect long standing precedent?

A: It depends on the case, the facts and the law. This question cannot be answered in vacuum. There are antiquated decisions in Common Law that are long standing precedent which call to be overturned such as the Supreme Court's 1896 Plessy v. Ferguson decision which upheld the legality of racial segregation in America. It took 58 years for that case to be overturned in Brown v. Board of Education of Topeka. Some long standing precedent should be overturned such as the "separate but equal" line of cases as an example. Other long standing precedent should be respected, particularly as it relates to the preservation and recognition of fundamental constitutional rights.

Bryan Neft

Party: Democratic
Biographical Info:
County: Allegheny
Occupation: Attorney
Education: B.A., Political Science, University of Pennsylvania 1986; J.D. Boston University School of Law, 1989
Qualifications: I have practiced law for 33 years. I was a law clerk for the Honorable William F. Cercone of the Pennsylvania Superior Court. I have practiced in 30 Pennsylvania counties and all of the Pennsylvania appellate courts including the Commonwealth Court.
Campaign Website: <http://www.bryanneft.com>
Campaign Facebook URL: <http://www.facebook.com/bryanneft>
Twitter Handle: twitter.com/BryanNeft
Campaign Instagram URL: <http://www.instagram.com/votebryanneft>



BRYAN NEFT

Questions:
Q: Pennsylvania's three co-equal branches of government—Executive, Legislative, and Judicial—each act as a check on the power of the others. In practical terms, what does this relationship of checks and balances mean to you?
A: Each branch of government has a role in limiting overreach by a co-equal branch of government. In order for the judiciary to serve as a check on the legislative and executive branches, the judiciary must be independent and allowed to decide cases brought to it without fear of reprisal or retribution. Courts have authority within their jurisdiction to interpret laws and the Constitution. It is within the province of the the Legislature and the Executive branches to change the law if a court ruling creates an unintended result.
Q: What criteria would you consider in deciding a case that could affect long standing precedent?
A: The Commonwealth Court may not alter long-standing precedent of the Pennsylvania Supreme Court. However, it can revisit its own decisions, and it can review decisions of a Commonwealth Court judge sitting as the trial judge hearing a case in the Court's original jurisdiction. Such a review would require a thorough understanding of the history of the precedent, why it came into being and why it is being challenged as unsound.

Josh Prince

Party: Republican
Biographical Info:
County: Berks
Occupation: Attorney at Prince Law Offices, P.C. and Civil Rights Defense Firm, P.C.
Education: Graduated with honors from McGill University in 2004—Bachelor of Arts, double major in Political Science and World Religions; Widener Law School 2006-2009—Juris Doctorate, graduated cum laude and as a member of Law Review
Qualifications: I've spent my 13-year career defending our civil rights in the state and federal courts. Beyond having successfully litigated numerous appeals in the PA courts, including before the PA Supreme Court, in just the past 4 years, I've successfully litigated 8 cases before the Commonwealth Court.
Campaign Website: <http://www.PrinceForJustice.com>
Campaign Facebook URL: <http://www.facebook.com/PrinceForPA>
Twitter Handle: twitter.com/PrinceForPA
Campaign Instagram URL: <http://www.instagram.com/princeforpa/>



JOSH PRINCE

Questions:
Q: Pennsylvania's three co-equal branches of government—Executive, Legislative, and Judicial—each act as a check on the power of the others. In practical terms, what does this relationship of checks and balances mean to you?
A: It is the constitutionally mandated and necessary separation of powers to ensure that no one branch of government becomes too powerful or usurps the power of the People. We have, unfortunately, in recent times seen the harmful effects of when branches of government overstep their constitutionally limited boundaries. For example, when a judge legislates from the bench—thereby usurping the powers of the Executive and Legislative branches—the constitutionally mandated separation of powers is violated and the People's confidence in the Judiciary is eroded. This is why it is imperative that we only elect judges who will uphold the law as written and Constitution as intended, without consideration for one's personal views or beliefs.
Q: What criteria would you consider in deciding a case that could affect long standing precedent?
A: As litigants and the legal community must be able to rely on precedent to understand their rights and obligations, it is imperative that precedent only be overturned where a manifest justice has occurred and necessitates correction, such as the abhorrent decision in the Dred Scott case, and not where the overturning of precedent would be for political or other reasons. Where appropriate, the criteria I would consider are the quality of the reasoning for the past decision, consistency of the the existing precedent with related decisions, legal developments since the past decision that shed new light on the existing precedent and what is the reasonable implementation of the new precedent within the legal system and its impact moving forward.

Megan Martin

Party: Republican
Biographical Info:
County: Cumberland
Occupation: Attorney
Education: JURIS DOCTOR, May 1994, Widener University School of Law, Harrisburg, PA; BACHELOR OF ARTS, June 1991, University of Delaware, Newark, DE

Qualifications: I am honored to be endorsed by the PA Republican Party and recommended by the PA Bar Association. I also have the unique distinction of having served in all 3 branches of our state government and as an attorney for the US Navy. My qualifications stand alone in the race for Commonwealth Court.
Campaign Website: <http://meganmartinforpa.com/>
Campaign Facebook URL: <http://www.facebook.com/MeganMartinforPA/>
Campaign Instagram URL: <http://www.instagram.com/meganmartinforpa/>



MEGAN MARTIN

Questions:
Q: Pennsylvania's three co-equal branches of government—Executive, Legislative, and Judicial—each act as a check on the power of the others. In practical terms, what does this relationship of checks and balances mean to you?
A: I respect the very different yet equally important roles of the three branches. When it comes to our judges, the people deserve to have judges who are fair & impartial, respect & defend the rule of law, protect our Constitutional rights & freedoms, apply the law as it was written by our General Assembly, & who hold government accountable because government must follow the law, too. Our judges must be exemplary public servants who act in the public's interest, not to further any political agenda or their own personal agenda. Judges must not make policy decisions from the bench that are reserved for our elected representatives to make. We need our judges to be independent as our Constitution created them to be. I will be that judge.
Q: What criteria would you consider in deciding a case that could affect long standing precedent?
A: Judges should approach every case keeping in mind their oath to support, obey & defend the Constitution. The Constitution should be their North Star. Judges should apply the law as it was written by the General Assembly. Judges should not be influenced by public opinion or pressure; they should follow the law. Precedent exists to maintain the rule of law. Defending the rule of law helps promote a world without chaos. It gives consistency to our judicial decision-making process. It ensures that individuals in similar situations are treated alike rather than being subject to the personal views of a particular judge. I respect the Constitution & rule of law. I respect precedent. I will continue to do so as a judge on our Commonwealth Court.
Q: What criteria would you consider in deciding a case that could affect long standing precedent?
A: Judges should approach every case keeping in mind their oath to support, obey & defend the Constitution. The Constitution should be their North Star. Judges should apply the law as it was written by the General Assembly. Judges should not be influenced by public opinion or pressure; they should follow the law. Precedent exists to maintain the rule of law. Defending the rule of law helps promote a world without chaos. It gives consistency to our judicial decision-making process. It ensures that individuals in similar situations are treated alike rather than being subject to the personal views of a particular judge. I respect the Constitution & rule of law. I respect precedent. I will continue to do so as a judge on our Commonwealth Court.

Republican Primary Ballot

(Choose 1 of 2 for Judge of the Commonwealth Court)

Judge of the Court of Common Pleas

Description: The Court of Common Pleas is primarily a trial court. There are four divisions of the Court of Common Pleas: Civil, Criminal, Orphans', and Family. The judges can be assigned from one division to another as needed. Judges can run on both the Republican and Democratic tickets. **Term:** 10 years

Anthony DeLuca

Party: Dem,Rep
Biographical Info:
Campaign Phone: 412-401-6963
Campaign Email: DeLucaforJudge2023@gmail.com
Campaign Web Site: DeLuca4Judge.com
Education: University of Pittsburgh School of Law, Magna Cum Laude, JD 1997, Boston College, BA 1994,
Qualifications for office: Highly Recommended by the Allegheny County Bar Association, Implemented and Developed Mental Health Court in Allegheny County, Pro Bono Work with Individuals with Mental Health Struggles in the Criminal Justice System, Union Labor Lawyer - would be the only one serving on the court, tried hundred of cases in the court
Facebook: <https://www.facebook.com/anthonydelucaforjudge/>
Twitter: https://twitter.com/delucaforjudge?fbclid=IwAR1r4fw2tNgxgrAFCZYTTAcBw6ccZDI8CG-pWoiEUu8c38pHzhkdXw_rsPwM
term: 10
campaignwebsite: DeLuca4Judge.com



ANTHONY DELUCA

Questions:
Q: Is gun violence best addressed as a public health and public safety issue or as a law enforcement issue?
A: Gun violence is clearly a public health issue. The way to stop gun violence is to provide abundant mental health resources to those in need concurrent with outreach to find the people who need those resources. Additionally, as a Democrat I believe that economic opportunity for all people would also reduce gun violence. However, until society provides those resources and opportunities, law enforcement must still be involved in the process of removing guns from those that mean others harm. Regardless of personal beliefs, I would always rule fairly based upon the facts and the law.
Q: Describe your legal experience in the Civil, Criminal, Family and Orphans Division and why these qualify you to be a judge?
A: I am proud of my diverse career. I have practiced in all areas of the Allegheny County Courts. I have served as an attorney in the Criminal Courts for over twenty years. During that time I have tried hundreds of cases and worked on building Mental Health Court. In the Family Courts I have worked extensively on delinquency matters. In the Civil Courts I have served as a Union Labor Lawyer and plaintiff's lawyer on numerous cases. Finally, I have handled estate matters, and guardianship proceedings in Orphans Court. No other candidate has my broad experience .

Patrick A. Sweeney

Party: Dem,Rep
Biographical Info:
Campaign Phone: 412-867-0671
Campaign Email: patricksweeneyforjudge@gmail.com
Campaign Web Site: patricksweeneyforjudge.com
Education: JD, University of Pittsburgh School of Law, 1996; BA, University of Pittsburgh, 1992
Qualifications for office: 25 years as a public defender. Experience in all four divisions of the Court of Common Pleas. Recommended by the Allegheny Bar. Endorsed by the Democratic Party of Allegheny County.
Facebook: facebook.com/PatrickSweeneyforJudge
term: 10
campaignwebsite: //patricksweeneyforjudge.com/



PATRICK A. SWEENEY

Questions:
Q: Is gun violence best addressed as a public health and public safety issue or as a law enforcement issue?
A: I believe gun violence is too complex to fashion a simple policy response that does not include both a law enforcement AND public health component. For law enforcement, those convicted of committing violent acts—particularly with firearms—must be dealt with appropriately by the courts. For public health, those of us working in the criminal justice system have been calling for expanded treatment opportunities not only for those ensnared in the criminal and juvenile justice system, but for society writ large. Too often we read of violent crimes committed by those with mental health episodes.
Q: Describe your legal experience in the Civil, Criminal, Family and Orphans Division and why these qualify you to be a judge?
A: Through my work in the Public Defender's office, I have appeared in every division of the Court of Common Pleas. My experience includes dozens of Jury trials, hundreds of non-jury trials, and I have counseled thousands of clients. Further, I have handled every type of case imaginable from shoplifting to Homicide. This extensive and varied set of experiences gives me a unique degree of preparation for the bench above and beyond my opponents. I have seen the worst and best of the justice system in the Public Defender's Office. I know where we need reform, and I have seen how good judges act.

Andy Szefti

Party: Dem,Rep
Biographical Info:
Campaign Email: info@andy4judge.com
Campaign Web Site: andy4judge.com
Education: University of Pittsburgh School of Law, J.D. 1999; University of Richmond, B.A. 1994
Qualifications for office: Incumbent Judge
Facebook: facebook.com/andy4judge
Twitter: facebook.com/andy4judge
District: 03



ANDY SZEFTI

campaignwebsite: andy4judge.com

Questions:
Q: Is gun violence best addressed as a public health and public safety issue or as a law enforcement issue?
A: Both, but primarily public health. Law enforcement officers can only enforce the laws on the books and their hands are often tied on that front. Law enforcement is a reactive approach whereas public health can be proactive. One advantage to approaching issues from the public health perspective is jurisdictional. We should provide local and state governments with the opportunity to fulfill their obligation to protect public health, safety and welfare, which create options beyond massaging the interpretation of the Second Amendment and the court decisions surrounding it.
Q: Describe your legal experience in the Civil, Criminal, Family and Orphans Division and why these qualify you to be a judge?
A: I have served as a judge since July of '22. I serve in the Civil Division which is where I spent the majority of my time practicing law. My duties are varied and include housing court, class action, and complex litigation cases.

Prior to becoming a judge, I served as County Solicitor for 10 years where I oversaw the County's legal matters relating to all divisions of the court. Prior to that, I spent 13 years of private practice focused on litigation and municipal matters.

It is experience and more that has served me well on the bench, and I hope to build upon it in coming years.

COUNTY CHIEF EXECUTIVE

Description: The County Executive enforces all County ordinances, represents the County in meetings with other elected officials and development organizations, approves or rejects County ordinances, is accountable for all departments except those under jurisdiction of another officer, prepares and submits fiscal plans, appoints the County Manager (with consent of Council), makes appointments to authorities and agencies, negotiates and signs contracts, calls special meetings of Council, makes an annual report to Council and other reports as Council may request.

DEMOCRATIC

Theresa Sciulli Colaizzi

Party: Dem
Biographical Info:
Campaign Phone: 412-973-8338
Campaign Email: There-saforACE@gmail.com
Education: Associate's Degree in Business and Political Science
Qualifications for office:—Private Business Owner for 30 years,—Served on the Pittsburgh Public School Board for 12 years,—Collaborated with nonprofits on behalf of the Children of Pittsburgh,—Negotiated 19 contracts with various unions



THERESA SCIULLI COLAIZZI

District: 07
term: 4
Questions:
Q: What are your top three priorities for this office?
A: —Public Health and Safety
—Invest in early childhood education and intervention
—Address Affordable Housing versus free housing
Q: What policies will you pursue to promote social and racial justice for all citizens?
A: Policies have to be created with many people at the table, the best way to answer this question is to bring good citizens to the table to work through the problems as soon as you identify them.
Q: The renewable energy industry is providing a significant increase in good jobs in PA. If elected, how will you use your elected position to continue this economic growth?
A: I am very proud of Josh Shapiro’s move to eliminate college requirements for certain jobs, and if elected, I plan on doing that. In the state, we have to encourage children that their 12-year education is enough to obtain jobs. The state has to invest more in education up to the 12th grade and mentoring programs.

Dave Fawcett

Party: Dem
Biographical Info:
Campaign Phone: 412-303-6153
Campaign Email: dfawcett@fawcett4countyexec.com
Campaign Web Site: www.fawcett4countyexec.com/
Education: B.A. Carnegie Mellon University, J.D. University of Pittsburgh School of Law
Qualifications for office: As a lifelong Pittsburgher, I have grappled with our region’s shortcoming of its true potential for decades. I believe I have unique qualifications for the position by virtue of my years of work pursuing justice as an attorney, as well as a former member of the Allegheny County Council. As a trial lawyer, I have managed large teams of lawyers through stressful, complex cases—once, all the way to the Supreme Court of the United States. I have successfully sued the County over conditions at the County Jail; I’ve taken on cases and obtained freedom for innocent people who were wrongfully convicted.
Facebook: www.facebook.com/profile.php?id=100088348796986
Twitter: twitter.com/DaveFawcett4ACE
District: 05
term: 4
Campaignwebsite: www.fawcett4countyexec.com



DAVE FAWCETT

Questions:
Q: What are your top three priorities for this office?
A: Job Growth: We need more Economic Development monies to offer what new manufacturers, and particularly hi-tech manufactures, want and need to locate here.
Sustainability: I will be a champion for the environment. We need to “think globally, and act locally” on climate change, and invest in transformative projects like a Countywide Riverfront Park, to capitalize on our advantages—our rivers, green hills and natural beauty..
Crime Reduction & Criminal Justice Reform: I will make substantial criminal justice reform and reduction of crime my highest priority.
Q: What policies will you pursue to promote social and racial justice for all citizens?

A: I would support fair housing initiatives, and demand the help of our large banks and corporations that played a large role in causing inequities. I would also devote all possible effort to increasing the commitment of our tax-exempt organizations to help provide funding and resources for early childhood education initiatives, as well as college expenses and tuition for our youth. And, I would demand much-needed criminal justice reform.
Q: The renewable energy industry is providing a significant increase in good jobs in PA. If elected, how will you use your elected position to continue this economic growth?
A: Renewable energy and manufacturing jobs are fast-growing industries across the rust belt. Allegheny County must capitalize on this, particularly by pursuing the use and manufacture of renewable energy (wind and solar) and urging citizens to reduce their carbon footprint.
Further, it will be impossible to attract innovation and economic development in the sustainability space without taking on our deep social equity issues—if we do, we can make Allegheny County the place where young people want to live as an Innovation Hub and a Beacon of Sustainability.

Sara Innamorato

Party: Dem
Biographical Info:
Campaign Phone: 443-567-8990
Campaign Email: hello@saraforall.com
Campaign Web Site: saraforall.com
Education: University of Pittsburgh, Bachelors in Business, Magna Cum Laude
Qualifications for office: Sara has introduced dozens of bills, leading the fight to increase the supply of affordable housing, raise the minimum wage, secure environmental protections, address the opioid epidemic, establish the first Office of New Pennsylvanians, create a Working Families Tax Credit, and protect reproductive healthcare. The 2022 session culminated with the passage of Sara’s landmark Whole Home Repairs legislation which will provide \$125M in critical funding to keep seniors and those facing housing insecurity in their homes while investing in climate resilience and local workforce development.
Facebook: https://www.facebook.com/SaraForPA
Twitter: https://twitter.com/Innamo
District: 02
term: 4
campaignwebsite: saraforall.com



SARA INNAMORATO

Questions:
Q: What are your top three priorities for this office?
A: The County Exec holds power over many issues that touch people’s lives and either create a foundation for shared wealth or reinforce disparity. My top priorities are (1) to ensure that everyone in Allegheny County has high-quality, safe, and affordable housing; (2) to build the tax base that values our working families and helps us shift to a clean economy; and (3) to improve our air and water quality, with a particular focus on our environmental justice communities. These three issues would address deep inequities in our county, build shared prosperity, and improve the lives of all residents.
Q: What policies will you pursue to promote social and racial justice for all citizens?

A: We cannot look at racial justice as an isolated issue—we need to address these issues in every aspect of County Government. Our work must focus on closing the racial wealth gap; addressing the Black infant and maternal mortality; reducing racial segregation of housing; cleaning up our air/water—starting EJ communities; expanding union rights; ending the racial imbalance in property tax assessments, home valuations, and mortgage lending; and reforming our criminal justice system to end the abuses at the Allegheny County Jail and breaking the school to prison pipeline.
Q: The renewable energy industry is providing a significant increase in good jobs in PA. If elected, how will you use your elected position to continue this economic growth?
A: A Just Transition requires that we reorient the economic development infrastructure of Allegheny County away from the large polluting industries towards a distributed set of emerging clean industries. Many of these industries are already in Allegheny County but they haven’t received the support from the government that polluting industries have. Until we change how federal and state money flows into our county and which industries are prioritized we cannot ensure a meaningful transition.

Our existing jobs in the service and care sectors are the fastest-growing job sectors here yet have the fewest job protections and some of the lowest wages. These sectors are just as important as what we traditionally view as “green” jobs. They are deeply important to quality of life, and they heavily employ Black and Brown workers—especially women of color. Raising the wage and making these good, family-sustaining jobs is just as important a part of a Just Transition.

Michael E. Lamb

Party: Dem
Biographical Info:
Campaign Phone: 319-471-7656
Campaign Email: info@lambforcountyexec.com
Campaign Web Site: www.lambforcountyexec.com/
Education: Bachelors from Penn State University, Master’s degree from Carnegie Mellon University, Juris Doctorate from Duquesne University’s School of Law.
Qualifications for office: I have a proven track record of bold progressive change, from my work in the Prothonotary’s office to my work as Controller, as a lawyer, and as a dedicated public servant. I have already built tools for better government at the city level that I can bring to the County on day one. I have a bold vision for our future and I know how to get it done. I will invest in us by making community college for every high school senior in the county. I will bring a new level of accountability and transparency to our government and I will build coordination and cooperation between our municipalities.
Facebook: facebook.com/MichaelLambPA
Twitter: https://twitter.com/MichaelLambPA
District: 04
term: 4
campaignwebsite: www.lambforcountyexec.com/



MICHAEL E. LAMB

Questions:
Q: What are your top three priorities for this office?
A: I will invest in us and make community college for every high school senior in the county, I will build co-

ordination and cooperation between our municipalities by creating an Office of Municipal Partnership to work on building affordable communities connected by good transportation in every municipality, and I will address public safety in the city and across the county by investing in public works, empower DHS to build a diversionary co-response related to mental health, addiction, and the unhoused population.

Q: What policies will you pursue to promote social and racial justice for all citizens?

A: People can look outside their windows and see blighted property, their neighbors pushed out of their homes, senior housing units fall into disrepair, and “affordable housing” communities disconnected from grocery stores, healthcare facilities, transportation, and the things that help a community thrive. Accessible and affordable transportation can be a lifeline for every community in Allegheny County to thrive. We need to expand the Eastern Busway and focus on transit-oriented development. I want to put the ability to own or rent a home back into the hands of the people. We have the tools, including land banks, stronger code enforcement, & a tax claim bureau to expedite the process of reintegrating properties into communities.

Q: The renewable energy industry is providing a significant increase in good jobs in PA. If elected, how will you use your elected position to continue this economic growth?

A: We need to go electric in every office and install alternative energy in every county facility and give every county employee a bus pass. The County Exec needs to set the tone for the future of the region. One of the most impactful ways we can create jobs is making sure we lower obstacles to higher education or certification. Free community college would be game changing. We can create certificates that will help our public works department find the personnel they need to build our green infrastructure. We could staff our Department of Health with people who have been trained to enforce environmental regulations. The reality is that we have jobs available here now—60% of job vacancies here in Allegheny County require some sort of certification and not a four year degree. We can fill that need right now and I plan to. And, through an Office of Municipal Partnership, we can help our communities build and invest in their own green projects.

William Parker

Party: Dem
Candidate did not respond

John K. Weinstein

Party: Dem
Biographical Info:
Campaign Phone: 412-969-8585
Campaign Email: info@weinstein4exec.com
Campaign Web Site: johnweinstein.org
Education: Robert Morris University, concentration in Business Administration & Management Mon-tour High School, member of Wall of Honor
Qualifications for office: 1999-Present, Allegheny County Treasurer
Facebook: <https://www.facebook.com/johnweinstein4exec>



JOHN K. WEINSTEIN

Twitter: <https://twitter.com/weinstein4exec>
District: 04
term: 4
campaignwebsite: johnweinstein.org

Questions:

Q: What are your top three priorities for this office?

A: My vision is a revitalized Allegheny County for all our children.

In the last few years, we’ve lost 50,000 jobs. We need to reinvent ourselves into a desirable region to live and work. I’ll start by doing everything possible to address public safety. We also need to prioritize fixing our crumbling infrastructure. We need to utilize every resource at our disposal—local, state, federal—to reinvest in the very arteries that keep our community moving. Those two issues build into my third: job creation. We need someone who can bring everyone to the table and create opportunities for everyone.

Q: What policies will you pursue to promote social and racial justice for all citizens?

A: In my time as a public servant, one philosophy has always guided me: no matter who you are, what you believe, or whom you love, you’re due the finest services. Every resident deserves to be seen and to be heard. My priority is to ensure fair systems that account for individual circumstances, and treat people with the respect that they inherently deserve. I want to clean up our air quality; I want to improve the conditions at our Jail; I want to bring in experts and community leaders to improve policing standards; and I want to bring all to the table to build opportunities for everyone no matter who you are or where you are.

Q: The renewable energy industry is providing a significant increase in good jobs in PA. If elected, how will you use your elected position to continue this economic growth?

A: Pittsburgh was long known for its smog. We’ve come a long way, and are now recognized for our educational, medical, and technology resources. We’ve proven that we can be a leader in emerging sectors; we’ve proven that we have the home-grown talent to make that happen. We need to keep those resources and that talent right here, and we can do that. I intend to bring stakeholders together in order to ensure this is a livable, desirable region that can not just retain but attract the talent necessary to bolster these booming industries.

REPUBLICAN

Joseph E. Rockey

Party: Rep
Biographical Info:
Campaign Phone: 412-855-2676
Campaign Email: info@voterockey.com
Campaign Web Site: www.voterockey.com
Education: Bachelor of Science, Duquesne University
Qualifications for office: Lifetime of private sector business experience, including chief risk officer for fifth-largest U.S. financial institution, as well as board memberships with several social service organizations.
Facebook: <https://www.facebook.com/profile.php?id=100089118441204>
District: 02
term: 4



JOSEPH E. ROCKEY

Questions:

Q: What are your top three priorities for this office?

A: To bring commonsense solutions to the financial and economic challenges that have cost Allegheny County jobs over the past five years. To encourage economic growth by encouraging new and existing businesses and industries to make their home in Allegheny County. To address the growing problems of crime and homelessness by efficiently delivering public services while providing the kinds of family-sustaining jobs needed to encourage productive citizenship.

Q: What policies will you pursue to promote social and racial justice for all citizens?

A: A vibrant, private-sector economy with good jobs becomes the foundation for equity and inclusion. Allegheny County’s Black middle class is shockingly small and without economic advancement, minority communities cannot advance—the greatest injustice of all. A Rocky administration will focus economic investment into communities that have historically been left behind.

Q: The renewable energy industry is providing a significant increase in good jobs in PA. If elected, how will you use your elected position to continue this economic growth?

A: A Joe Rockey administration would favor an “all-of-the-above” menu of energy options. I support the continuation and expansion of renewable energy in Allegheny County and the jobs that it creates. During a Rockey administration, we will continue to invest in the expansion of renewable energy in the county and beyond.

COUNTY CONTROLLER

(Vote for one)

Description: General supervision and control of county fiscal matters. Must pass on validity of all claims against the county.

Term of office: 4 years **Salary:** \$110,372

DEMOCRATIC

Darwin Leuba

Party: Dem
Biographical Info:
Campaign Phone: 412-572-1688
Campaign Email: darwinforcontroller@gmail.com
Campaign Web Site: www.DarwinForController.com
Education: BS Computer Science from Yale University, Fox Chapel Area High School
Qualifications for office: For 5+ years, I’ve served as O’Hara Township’s elected Auditor, the municipal equivalent of County Controller. I’m the only candidate in this race refusing contributions from county contractors or corporate PACs, and that’s important because the Controller is tasked with enforcing contracts and auditing corporate tax incentives. Candidates who accept money from the entities they audit assume a tremendous conflict of interest.
Facebook: <https://www.facebook.com/darwinforcontroller/>
Twitter: <https://twitter.com/darwinleuba>
campaignwebsite: <https://www.darwinforcontroller.com/>



DARWIN LEUBA

Questions:

Q: What are your top three priorities for this office?

A: Last year, I exposed \$32 million of UPMC corporate’s untaxed private parking lots. I’d expand this tax exemption audit to all so-called “nonprofit” and corporate properties countywide. I’d also enforce jail contracts to curtail deaths and reduce staff overtime costs, which skyrocketed to \$9.7 million last year. Our jail has a per capita death rate that is twice the national average due to a lack of contract enforcement. I’d also audit the Health Department’s air quality enforcement to make sure penalties effectively discourage pollution and ensure the Clean Air Fund benefits impacted areas.

Q: Every elected office has obstacles that make it hard to accomplish its mission and responsibilities. What obstacle do you plan to work to remove if elected?

A: Transparency is critical to good government, but locally, the County often refuses to release information without a court order. Even the current County Controller wrongfully denied 13 of my Right-To-Know-Law (RTKL) requests last year. I appealed his denials to the statewide tribunal and won all 13 cases which forced him to release jail contractor compliance records; however, the appeals process delays transparency and wastes the county’s limited legal resources. To address a lack of transparency, I would use the office’s statutory authority to publish information instead of shielding it.

Q: What policy changes would you recommend to improve police accountability?

A: The county should offer at-cost police services to cash-strapped municipalities, similar to how it provided police patrols to Wilmerding for five years until 2022. Many municipalities with shrinking populations do not have the funds to hire and oversee their own police departments, and the county could more cost-effectively provide policing with greater accountability. County police would also have greater oversight from the Controller, County Council, and our new Independent Police Review Board. However, police consolidation does not address the reality that our current system of policing is not designed to hold itself accountable. Even well-intentioned efforts such as body cameras do not address issues with state law. While advocating for changes to use-of-force laws and other statutes in Harrisburg, we also need to locally address poverty, homelessness, addiction, and mental health to reduce the demand for armed police officers in the first place.

Corey O’Connor

Party: Dem
Biographical Info:
Campaign Email: info@coreyoconnorpa.com
Campaign Web Site: coreyoconnorpa.com
Education: B.A., Duquesne University
Qualifications for office: Allegheny County Controller, 2022 - Present / Pittsburgh City Council Member, District 5, 2012-2022

Facebook: www.facebook.com/coreyoconnorpa
Twitter: www.twitter.com/CoreyOConnorPA
campaignwebsite: coreyoconnorpa.com



COREY O’CONNER

Questions:

Q: What are your top three priorities for this office?

A: 1. Regaining public trust in County government through increased transparency and enhanced oversight of public finances

2. Bringing accountability to the Allegheny County Jail and protecting the rights of incarcerated individuals

3. Pushing the County to prioritize sustainability in budgeting and long range planning and using our powers of oversight to make sure that we’re actually on

track to reaching goals.

Q: Every elected office has obstacles that make it hard to accomplish its mission and responsibilities. What obstacle do you plan to work to remove if elected?

A: Two obstacles I’ve discovered are lack of awareness of the Controller’s responsibilities and a perception that this role is used exclusively to score political points. I am working hard to make the office more visible by conducting community forums and am working to pass reforms and push for greater transparency in local government. One obstacle I’m working to remove is the difficulty accessing basic information. This is why my office has been focused on putting the information we collect online and making it as easy as possible to access. You can visit some of our new data dashboards here.

Q: What policy changes would you recommend to improve police accountability?

A: Current state law makes holding police accountable very difficult. In the absence of new legislation, one way my office can work on this issue is to solicit community feedback on issues relating to discipline and responsibility from the most over-policed communities when negotiating new police contracts. Another way my office is approaching this issue is through improved data collection. Specifically, Our office has begun the process of reaching out to local law enforcement stakeholders to investigate their policies and procedures around how bias motivated incidents, including those against Black people and LGBTQ individuals are tracked. Each jurisdiction has its own system for tracking incidents and until collection procedures are standardized it’s impossible to have a complete understanding of the scale of this problem.

DISTRICT ATTORNEY

Description: Prosecutes all criminal cases in Court of Common Pleas. Prepares criminal information, requests and conducts investigative grand juries, prepares cases for court.

Salary: \$196,119 **Term:** 4 years

DEMOCRATIC

Matt Dugan

Party: Dem
Biographical Info:
Campaign Phone: 443-742-3093
Campaign Email: info@duganforda.com
Campaign Web Site: www.duganforda.com
Education: Matt is a graduate of the Duquesne University School of Law where he received the CALI Award for excellence in Trial Advocacy and earned his bachelor’s degree from Villanova University.

Qualifications for office: Matt Dugan was appointed Chief Public Defender of Allegheny County in Jan 2020 after serving as Acting Chief Public Defender since May 2019. Mr. Dugan began his career with the Public Defender’s Office in 2007 as a trial attorney. In 2013 he was promoted to the position of trial manager & became Deputy of the Pre-Trial Division in 2016. Beginning in 2018 he assumed the role of Chief Deputy Director. Matt has spent his career in the Public Defender’s Office & has implemented several transformational projects cementing that office’s leadership role in criminal justice reform in Allegheny County.

Facebook: https://www.facebook.com/DuganforDA

Twitter: https://twitter.com/MattDugan4DA



MATT DUGAN

campaignwebsite: www.duganforda.com

Questions:

Q: What are your top three priorities for this office?

A: 1) establish a conviction integrity unit 2) develop a robust training program for attorneys and staff 3) put more people into true diversionary programs

Q: What policies will you pursue to promote social and racial justice for all citizens?

A: The District Attorney’s Office must acknowledge the significant racial disparities in our criminal justice system, and must actively work to eradicate those disparities with every decision and policy it implements. We must build a system that works for all members of our community.

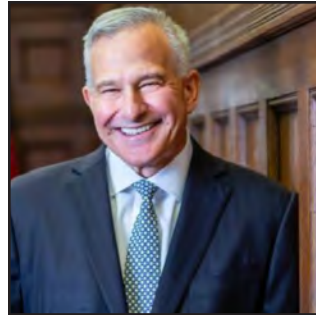
Q: What policy changes would you recommend to improve police accountability?

A: There must be an open dialogue between the DA’s office & every police dept in the County. Police must understand the important role the public has in keeping neighborhoods safe; including the need to partner with, support, & lift up community groups invested in violence prevention.

We must strengthen police-community relationships & hold police accountable when they break the law. Allegheny County is unique with 132 police depts. The City of Pittsburgh represents only ? of the County’s population, with the remaining ? living in suburban & rural areas. Each municipality outside the City of Pittsburgh has a unique relationship with their police force. Each dept is staffed differently & has disparate funding/training/resources so we have communities who are over/under/correctly policed. So it is imperative to have a visible & vocal leader in the DA’s Office who will make clear to these depts what standards are expected and what the consequences will be when if they fall short of those.

Steve Zappala

Party: Dem
Biographical Info:
Campaign Phone: 412-215-1482
Campaign Email: campaign@stevezappala.com
Campaign Web Site: stevezappala.com
Education: B.A., University of Pittsburgh, J.D., Duquesne University School of Law
Qualifications for office: District Attorney since 1998
Facebook: https://www.facebook.com/DASteveZappala
Twitter: @stevezappala
campaignwebsite: stevezappala.com



STEVE ZAPPALA

Questions:

Q: What are your top three priorities for this office?

A: Addressing the crises of mental health and addiction are top priorities of mine. We created courts to ensure that individuals receive treatment instead of jail. These issues intertwine with my other top priority, reducing violent crime.

Q: What policies will you pursue to promote social and racial justice for all citizens?

A: We are addressing issues that disproportionately affect people of color and other marginalized communities. Steps we have taken are special courts that address mental health and addiction, and the Phoenix Court, which addresses relatively minor, non-violent offenses. The goal of these courts is to allow people to receive treatment rather than incarceration.

Our office provides training to all employees to ensure

they are sensitive to any biases they may have to ensure that it does not impact the cases they handle.

Q: What policy changes would you recommend to improve police accountability?

A: I was proud to secure funding for body cameras for police in Allegheny County. I am even more proud that I have convinced nearly every police agency in Allegheny County to utilize them in an effort to gather the best evidence possible when there is an allegation of police misconduct or brutality.

COUNTY TREASURER

(Vote for One)

Description: Collects taxes and other money due the county. Keeps daily accounts and must report daily to the controller all money paid out.

Salary: \$110,372

Term: 4 years

DEMOCRATIC

Erica Rocchi Brusselars

Party: Dem
Biographical Info: [ericaforttreasurer.com](https://www.ericaforttreasurer.com)

Twitter: @erica4treasurer
Facebook: <https://www.facebook.com/Erica4Treasurer>

Qualifications for office: Erica Rocchi Brusselars has extensive professional experience as a consulting pension actuary, having worked at a global firm (now Willis Towers Watson) for 14 years. Prior to that she spent two years as a middle school math teacher in an under-resourced public school. More recently she volunteered with the Abolitionist Law Center, setting up their volunteer remote courtwatch program in Pittsburgh.

Education: B.S. in Mathematics, Carnegie Mellon University '98; M.S., University of Mississippi '00

Campaign Web Site: [ericaforttreasurer.com](https://www.ericaforttreasurer.com)

Campaign Email: acbenenson@ericaforttreasurer.com

Campaign Phone: 3012040075

Questions:

Q: What are your top three priorities for this office?

A: I'm uniquely qualified to bring active, independent leadership to the County Treasurer's Office. My first priority is to build confidence and capacity in the office by leading with a focus on transparency, modernization, and collaboration. Second, I'll shine a light on our County's Retirement Plan funding to ensure it is sustainably funded in the long term. With my experience as a pension actuary, I have the expertise needed to lead this conversation. Finally, I will ensure our money is invested prudently. Actuaries are trained to understand, quantify, and navigate risk to ensure we're thoughtfully investing our funds

Q: The renewable energy industry is providing a significant increase in good jobs in PA. If elected, how will you use your elected position to continue this economic growth?

A: We see the growth of renewable energy in our region in many different ways. The Treasurer's Office has assisted county departments in connecting renewable-energy grant money to residents by playing a part in the record-keeping and billing function. The Treasurer's Office can continue to be and expand its function as a conduit



ERICA ROCCHI BRUSSELARS

for such programming. Our Office's collaborative nature will foster and create discussions as to other ways the office can play a role.

Q: What policies will you pursue to promote social and racial justice for all citizens?

A: Alongside the amplification of BIPOC voices from within the Treasurer's Office, I plan to implement anti-racist training as well. I have a personal commitment to undoing racist and white-supremacist structures in our world. I believe the first step is to continuously, purposefully examine and undo those structures in one's own life.

In terms of policy, we are interested in pursuing options that move the enforcement and collection of delinquent and defaulted accounts in a way that serves those individuals struggling financially to pay their taxes. We'll be working to develop a portfolio of policies that'll work toward equity and compassion while upholding the financial duties of the Office.

Outside of its direct responsibilities, I see this position as one of a countywide leader. I'll use the platform to highlight critical issues I'm passionate about: needed improvements of Allegheny County Jail and a need to provide more robust critical services to our most vulnerable communities.

Anthony Coghill

Party: Dem
Biographical Info: <https://twitter.com/Coghill4Treas>

Facebook: <https://www.facebook.com/Anthony-CoghillforTreasurer>

Qualifications for office: Pittsburgh City Council: 2017-Present Business Owner, Coghill Roofing Company: 1994-Present Treasurer: Sports and Exhibition Authority (SEA): 2020-Present SEA Board Member 2017-Present 19th Democratic Ward Chair: 2014-2022

Education: Brashear High School

Campaign Web Site: www.anthonycoghill.com

Campaign Email: grant@anthonycoghill.com

Campaign Phone: 4123763631

Questions:

Q: What are your top three priorities for this office?

A: 1) The Pension Fund

2) A Focus on Modernization

3) Consistent Transparency

Q: The renewable energy industry is providing a significant increase in good jobs in PA. If elected, how will you use your elected position to continue this economic growth?

A: The Allegheny County treasurer manages funds with a focus on risk and return. Whether social or environmental goals should be considered is a matter of policy and values. A balanced approach that considers financial returns, community values, and policy objectives can generate positive outcomes. A socially and environmentally conscious investment strategy can contribute to positive change and benefit economic development. Clear guidelines and criteria for investment decisions must be established to achieve a balanced approach. By finding the intersection of policy, values, and profit maximization, the treasurer can develop a responsible investment strategy that benefits the county and its residents.

Q: What policies will you pursue to promote social and racial justice for all citizens?

A: Tax Payer Protection:

Small businesses, black and brown residents, seniors, and low-income residents are all at risk of unfair collection and malicious scammers. As Treasurer, Anthony will ensure every taxpayer's sensitive information is guarded with



ANTHONY COGHILL

the highest level of security, fairness, and honesty. These are the principles that have guided his service to date and these are the principles he brings to the office of the Treasurer.

COUNTY COUNCIL AT-LARGE

(Vote for One)

Description: Initiates and adopts ordinances, makes appropriations, adopts annual balanced budget, adopts an administrative code, approves Executive appointments, conducts investigations of County Departments, accepts grants, gifts or donations on behalf of County, may modify or eliminate departments, agencies or functions that no longer serve citizens.

Salary: \$10,939 stipend.

Term: 4 years

DEMOCRATIC

(Vote for One)

Joanna Doven

Party: Dem
Biographical Info: **Campaign Phone:** 724-420-0870

Facebook: <https://www.facebook.com/votedoven/>

Qualifications for office: 20+ years of professional experience in both public and private sector; Single mother who understands the difficulties working families face; Small business owner

Campaign Web Site: www.votedoven.org

Campaign Email: joanna@votedoven.org

Education: Master of Public Management, Carnegie Mellon

campaignwebsite: www.votedoven.org



JOANNA DOVEN

Questions:

Q: What are your top three priorities for this office?

A: My core issue is mental health and related public safety and substance use disorders. Mental health is at the core of the greatest problems all neighborhoods face. In fact, 90% of those suffering from substance use disorder have at least one underlying mental health disorder. Nearly one-billion-dollars are funneled into county government to support health and human services—such as mental health. And post-Covid, mental health is now the number one comorbidity. How can we leverage this funding to help more people?

We need to build historic partnerships that leverage these county funds with

Q: What policies will you pursue to promote social and racial justice for all citizens?

A: As a single-mother of three children and small business owner, I know it's critical we promote diversity and inclusion to ensure all individuals have equal opportunity for employment, housing, and other aspects of life regardless of their race, gender, ethnicity or other characteristics.

To promote social and racial justice we must increase funding for education, which is critical to addressing disparities in educational outcomes. I would support policies that prioritize equity in access to early childhood education, K-12 education and higher education focused on skills development and workforce

Q: What policy changes would you recommend to improve police accountability?

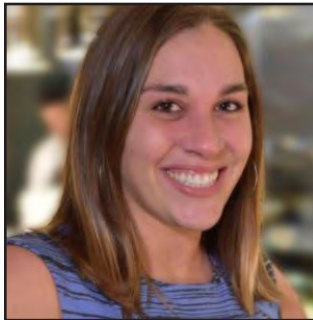
A: Improving police accountability is a complex issue that requires a multifaceted approach and collaboration between law enforcement and community. To start, I firmly believe we must increase funding for mental health and social services. Many police encounters involve individuals experiencing mental health crises or substance abuse issues. By increasing funding for mental health and social services, police officers can be more available to focus on crime prevention and other law enforcement necessities.

I also believe we must provide police officers support with improving training mechanisms and hiring practices. By investing in training for de-escalation techniques and implicit bias, we're investing in preventive measures to ensure communities are safe and law enforcement can focus on their work.

Lastly, we must increase the use of body cameras. Body cameras can provide an objective record of police interactions within the community, which can be used to help with building trust

Bethany Hallam

Party: Dem
Biographical Info:
Facebook: BethanyPGH
Campaign Web Site: bethanyhallam.com
Campaign Email: bethanyhallampgh@gmail.com
Education: Duquesne University, bachelor's degree in Public Relations. Currently attending Duquesne Law School.
Twitter: BethanyHallam
campaignwebsite: bethanyhallam.com



BETHANY HALLAM

Questions:

Q: What are your top three priorities for this office?

A: What are your top three priorities for this office?

—Funding services that help us: we should expect more from our government and I will continue to push our County budget to fund services that will help our residents

—Housing + Transportation: We need to support more housing to make our region as affordable as possible for everyone, and make PRT more accessible and reliable.

—Environment: We banned fracking in county parks, but can expand that ban to include the rest of the county.

Q: What policies will you pursue to promote social and racial justice for all citizens?

A: Intersectionality is at the core of my work on council. Whether I'm looking at environmental issues, negotiating a budget, sitting on the Jail Oversight Board, or on the Board of Elections, I consider how policy will impact different groups of people & who may need extra support to mitigate prior harm or disadvantages. The residents of Allegheny County have a diverse range of needs, so I work hard to make sure everyone has a seat at the table. Beyond that, I work to make sure I am proactively reaching out to communities and areas that may not be as likely to engage with their elected leaders.

Q: What policy changes would you recommend to improve police accountability?

A: Nearly every social issue has fallen to the criminal punishment system—and as a result, to police to address. However, they neither have the tools nor the resources to actually tackle those issues. Mental health & substance use disorders, housing instability, community & familial violence are all matters that are primarily dealt with through policing, often leading to counterproductive and destructive results. We need to shift that undertaking to experts who know how to handle folks in these most vulnerable situations, not escalate the situa-

tions by involving armed law enforcement officers. policing, often leading to counterproductive and destructive results. We need to shift that undertaking to experts who know how to handle folks in these most vulnerable situations, not escalate the situations by involving

REPUBLICAN

Sam DeMarco

Candidate did not respond.

COUNTY COUNCIL DISTRICT 2

(Vote for One)

Description: Initiates and adopts ordinances, makes appropriations, adopts annual balanced budget, adopts an administrative code, approves Executive appointments, conducts investigations of County Departments, accepts grants, gifts or donations on behalf of County, may modify or eliminate departments, agencies or functions that no longer serve citizens.

Salary: \$10,939 Stipend

DEMOCRATIC

Todd Hamer

Biographical Info:
Campaign Phone: 571-438-2976
Campaign Email: ?tod-d4alleghenycounty@?yahoo.com
Education: BS Penn St/ MEd. Virginia Commonwealth Univ.
Qualifications for office: Current member of Sewickley Council



TODD HAMER

Questions:

Q: What are your top three priorities for the office?

A: Every decision I make

with keep our future generations in mind. I believe all children deserve these three things.

1. A clean safe school.

2. A clean safe community center.

3. A clean safe park.

Clearly, this shows my top priorities are not us, but our future generation. I cannot stress enough how environmental issues, education, and safety are the most important issues we face.

As the richest country in the history of the world there is no reason we cannot make our world better for the future generations.

Q: What policies will you pursue to promote social and racial justice for all citizens?

A: Social and racial justice are two issues I care deeply about. We must change how we deal with low level crimes. This includes, yet is not limited to increased spending on mental health, education, and the environment.

In addition to this we must make all decisions knowing that representation matters.

Q: The renewable energy industry is providing a significant increase in good jobs in PA. If elected, how will you use your elected position to continue this economic growth?

A: The beauty with this industry is that it is moving forward with or without us. The market is there to help renewables grow. My job is to listen to the industry and see where we as a county can empower renewables to grow as an industry.

I am far from an expert on this industry, yet owning my own ignorance on this industry gives me the opportunity to listen and grow with this industry.

Q: What action, if any, would you support to improve air quality in Western Pennsylvania?

A: Each morning I listen to NPR and hear the air quality data. It disturbs me that we still deal with this issue. We cannot continue to pollute our air and allow industry a free pass. We must hold companies that pollute our region accountable.

We must learn from the past and see how many boom and bust industries have polluted our region and left us with their remains. Take a walk through the Mon Valley and the amount of waste from energy companies of the past is disturbing. We must not allow this to occur again.

I will have no problem holding those who ruin our environment accountable for their actions.

REPUBLICAN

Suzanne Filiaggi

Party: Rep
Biographical Info:
Campaign Email: suzanne4cc@gmail.com
Education: Washington & Jefferson College, Duquesne University, Thomas R. Kline School of Law
Qualifications for office: Small Business Owner/ Attorney/Board and Legislative Experience
Facebook: TBA
Twitter: FriendsOfSuzanne@SuzanneFiliaggi
District: 02
campaignwebsite: TBA



SUZANNE FILIAGGI

Questions:

Q: What are your top three priorities for the office?

A: I sit on the Special Committee on Assessment Practices. I commit to a thorough examination of the standards and practices of property taxation and will advocate for reassessments every 3 years creating a more fair housing environment within the County to attract both residents and businesses.

North Park is the largest in our park system. It is the crown jewel of Dist 2. I pledge to preserve its Beauty and encourage public-private partnerships to increase accessibility and experiential value.

I will employ a Bi-Partisan approach to create ethical and professional standards within Council.

Q: What policies will you pursue to promote social and racial justice for all citizens?

A: Our county has numerous policies already in place to promote social and racial justice. I pledge to ensure that county hiring practices and contract awards are adhering to the mandates set forth in the MWDBE program. These guidelines exist to create effective methods that strengthen economic opportunities for Minority, Women, and Disadvantaged business enterprises. Regular audits of our various County agencies and Departments will expose potential violations and allow for greater transparency thus establishing more equal access to economic justice and prosperity for all residents.

Q: The renewable energy industry is providing a significant increase in good jobs in PA. If elected, how will you use your elected position to continue this economic growth?

A: Sustainability initiatives are at the forefront of most government bodies. Allegheny County is no different and it sits uniquely at the epicenter of an energy econ-

my that has created thousands of jobs and generated billions of dollars in commerce. Renewable energy is an increasing piece of that energy output. The County's implementation of the C-PACE Program is a significant commitment to that end. Projects like Mill 19 and the Gaucho Solar wind farm near the Airport are great examples of the potential that solar electric generation has in our region. Hydroelectric power is also a viable path for clean energy as Allegheny County is surrounded by 3 rivers. Harnessing hydroelectric power is a natural fit for this area. The County supports the effort by entering into a Power Purchasing Agreement to buy renewable electricity from a hydroelectricity plant located on the Ohio River. I will work with my colleagues to continue supporting our local economy and growing clean energy jobs.

Q: What action, if any, would you support to improve air quality in Western Pennsylvania?

A: As the seated Member of Council in Dist. 2, I have already supported several Air Quality initiatives on behalf of residents of Allegheny County and Western Pennsylvania. I am a member of the Committee of Health & Human Services and have participated in all of the regular and informational meetings designed to educate Council and the Community on the state of the County's Environmental and Air Quality. I am familiar with the serious issues surrounding the Episodic rule and the impact of air inversions on pollution output. I have voted affirmatively, along with my Democratic colleagues on Council, to support 12633-23, a Motion urging the USEPA to revise its standard for fine particulate matter from 12 micrograms per cubic meter to 9-10. I have also approved 12553-23, an Ordinance ratifying an amendment addressing "Control of VOC Emissions" to the ACHD Rules and Regulations. If elected, I will continue to take a fiscally responsible and balanced approach to air quality legislation.

COUNTY COUNCIL DISTRICT 5

(Vote for One)

Description: Initiates and adopts ordinances, makes appropriations, adopts annual balanced budget, adopts an administrative code, approves Executive appointments, conducts investigations of County Departments, accepts grants, gifts or donations on behalf of County, may modify or eliminate departments, agencies or functions that no longer serve citizens.

Salary: \$10,939 Stipend.

Term: 4 years

DEMOCRAT

Dan Grzybek

Biographical Info:

Twitter: https://twitter.com/Dan_Grzybek

Qualifications for office: Engineer on Nuclear Reactor Safety Systems for US Naval Aircraft Carriers; Bethel Park School Director; Vice Chair of Bethel Park Democratic Committee; Emergency Substitute Teacher in Bethel Park; Youth Mentor at South Hills Interfaith Movement and Navy Seaperch program

Campaign Web Site: dan4district5.com/

Campaign Email: info@dan4district5.com

Education: Bachelor's degree in Chemical Engineering from the University of Pittsburgh; Master's



DAN GRZYBEK

degree in Interdisciplinary Engineering from Purdue University

Facebook: <https://www.facebook.com/DanGrzybek-District>

campaignwebsite: <https://dan4district5.com/>

Questions:

Q: What are your top three priorities for the office?

A: 1. Improve our local air quality - Allegheny County has the 14th worst air quality in the country as it pertains to particulate matter and is in the top 1% for cancer risk from large industrial sources.

2. Reform the Allegheny County Jail (ACJ) - There are unacceptable human rights abuses occurring within the ACJ. We need new leadership so that people (most who have not been convicted of a crime) are treated humanely and so that tax dollars are not being wasted.

3. Take advantage of federal funding (CHIPS Act, IRA, etc.) to bring good jobs to Allegheny County in areas like renewable energy.

Q: What policies will you pursue to promote social and racial justice for all citizens?

A: Despite making up only 13% of the local population, roughly 67% of the population at the ACJ is Black. Similarly, over 40% of Clairton is Black, and the median income is only \$37,000. Issues like air quality and inhumane carceral treatment disproportionately impact people of color and the economically disadvantaged. If elected, I will fight to end our practice of forced, unpaid labor (slavery) within the ACJ, and will work to ensure that our worst polluters are adhering to their Article XXI and Title V air pollution limits and are being held accountable when they are not.

Q: The renewable energy industry is providing a significant increase in good jobs in PA. If elected, how will you use your elected position to continue this economic growth?

A: As I previously mentioned, bringing jobs to Allegheny County in areas like renewable energy and clean technology is one of my top priorities.

I believe that the best way for County Council to facilitate this is by ensuring the county has the skilled workforce necessary to fill these jobs. There is a national shortage in skilled trades positions like electricians and welders. If elected, I will advocate for increased funding for jobs programs in these areas, especially in our traditionally underserved communities who are often left out of the conversation. One fantastic resource we already have which deserves more funding is CCAC, who offers some extremely valuable apprentice programs and whose West Hills Center is a premier training facility for skilled and technical trades careers.

Q: What action, if any, would you support to improve air quality in Western Pennsylvania?

A: Improving the air quality in Western Pennsylvania is my #1 priority. I believe that every resident in Allegheny County deserves clean air. We shouldn't have to worry about our children going outside at recess because it's difficult for them to breathe.

As a former Operations Manager at US Steel Clairton, I understand that for many large corporations, the pollution they produce is simply viewed as the cost of doing business. I support increasing the penalties on the county's worst polluters for sacrificing our health, and I believe that we must ensure that the Allegheny County Clean Air funds obtained from these fines are utilized in a manner which maximizes our local air quality. In order to do so, County Council must push to adequately fund the county's air quality program. Additionally, I believe the Mon Valley Episode Rule must be analyzed to guarantee that those facilities included are taking the steps necessary to mitigate pollution on air quality warning days.

REPUBLICAN

Mike Embrescia

Candidate did not respond.

COUNTY COUNCIL DISTRICT 06

(Vote for One)

Description: Initiates and adopts ordinances, makes appropriations, adopts annual balanced budget, adopts an administrative code, approves Executive appointments, conducts investigations of County Departments, accepts grants, gifts or donations on behalf of County, may modify or eliminate departments, agencies or functions that no longer serve citizens.

Salary: \$10,939 Stipend. **Term:** 4 years

DEMOCRATIC

John F. Palmiere

Party: Dem

Biographical Info:

Campaign Email: peopleforpalmiere@gmail.com

Qualifications for office: Incumbent Member of Council—Small Business Owner for over 40 years

District: 06

term: 4



JOHN F. PALMIERE

Questions:

Q: What are your top three priorities for the office?

A: My first priority is to continue to make County Council relevant and an equal partner with the County Executive to govern Allegheny County. My second priority is to keep a balanced budget that is responsible to the taxpayers of Allegheny County which provides the services that all the residents need. My third priority is maintaining and growing a County parks system that is vibrant and accessible for all of our citizens.

Q: What policies will you pursue to promote social and racial justice for all citizens?

A: Allegheny County Council passes an annual budget of over \$3 Billion dollars that allocates many resources to promote social and racial justice, which ensure that all citizens are afforded an equal shot. The 2023 Budget allocates more resources for our Public Defender's Office so that citizens of lesser means can receive the best representation. Also, The Department of Human Services leverages a small amount of County tax dollars in order to tap into a large sum of Federal and State dollars which promote social and racial justice through programs aimed at those who have been marginalized.

Q: The renewable energy industry is providing a significant increase in good jobs in PA. If elected, how will you use your elected position to continue this economic growth?

A: When Allegheny County bids a contract, we ensure that green initiative standards are included in that bid in order to emphasize and commit to the importance of renewable energy. As a member of the Public Works Committee, I will continue to push for projects that support good jobs and further our priorities in this space.

Q: What action, if any, would you support to improve air quality in Western Pennsylvania?

A: Allegheny County Council has a powerful say in

improving the air quality in Western Pennsylvania through the funding of the County Health Department. The Health Department has taken many strides to improve air quality in my time on Council. While the improvements are ever changing, I will continue to give the resources necessary to the Health Department in order to accomplish the best air quality for the citizens of Allegheny County.

REPUBLICAN

No candidate filed

COUNTY COUNCIL DISTRICT 07

Description: Initiates and adopts ordinances, makes appropriations, adopts annual balanced budget, adopts an administrative code, approves Executive appointments, conducts investigations of County Departments, accepts grants, gifts or donations on behalf of County, may modify or eliminate departments, agencies or functions that no longer serve citizens.
Salary: \$10,939 Stipend. **Term:** 4 years

DEMOCRATIC

Nick Futules

Candidate did not respond

COUNTY COUNCIL DISTRICT 10

Description: Initiates and adopts ordinances, makes appropriations, adopts annual balanced budget, adopts an administrative code, approves Executive appointments, conducts investigations of County Departments, accepts grants, gifts or donations on behalf of County, may modify or eliminate departments, agencies or functions that no longer serve citizens.
Salary: \$10,939 Stipend. **Term:** 4 years

DEMOCRATIC

Eric S. Smith

Party: Dem
Biographical Info:
Education: BA Political Science Point Park University
Facebook: electericssmith@aol.com
Qualifications for office: City of Pittsburgh Finance Department Auditor/ Treasurer of the Democratic Committee of the 13 Ward for 8 years
campaign website: electericssmith@aol.com
Campaign Email: smith-family00@aol.com
Campaign Web Site: electericssmith@aol.com
Campaign Phone: 4129253202



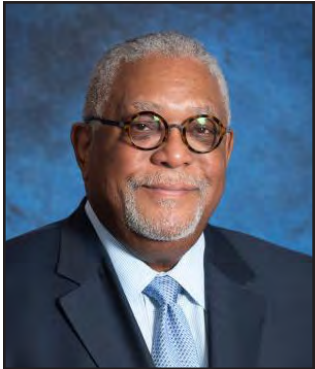
ERIC S. SMITH

Questions:
Q: What are your top three priorities for the office?
A: The Mental Health Crisis- We have to address the problems with individual who have mental Health is-

sues and get them the help that they need and educate the community in regards to what mental health looks like and how to address the problems in our schools and our community for safety reasons and for a heathier community.
Public Safety—We need a strong county police department and safe communities. That will happen when we have more Police officers trained in Mental Health and more offices on our streets to assist with keeping the public safe.
And County Assessments—We need a fair tax base.
Q: What policies will you pursue to promote social and racial justice for all citizens?
A: Policies that keep diversity in the full focus of employment opportunities and housing in our communities. We need trainings introduced in our Police department that promote social and racial justice. Mental health training and also mental health evaluations when we hire officers to our Police Dept as well. All of our citizens should be included in the process of how County Council governs the county. County Council should post on the County website all policies in place that promote social and racial justice for everyone and have a whistle blower contact phone number to report any misconduct.
Q: The renewable energy industry is providing a significant increase in good jobs in PA. If elected, how will you use your elected position to continue this economic growth?
A: I would continue to work with the other members on County Council, both democrats and Republican. I would ensure that legislation that is passed on County council that is safe for the environment in regards to renewable energy. I would ensure that the job growth includes recent college graduate from our County and individuals from surrounding neighborhoods throughout Allegheny County. I would invest my time and resources in continuing to foster job growth and informing Allegheny county residence of the job opportunities in the energy industry. As a councilman I would provide information to the public on were training is available for the energy jobs as well. I would also hold the energy companies accountable for their hiring practices and promote a supportive environment between energy labor and Allegheny County council.
Q: What action, if any, would you support to improve air quality in Western Pennsylvania?
A: I would introduce legislation that would protected the region from companies that harmed the environment especially the quality of the air. My role on county council, would be to follow up with the county executive, the state officials and the federal government to ensure that all environmental companies are following the rules and regulations in regards to the environment in Western Pennsylvania.

DeWitt Walton

Party: Dem
Biographical Info:
Campaign Email: ebonyguy@verizon.net
Campaign Phone: 412-418-5244
Questions:
Q: What are your top three priorities for the office?
A: To have a county that has a more robust economy, one that has diverse, equitable and inclusive employment and leadership opportunities. I also want to improve educational outcomes because



DEWITT WALTON

that will result in improvements in the quality of life.
Q: What policies will you pursue to promote social and racial justice for all citizens?
A: I will continue to invest in practices that will result in a cleaner environment, expand educational support for early childhood education, Pre K and afterschool programs that will result in improved life outcomes. I will also continue to support workforce development programs that demonstrate success in raising per-capita incomes in disadvantaged populations. I will support projects that reduce pollution and increase utilization of renewable sources of energy.
Q: The renewable energy industry is providing a significant increase in good jobs in PA. If elected, how will you use your elected position to continue this economic growth?
A: As I indicated earlier I am a supporter of the renewable energy sector because it promotes a cleaner environment, while creating new family sustaining employment opportunities. These jobs will provides certifications for workers that are permanent, portable and transferable which will result in increasing per-capita earnings opportunities.
Q: What action, if any, would you support to improve air quality in Western Pennsylvania?
A: I intend to become more familiar with current regulations and determine how regulations are developed, implemented and improved upon.



“I don’t care what responsibilities you have today, there’s no greater responsibility than being in control of your future and your future starts now! We don’t have time, no procrastinating, don’t let the discouragement take you off course, that’s not how my people or my generation will go down...this is the loudest way to make your voice heard!”

-Rihanna, Singer

Carlos Thomas

Party: Dem
Biographical Info:
Education: Le Cordon Bleu Pittsburgh
Facebook: www.facebook.com/votecarlosthomas
Qualifications for office: Community Organizer and Committee Person
campaignwebsite: www.votecarlosthomas.com
Campaign Email: carlos@votecarlosthomas.com
Campaign Web Site: www.votecarlosthomas.com
Campaign Phone: 4124191560



CARLOS THOMAS

Questions:
Q: What are your top three priorities for the office?
A: Clean water and clean air
Countywide food system
Transparency and Engagement
Q: What policies will you pursue to promote social and racial justice for all citizens?
A: I will work to make sure all policies promote social and racial justice. One of the policies I would pursue similar to the city of Pittsburgh’ adopting the “Equitable and Fair Enforcement of Motor Vehicle Laws” to further decrease the racially motivated traffic stops throughout Allegheny County.
Q: The renewable energy industry is providing a significant increase in good jobs in PA. If elected, how will you use your elected position to continue this economic growth?
A: If elected I will work with local governments and the PA Department of Energy to promote pipeline programs from communities to these jobs from one of our county’s greatest assets, our Community College and the other universities in our region.
Q: What action, if any, would you support to improve air quality in Western Pennsylvania?
A: Improving our air quality imperative in our region. While promoting good, green jobs I will fight for our biggest polluters to be penalized heavier for the concern of our residents health.

COUNTY COUNCIL DISTRICT 11

Description: Initiates and adopts ordinances, makes appropriations, adopts annual balanced budget, adopts an administrative code, approves Executive appointments, conducts investigations of County Departments, accepts grants, gifts or donations on behalf of County, may modify or eliminate departments, agencies or functions that no longer serve citizens.
Candidates:
Salary: \$10,939 Stipend. **Term:** 4 years

DEMOCRATIC

Paul Klein

Party: Dem
Biographical Info:
Campaign Web Site: pmklein.com
Campaign Email: pmklein612@gmail.com
Campaign Phone: 412-260-7057
District: 11
campaignwebsite: pmklein.com
Questions:



PAUL KLEIN

Q: What are your top three priorities for the office?
A: As a member of council, I have a long list of priorities. I would begin with my commitment to ensure that that we advance initiatives that prioritize the environmental and public health implications of all of our decisions. That would mean enforcing existing regulations and conducting an ongoing audit of what is and is not being enforced and developing protocols with more stringent requirements. Second, ensuring that our commitment to social justice is real and measurable and is reflected in the services that the county provides. Our decisions as a council, including the legislation we advance
Q: What policies will you pursue to promote social and racial justice for all citizens?
A: If our commitment to social justice is real, it must embody our commitment to racial justice. As a member of the Equity, Diversity and Inclusion Committee at the University of Pittsburgh, I have expanded my consciousness of the damaging implications of not being attentive to the social and racial equity implications of the choices that we make. There are well founded equity assessment tools that can credibly support our efforts. I would advance an education initiative to ensure that all county personnel (including members of council), participate in an EDI education program.
Q: The renewable energy industry is providing a significant increase in good jobs in PA. If elected, how will you use your elected position to continue this economic growth?
A: The economic opportunities of the future have to reflect a meaningful and measurable commitment to consequentially reducing our carbon footprint. The environmental crisis that we have witnessed unfolding in real time is really here. We have to invest in renewable energy technologies, i.e. solar, wind, geothermal, biomass, etc. We have to embrace the idea of a circular economy based on reuse and regeneration. The green job market is growing and workers with the knowledge or skills needed to support environmental sustainability, will increasingly be in demand and those are the enterprises that as a region we ought to be courting and incentivizing.
Q: What action, if any, would you support to improve air quality in Western Pennsylvania?

I recently convened a public hearing as the chair of the Committee on Health and human services to consider just this question and more specifically, the Episodic Rule which is intended to address weather inversion episodes where particulate matter exceeds acceptable standards. At this meeting I recommended that the EPA adopt an even more stringent national ambient air standard than was contemplated their proposed new rule on fine particle pollution. I introduced a sense of council motion

to this effect and it was passed by county council. I will continue to press for action on air quality as we just received a failing score from the National lung Association and the air quality in our county is the worst in the state.

Dennis McDermott

Party: Dem
Biographical Info:
Campaign Web Site: dennisfor11.com
Campaign Email: dennismcdermottpgh@gmail.com
Campaign Phone: 412-368-2092
Facebook: facebook.com/dennisfor11
Education: B.A. Political Science—Point Park University
Qualifications for office: Allegheny County Canvass Director—Food and Water Action
District: 11
Twitter: DPMpgh
campaignwebsite: dennisfor11.com



DENNIS MCDERMOTT

Questions:
Q: What are your top three priorities for the office?
A: 1. Climate Justice: The Climate crisis is the most urgent and pressing challenge facing our world today. Low-income communities and people of color are disproportionately exposed toxic pollution and environmental hazards.
2. Criminal Justice Reform: Our justice system is broken. It prioritizes the over-policing of low-income and minority neighborhoods and incarcerates them at disproportionate rates.
3. Transit Equity: Many communities in the county do not have access to reliable transit cutting them off from medical care, affordable groceries, and economic opportunity.
Q: What policies will you pursue to promote social and racial justice for all citizens?
A: It is my intention for every decision I make as a council member to be made under the lens of social and racial justice. Specifically, I would seek to implement policies that prioritize transparency in policing with adequate enforcement of consequences for failures in transparency. Police presence must be reduced in neighborhoods that are victim to over policing, and the enforcement of laws that disproportionately affect BIPOC individuals and do not harm others must be re-examined. Finally, we must seek to demilitarize our police force and ban the usage of “less-lethal” enforcement devices.
Q: The renewable energy industry is providing a significant increase in good jobs in PA. If elected, how will you use your elected position to continue this economic growth?
A: It is not enough to continually and recklessly pursue economic growth at any cost, and when I make my decisions as a County Councilmember economic growth will not be my first consideration. When it comes to the growth of the renewable energy industry, I think it is more important to consider who will benefit from its growth. Of course everyone in Western PA benefits when we pollute less, but as we transition from fossil fuels, many working-class individuals will lose well-paying union jobs. We must ensure these groups are the first considered as this transition is made and implement programs that pay these workers to train for renewable energy jobs. We must also ensure the renewable jobs being

brought in are good paying jobs and that the companies coming in do not make use of union-busting practices. Finally, communities that have historically been left out of economic projects and have seen the worst effects of pollution should also be considered when growing this industry.

Q: What action, if any, would you support to improve air quality in Western Pennsylvania?

A: First of all, I think is extremely important that we ensure those that can make the most change when it comes to air quality in Western PA cannot be funded by industries that make a profit off of the destruction of our climate. We must strengthen regulations against polluters in the county and ensure the mechanisms of enforcement and oversight are fully funded to ensure compliance. We must end pay-to-pollute policies by increasing the fines to levels major polluters are either unwilling to pay or unable to make a profit if they exceed pollution limits. And money collected through fines on polluters must be fairly allocated to the communities who have been ravaged by the pollution of these corporations for too long.

COUNTY COUNCIL DISTRICT 13

Description: Initiates and adopts ordinances, makes appropriations, adopts annual balanced budget, adopts an administrative code, approves Executive appointments, conducts investigations of County Departments, accepts grants, gifts or donations on behalf of County, may modify or eliminate departments, agencies or functions that no longer serve citizens.
Salary: \$10,939 Stipend. **Term:** 4 years

DEMOCRATIC

David Bonaroti

Party: Dem
Biographical Info:
Education: Penn State University (B.S.) New York University (MA) University of Pittsburgh (MBA) NY Code + Design Academy (Continuing Education)
Campaign Web Site: bonarotiforacc.com
Campaign Email: vote@bonarotiforacc.com
Qualifications for office: 8+ years working in the private sector where I was responsible for building technical solutions/applications, business development, as well as product and operations management. Intern to former State Rep. Frank Dermody. Volunteer for organizations such as Literacy Pittsburgh, America Reads+Counts, Computer Science Summer Institute (Hour of Code initiative), and New York Cares (GED Math Instructor).
campaignwebsite: bonarotiforacc.com



DAVID BONAROTI

REPUBLICAN

No candidate filed

CITY OF PITTSBURGH CONROLLER

Description: The City Controller is the fiscal watchdog for the citizens of the City of Pittsburgh. It is the job of the Controller to protect City tax dollars from waste, fraud and abuse; the Controller does this by auditing all city government related expenditures.
Term: 4 Years

DEMOCRATIC

Mark V. DePasquale

Candidate did not respond.

Rachael Heisler

Party: Dem
Biographical Info:
Campaign Phone: 412-715-5385
Campaign Email: rachael@rachaelforcontroller.com
Campaign Web Site: www.rachaelforcontroller.com
Education: BA, University of Pittsburgh; MPA, Penn State University
Qualifications for office: Current Deputy City Controller, Background in sustainable public finance
Facebook: https://www.facebook.com/rachaelforcontroller
Twitter: twitter.com/rachaelheisler
term: 4 years
campaignwebsite: www.rachaelforcontroller.com



RACHEL HEISLER

Questions:
Q: What are your top three priorities for this office?

A: Making sure the city remains fiscally healthy, we can continue to pay our bills, honor our commitment to workers and retirees
Making sure city funds are spent fairly, equitably, and as intended
Making sure everyone pays their fair share, including our largest employers
Q: Every elected office has obstacles that make it hard to accomplish its mission and responsibilities. What obstacle do you plan to work to remove if elected?
A: We need to make it easier for everyone to access their government.
Q: What policy changes would you recommend to improve police accountability?
A: Making a frequency distribution of offending officers available in the PBP's annual report so the public is aware of officers prone to excessive force
Study the manpower necessary for each police zone and hire accordingly to avoid police officers working excessive overtime, which is when conduct issues are most likely to occur
Issue a formal policy on marijuana decriminalization

Tracy Royston

Party: Dem
Biographical Info:
Campaign Phone: 412-726-7632
Campaign Email: troyston4250@gmail.com
Campaign Web Site: www.royston4controller.com
Education: Masters in Social Work and Public Policy
Qualifications for office: Proven, bold leadership. Governed as the Acting Controller for the county, served as the Deputy Controller and Chief of Staff since 2018, worked in the City under Mayor Tom Murphy's administration,



TRACY ROYSTON

“You’ve got to vote, vote, vote, vote. That’s it; that’s the way we move forward.”

-Michelle Obama, Former First Lady

PPS graduate and parent.
Facebook: facebook.com/royston4controller
Twitter: @TracyRoystonPGH
campaignwebsite: www.royston4controller.com

Questions:
Q: What are your top three priorities for this office?
A: 1. Diversify funding so that the projected budget shortfall does not fall on the shoulders of taxpayers. The two most important streams of funding that must be pursued are acquiring Payments in Lieu of Taxes from our largest nonprofits and pushing forth legislation to make our land bank viable to return blighted properties to our tax rolls. 2. Greater oversight and partnership with Pittsburgh Public Schools. There has been little to no presence at PPS. We must have healthy schools to have healthy communities. 3. Engage every community to ensure that every need is met and prioritized.
Q: Every elected office has obstacles that make it hard to accomplish its mission and responsibilities. What obstacle do you plan to work to remove if elected?
A: I believe that the Controller's office is the office of possibility. The Controller should be at the table for critical budgetary conversations and act as a convener to bring different levels of government together. The Controller can move discussions into action as the conduit for research and data. We need to take advantage of having a Democratic majority in the State House. Several pieces of legislation can and must move forward to have the most efficient government possible. (local oversight of public authorities & schools, land bank deregulation, antitrust & PILOT enforcement)
Q: What policy changes would you recommend to improve police accountability?
A: There is an urgent need to reform public safety and police accountability. The model of policing in the US is by and large a militaristic approach that never has served all communities and has been failing to meet our general needs and terrorizing our Black communities. We have tremendous opportunity to rethink how we approach public safety with increasing majority of elected leaders who think and govern differently. We must especially focus on our Black residents who are deprived of the most basic human rights and protections. I witnessed these disparities firsthand as a member of the Jail Oversight Board seeing the statistics at the ACJ, where roughly 65% of those incarcerated are Black, though black residents make up only 14% of the city's population. As the controller, I would audit the Citizens Police Review Board and the internal reporting structures of the police. I would also make funding dependent on training that focuses on bias awareness and sensitivity.

PITTSBURGH CITY COUNCIL DISTRICT 1

(Vote For One)

Description: Council consists of nine members elected by district by the city of Pittsburgh voters. The legislative power is vested in the council. Council members in odd-numbered districts are elected 2 years after the even-numbered district members are elected.

Salary: 76,544. **Term:** 4 years

DEMOCRATIC

Steven Oberst

Candidate did not respond

Bobby Wilson

Candidate did not respond

PITTSBURGH CITY COUNCIL DISTRICT 3

Description: Council consists of nine members elected by district by the city of Pittsburgh voters. The legislative power is vested in the council. Council members in odd-numbered districts are elected 2 years after the even-numbered district members are elected.

Salary: 76,544. **Term:** 4 years

DEMOCRATIC

Bob Charland

Party: Dem
Biographical Info:
Campaign Web Site: charlandforpgh.com
Campaign Phone: 267-670-1768
Campaign Email: info@charlandforpgh.com
Education: Bachelor of Science in Biology from the University of Pittsburgh
Qualifications for office: Since 2018, I have worked in Councilman Bruce Kraus's office, where I have managed constituent services, helped develop



BOB CHARLAND

policy, and have attended a wide variety of community meetings, building relationships across the district
Facebook: facebook.com/charlandforpgh
Twitter: twitter.com/charlandbob
campaignwebsite: charlandforpgh.com

Questions:
Q: What are your top three priorities for this office?
A: If elected, I will work to make sure that East Carson Street has a dedicated business district manager who is tasked with creating a safe, vibrant and diverse business district, like most of other business districts in the city already have. I will make sure that Oakland residents have a voice in the redevelopment of our second downtown, against powerful stakeholders like UPMC and the University of Pittsburgh, while prioritizing housing affordability and homeownership in the neighborhood. In the Hilltop, I will continue to work on empowering neighborhood groups to fight slumlords.
Q: What policies will you pursue to promote social and racial justice for all citizens?
A: BIPOC voices do not need a translator, they need a microphone and it will be my job to make sure that voices from these communities are heard in Council. Property maintenance issues and vacant properties disproportionately affect our neighborhoods of color and are well within the council's responsibility to address. Blight does not plague all neighborhoods in the City equally. These issues deter investment, are attractive nuisances for crime, and ultimately lead to families being forced to leave our neighborhoods. I will work on speeding up processes that get vacant property into reuse.
Q: What policy changes would you recommend to improve police accountability?
A: First and foremost, I never want it to be my voice alone on this issue; I will always prioritize conversations with those most impacted as we navigate a needed reimagining of public safety and increased police accountability. I believe as council, we need to question if the police are always the right tool for the job and acknowledge that we are asking too much of them. We cannot have police responding to situations, such as mental health crises, where they are not trained and create dangerous situations for everyone involved. We need to ensure that police have all of the information they need to respond to calls, that they are the right response to those calls, and that if something goes wrong, we deserve to know every detail of what happened.

PITTSBURGH CITY COUNCIL DISTRICT 5

Description: Council consists of nine members elected by district by the city of Pittsburgh voters. The legislative power is vested in the council. Council members in odd-numbered districts are elected 2 years after the even-numbered district members are elected.

Salary: 76,544. **Term:** 4 years

“Nobody will ever deprive the American people of the right to vote except the American people themselves and the only way they could do this is by not voting.”

- Franklin D. Roosevelt, Former U.S. President

DEMOCRATIC

Laura Brillman

Party: Dem
Biographical Info:
Campaign Phone: 412-339-0094

campaignwebsite: litabrillman.com

Campaign Email: hello@litabrillman.com

Campaign Web Site: litabrillman.com

Education: Master's in Public Administration from the University of Pittsburgh, B.A. in Women's Studies and History from the University of Michigan—Ann Arbor

Qualifications for office: MPA with research focus on Pittsburgh's racial equity concerns; experience consulting at City Council and providing constituent services for the office of Councilperson Erika Strassburger; experience working on local policy such as sidewalk accessibility, the plastic bag ban, and improving the participatory budgeting process; Coro Fellowship in Public Affairs where I worked across sectors in Pittsburgh and interviewed over 100 Pittsburgh professionals; non-profit experience including in the voting rights and pro-choice spaces; only candidate actually from Pittsburgh.

Facebook: facebook.com/litaforpgh

Twitter: @litaforpgh



LAURA BRILLMAN

Questions:

Q: What are your top three priorities for this office?

A: 1. Equity—including programs that promote racial, gender, LGBTQ+, and religious freedom, anti-discrimination, and applying an intersectional lens to all policy and programmatic decisions

2. Fair housing—including promoting homeownership, limiting absentee land-lording and excessive airbnb, building up an affordable housing stock, and limiting single-family zoning/promoting upzoning and sponsoring repairs to existing housing stock

3. Environment & Labor—supporting a just transition to clean union jobs and promoting union density by limiting union-busting practices

Q: What policies will you pursue to promote social and racial justice for all citizens?

A: —Divert funding from police into social services; pilot policing alternatives programs that prioritize connecting offenders with services and restorative rather than punitive justice; implementing this same practice in schools by limiting cops in schools and raising the standard for extreme disciplinary action, as well as providing free breakfast and lunch to PPS students

—Increasing affordable housing stock and reforming the Section 8 process so that wait lists aren't years long

—Improving conditions at the ACJ & improving re-entry services and restoration of civil rights including voting

Q: What policy changes would you recommend to improve police accountability?

A: —Establish a new police oversight commission that has the power to perform independent investigations and determine punishments, rather than just recommending cases for the police chief to determine guilt and/or consequences which lead to limited accountability. Ensure that this commission includes an appointment process that is not solely on the mayor, since one pro-police mayor can limit

the diversity and authority of the commission —Allow for more frequent and public re-negotiations of FOP contracts that include a public input period, and limit the relationship between the Labor Council in Allegheny County and the FOP, as police unions function differently from every other labor union and should not be consider a part of the labor movement.

Barb Warwick

Party: Dem

Biographical Info:

campaignwebsite: barbforpgh.com

Campaign Email: barbforpgh@gmail.com

Campaign Web Site: barbforpgh.com

Education: BA from Barnard College, MA from the University of Heidelberg (Germany)

Qualifications for office: I'm a working mom living in Four Mile Run since 2014. I got my start in Pittsburgh



"Our political leaders will know our priorities only if we tell them, again and again, and if those priorities begin to show up in the polls."
- Peggy Noonan, writer

politics as a volunteer for Bernie Sanders, Hillary Clinton, Ed Gainey, Summer Lee, and the APA. As a community organizer in Greenfield and Hazelwood, I worked to stop the Mon Oakland Connector shuttle road through Schenley Park and advocated for new playgrounds, better bus service, more after-school opportunities, and greater food access. I'm also the Vice Chair of Pittsburghers for Public Transit.

Facebook: Barb4PGH

Twitter: Barb4PGH

Questions:

Q: What are your top three priorities for this office?

A: There are so many issues that need to be addressed, from managing our unhoused population, to keeping our kids safe when they aren't in school, to creating affordable housing, to expanding food access. We need to be addressing them all, both at the Council table & on the ground with our constituents. My team & I are focused on taking a holistic approach to the level of multi-tasking that is required to do this job. That means working closely with city departments, the mayor's office, the county, & other authorities to help them understand what needs to be prioritized in each neighborhood.

Q: What policies will you pursue to promote social and racial justice for all citizens?

A: As a member of city council, promoting social and racial justice means making sure parts of my district that have historically been left behind have a seat at the table. I have worked closely with my neighbors in Greater Hazelwood to improve transit and food access, & to increase funding for rec programs. Going forward, I am committed to growing city leaders from Greater Hazelwood by connecting with young people and helping them engage with city government. It's high time that Hazelwood had an elected representative in city government, and I am committed to helping make that happen

Q: What policy changes would you recommend to improve police accountability?

A: We need to take a holistic approach to public safety —one that focuses the work of the police on dealing with the types of violent crime they are trained to handle. Having social workers respond to nonviolent mental health calls is a step in the right direction. Something else we could do is enact mandatory self-service telephone reporting for non-urgent issues so that officers can focus on the critical calls. This would result in fewer overtime hours for officers and fewer contacts between officers and the public, helping to minimize violent interactions between police and citizens.

PITTSBURGH CITY COUNCIL DISTRICT 7

Description: Council consists of nine members elected by district by the city of Pittsburgh voters. The legislative power is vested in the council. Council members in odd-numbered districts are elected 2 years after the even-numbered district members are elected.

Salary: 76,544.

Term: 4 years



BARB WARWICK

DEMOCRATIC

Jordan Botta

Party: Dem
Biographical Info:
Twitter: twitter.com/votebotta
Campaign Phone: 412-206-9294
Education: Central Catholic High School, University of Pittsburgh (B.S.), American Public University (M.S.)
Campaign Email: votebotta@gmail.com
Campaign Web Site: votebotta.com
Facebook: facebook.com/votebotta



BARB WARWICK

Qualifications for office: 10 years of civic service in leadership positions of multiple non-profit and community organizations in the City of Pittsburgh
campaignwebsite: votebotta.com

Questions:

Q: What are your top three priorities for this office?
A: My top three priorities for office are ensuring an affordable cost of living in the city, investing in clean and green transportation, energy, and public infrastructure, and strong constituent services to ensure that we prioritize not only the big issues, but the small issues that affect daily life. Please visit our website votebotta.com to find more detailed information on our plans to address these issues.
Q: What policies will you pursue to promote social and racial justice for all citizens?
A: Our office will establish the Office of Black Affairs, the Office of LGBTQ+ Affairs, and the Office of Immigration, to give proper representation to our most vulnerable residents. We have a plan in place to completely reverse the 2019 Gender Equity Report to make Pittsburgh one of the most equitable places in the country for Black and Brown residents by investing in programs which incentivize Black and Brown girls and boys in STEM and the Arts and Humanities, and work with relevant stakeholders in the city to ensure that our next generation minority professionals stay in Pittsburgh.
Q: What policy changes would you recommend to improve police accountability?
A: Hybrid policing and co-response efforts are a wonderful start, but we need more direct accountability from our law enforcement. As an accessible and accountable member of council, I plan to hold quarterly meetings in each of our

neighborhoods to ensure that the voices of our residents are heard and we hold police accountable for any issues that have occurred, big or small. I was directly involved with residents following the tragic and senseless shooting in Bloomfield in late March, while also working alongside officers involved in the response. This direct involvement is pivotal, and I believe that our elected officials can and should serve as a liaison between police and residents. Accountability starts on a local level, and I plan to do everything I can to assure that our police are accountable to the residents they are tasked with protecting and serving.

Deb Gross

No response

PITTSBURGH CITY COUNCIL DISTRICT 9

Description:

Council consists of nine members elected by district by the city of Pittsburgh voters. The legislative power is vested in the council. Council members in odd-numbered districts are elected 2 years after the even-numbered district members are elected.

Salary: 76,544.

Term: 4 years

DEMOCRATIC

Khadijah Harris

Party: Dem
Biographical Info:
Campaign Phone: 4122772598
Education: Bachelor of Science in Biology, Cheyney University / Child development Associates, University of Pittsburgh / Infant through adolescent development certification, CCAC
Campaign Email: friendsofkhadijah@gmail.com
Campaign Web Site: www.votekhadijah.com
Twitter: @Votekhadijah



KHADIJAH HARRIS

campaignwebsite: www.votekhadijah.com
Facebook: khadijah for City Council
Qualifications for office: Personal experience living & growing up in district 9 / 25 years of experience in non-profit management / 18 years of experience as an independent broker/business owner

Questions:

Q: What are your top three priorities for this office?
A: Home Ownership/Quality affordable housing. Safe Space for residents & youth
Access to quality rehabilitation facilities for residents
Q: What policies will you pursue to promote social and racial justice for all citizens?
A: I will promote any policies that ensures that all people no matter of their race or beliefs will have access to quality education, quality and affordable housing, and quality healthcare.
Q: What policy changes would you recommend to improve police accountability?
A: I would recommend that all police officers and administrators be trained in cultural sensitivity and critical thinking on the ongoing bases. This will help with officers understanding the situation they are in and will assist the officers with thinking before they do something they will regret like killing someone or getting killed.

Khari Mosley

Party: Dem
Biographical Info:
Campaign Phone: 412-946-8651
Education: Indiana University of PA, Political Science Major
Campaign Email: info@mosleyforpgh.com
Campaign Web Site: www.mosleyforpgh.com
Twitter: www.twitter.com/mosleyforpgh
campaignwebsite: www.mosleyforpgh.com
Facebook: www.facebook.com/mosleyforpgh
Qualifications for office: 2004-2009: Democratic Committee Chairman 22nd Ward; 2005-2007: Pennsylvania State Director League of Young Voters/League of Young Voters Education Fund; Campaigns Director 2007-2008 Pittsburgh



KHARI MOSLEY

“Voting is not only our right—it is our power.”
“When we vote, we take back our power to choose, to speak up, and to stand with those who support us and each other.”
- Loung Ung, activist



United; 2008-2009: National Political & Policy Director League of Young Voters/League of Young Voters Education Fund; 2009-2012: Director of Green Economy Initiatives GTECH Strategies; 2012-2019: Pennsylvania State Director BlueGreen Alliance; 2019-Present: Director 1Hood Power & Political Director of 1Hood Media

Questions:

Q: What are your top three priorities for this office?

A: My top three priorities as a council member are: (1) Making our streets safer through a multilayered and comprehensive approach that addresses the root causes of crime, such as poverty, mental illness, food insecurity, housing instability, and other traumatic experiences. (2) Addressing our affordable housing challenges by empowering neighborhoods in the planning process and approaching community building comprehensively with a lens toward equity. (3) Prioritizing the modernization of our roads, bridges, and other critical elements of our city's infrastructure.

Q: What policies will you pursue to promote social and racial justice for all citizens?

A: To promote social and racial justice for all, I will be focusing on comprehensive community health, people-centered public safety, resilient infrastructure, equitable neighborhood development, affordable housing, fair wages, climate protection, food security, equity, inclusion, and other critical public policy goals.

Q: What policy changes would you recommend to improve police accountability?

A: We must hold officers who commit misconduct accountable. These specific actions I would take as a councilman to achieve this goal are: Require transparency and publicly available information concerning use-of-force policies. Require accurate records of police misconduct through internal affairs case management. Require body camera footage and other evidence of officer behavior to be shared promptly. Call for special investigators to investigate instances where police have seriously injured or killed civilians. Regularly survey the community to gauge their experiences and perceptions of the police. Implement outreach and recruitment strategies to increase the proportion of police officers who are women and people of color. Strengthening the civilian police review board to have more oversight powers on police misconduct.

PITTSBURGH SCHOOL DIRECTOR DISTRICT 2

Description: School Directors are elected on behalf of the community to oversee the education of students in their jurisdiction. They serve as agents of the state legislature. They are responsible for curriculum and instruction management, all finances including development of annual budgets and levying of taxes and issuance of debt obligations when necessary; personnel; legal matters; management of facilities; and transportation of students as appropriate. Schools may include pre-K and career and technical schools. The school board consists of nine members who serve four-year terms of office without pay. The school district of the City of Pittsburgh includes Mount Oliver. In 2019, directors for even numbered districts will be elected.

Ron Sofo

Party: Dem,Rep

Biographical Info:

Campaign Phone: 412-260-7559

Campaign Email: sofoforppsdistrict2@gmail.com

Campaign Web Site: www.RonSofo.com

Education: Ph.D in Counselor Education/Supervision of Curriculum & Instruction, University of Pittsburgh 1981; MS ED College Student Development (Career & Social/Emotional Counseling), Alfred University 1978; BA University of Rochester, 1976, Psychology minor in history and instrumental music.

Qualifications for office: Retired educators with 32 years of experience that include: 19 years as a public school superintendent/assistant superintendent with the Freedom Area SD in Beaver County PA, 1993-2012; 6 years as CEO/Principal of City Charter High School in Pittsburgh PA, 2012-2018; 4 years as Special Assistant to PPS Superintendent, Dr. Richard Wallace, 1988-92; Greeway Middle School Assistant Principal, 1992-93; Prevention Counselor with the McKeesport Area SD, 1986-1988. I have a positive record of results for youth within every



RON SOFO

organization I have served.

Facebook: Ron Sofo, Democrat for PPS School Board District #2

campaignwebsite: www.Ron Sofo.com

Questions:

Q: What policies or programs do you advocate that would foster a school atmosphere where everyone feels physically, emotionally, and intellectually safe?

A: Safety begins and ends with developing & sustaining caring relationships between & among students, their families, teachers, school administrators & support staff. Keeping the same teachers with students for 2-4 years (looping) is a necessary pillar to create safe, caring learning and work environments. Reliable & results-proven community partners that assist students, family & school staff with physical & mental health, along with basic support services for families (affordable housing, living wage work) integrate into a seamless community school environment during & after the school day are essential for safety for all.

Q: In what order would you, as a potential school board member, place the following priorities for your district: athletics, core academic programming, extracurricular opportunities (music, art, clubs, etc.), facilities maintenance/expansion, and technology development? Please explain.

A: Priorities in descending order: Core academics including the Arts/Music, technology development, facilities M&E, extracurriculars, athletics. Over 60% of Black third graders are not reading at grade level. A "D" grade does nothing to prepare students for success. Academic success must be supported by appropriate use of educational technology as a learning tool & to acquire industry standard skills for the global workplace. PPS schools are, on average, 84 years old and must be assessed for their ability to support core academic priorities. All students need equitable access to extracurriculars & athletics to prepare them for healthy living.

Q: How would you address anticipated shortfalls in school funding over the next few years? Please be specific.

A: • Lead for growth & expand quality learning opportunities for all students, especially students who have been historically marginalized by the traditional public education model.

• Transparently modernize & appropriately size the number of buildings to educate ~19,000 students instead of paying to maintain 38,000 seats.

• Consistently competitively bid for services

Never doubt that a small group of thoughtful, committed citizens can change the world: indeed, it's the only thing that ever has.

-Margaret Mead



tracts like student transportation & employee healthcare.

- Demand more state sharing of rising retirement costs.
- Improve PPS’ ability to hold current families & students in the district as well as attract new families.

Devon Taliaferro

Party: Rep, Dem
Biographical Info:
Campaign Phone: 4124272211
Campaign Email: taliaferrodevon@gmail.com
Campaign Web Site: www.devontaliaferro.com
Education: HS/ College Qualifications for office: Currently holding Pittsburgh School Director, District 2 seat since December 2019 (1st 4 year term), Completed professional development training on School Board Governance with Pennsylvania School Board Association (PSBA) in 2019 and Council of the Great City Schools (CGCS) Student Outcomes Focused Governance Board Officer Cohort from March 2022-October 2022, Worked for youth serving nonprofit organizations working with PPS students, families, community members, and other stakeholders (2015-present), Passion and drive to center the needs of students and their outcomes
Facebook: https://www.facebook.com/AlliesforDevon/
campaignwebsite: www.devontaliaferro.com



DEVON TALIAFERRO

Questions:

Q: What policies or programs do you advocate that would foster a school atmosphere where everyone feels physically, emotionally, and intellectually safe?
A: As I consider the challenges our district still faces, I am constantly considering equitable and inclusive solutions for how to improve academic outcomes for PPS students. It’s been proven that

students who feel they belong and are safe, honored, and respected have better attendance and engagement in school. We must have practices in place that encourage and support our youth instead of pushing them out using exclusionary discipline. To improve student outcomes, I can continue to advocate for small class sizes, adequate staff, and full-time Service Coordinators and school-based services through the expansion of our Community Schools model.

Q: In what order would you, as a potential school board member, place the following priorities for your district: athletics, core academic programming, extracurricular opportunities (music, art, clubs, etc.), facilities maintenance/expansion, and technology development? Please explain.
A: In order of priority: Core academic programming, Facilities maintenance/expansion, Technology development, Extracurricular opportunities (music, art, clubs, etc.), and Athletics. While I view all of these topics as valuable priorities for the district, the academic success of PPS students is our number 1 priority, as the district is charged to engage students in rigorous teaching and learning. In addition to academics, our district needs well maintained, environmentally safe buildings to support the needs of students and staff. Students should have a well-rounded education including arts, music, athletics, access to technology, and more.

Q: How would you address anticipated shortfalls in school funding over the next few years? Please be specific.
A: With staff expenses being the majority of the budget, I am committed to investing in an equitable budget that will pay fair wages, keep small class sizes, and allocate funds so each school can have a FT nurse, art teacher, music teacher, librarian, and other essential staff. Public school funding from the state is not enough to keep up with the rising costs; we shouldn’t rely on property taxes for education. Charter School Law reforms are needed as 20% of our budget is charter school expenses. While serving on the board, I have worked with our state legislators on solutions to address funding to secure the resources students need to thrive.

PITTSBURGH SCHOOL DIRECTOR DISTRICT 4

Description: School Directors are elected on behalf of the community to oversee the education of students in their jurisdiction. They serve as agents of the state legislature. They are responsible for curriculum and instruction management, all finances including development of annual budgets and levying of taxes and issuance of debt obligations when necessary; personnel; legal matters; management of facilities; and transportation of students as appropriate. Schools may include pre-K and career and technical schools. The school board consists of nine members who serve four-year terms of office without pay. The school district of the city of Pittsburgh includes Mount Oliver. In 2019, directors for even numbered districts will be elected.

Yael Silk

Party: Rep, Dem
Biographical Info:
Campaign Web Site: silk4students.com
Campaign Email: info@silk4students.com
Campaign Phone: 936-827-4465
Qualifications for office: I am driven to make PPS work better for our students as a mother, an educator, and a community builder. I sent my kids to PPS schools, and transferred a child out of a PPS school. In my leadership role at Arts Ed Collaborative, I have the perspective that comes from working with diverse school districts across Southwestern Pennsylvania. As a collaborative professional and an organizer with Bend the Arc: Jewish Action Pittsburgh, I know what it takes to connect people, ideas, and resources for positive change.
Education: Master’s in Arts Education
Twitter: @Silk4Students
Facebook: facebook.com/silk4students
campaignwebsite: silk4students.com



Yael Silk

Please go out and vote this November. Too many people have died and sacrificed so much for us to have our voice, we have to use it. Get information. Use our voices to do something great for our children.”
-Beyoncé, American Singer



Questions:
Q: What policies or programs do you advocate that would foster a school atmosphere where everyone feels physically, emotionally, and intellectually safe?
A: I will consider school safety proposals based on research rather than fear. Students feel safer when they are seen, appreciated, and celebrated by their peers and school adults. Important steps to achieve this include increasing available support services (e.g., school counselors), investing in school-level community building activities, and reducing police presence inside schools. I will also encourage investment in culturally responsive teaching practices that uplift the diverse identities of our school district community.
Q: In what order would you, as a potential school board member, place the following priorities for your district: athletics, core academic programming, extracurricular opportunities (music, art, clubs, etc.), facilities maintenance/expansion, and technology development? Please explain.
A: I think that the school board's top priority needs to be more fundamental. At the height of the pandemic, our district leaders fell short of providing reliable and accessible learning opportunities to our students. Many families chose to leave. It is essential for the school board to repair trust with the families who remain. This will take the superintendent and the school board communicating openly about what went wrong, how we plan to operate differently moving forward, and what progress will look like along the way.
Q: How would you address anticipated shortfalls in school funding over the next few years? Please be specific.
A: There is insufficient transparency and clarity around the PPS budget. My first funding priority is conducting a full audit to better understand resource allocation and determine more precisely where more funds are needed. There is also an opportunity for the school board to work with the superintendent to make changes to the school-level budgeting process with two goals in mind. The first is to ensure that students and educators get the resources they need. The second is to make it easier for the community to understand how public dollars are being spent.

PITTSBURGH SCHOOL DIRECTOR DISTRICT 6

Description: School Directors are elected on behalf of the community to oversee the education of students in their jurisdiction. They serve as agents of the state legislature. They are responsible for curriculum and instruction management, all finances including development of annual budgets and levying of taxes and issuance of debt obligations when necessary; personnel; legal matters; management of facilities; and transportation of students as appropriate. Schools may include pre-K and career and technical schools. The school board consists of nine members who serve four-year terms of office without pay. The school district of the city of Pittsburgh includes Mount Oliver. In 2019, directors for even numbered districts will be elected.

Emma Yourd

Party: Dem
Biographical Info:
Education: Masters of Public Administration, University of Pittsburgh; BA, Economics, Smith College
Campaign Email: friendsofemmayourd@gmail.com
Facebook: www.facebook.com/yourd4board
Qualifications for office: I have served on nonprofit boards in various roles from communications to finance and have an understanding of the responsibility that comes with serving on a board. In my previous role as Grants Manager at a local foundation, I interacted with many nonprofits that provide out-of-school programming for our youth and as a result, have seen first hand both how our schools are serving our children and where there is room for improvement



EMMA YOURD

Questions:
Q: What policies or programs do you advocate that would foster a school atmosphere where everyone feels physically, emotionally, and intellectually safe?

A: One of the best things we can do to make our schools feel safer is invest in additional support staff and resources for our students and teachers. Additional support staff in schools would help to address emotional and mental health issues in students before they become a crisis. A number of our schools have opted in to a community schools model, which makes school buildings a community resources for students and parents alike. Expanding that model across the district to our most resilient neighborhoods would also help foster a safer learning environment.
Q: In what order would you, as a potential school board member, place the following priorities for your district: athletics, core academic programming, extracurricular opportunities (music, art, clubs, etc.), facilities maintenance/expansion, and technology development? Please explain.
A: Core academic programming is my priority - currently, there is broad disparity in the quality of education that students receive within the district. That gap must be closed—no student should receive a lower quality education just because of zip code. Extracurricular opportunities play an important role in social development and in keeping our students safe, so I would place that next. PPS is facing critical decisions on school district infrastructure in the next decade, so investing in facilities maintenance and technology development is the next highest priority to ensure we are planning for the future of the school district.
Q: How would you address anticipated shortfalls in school funding over the next few years? Please be specific.
A: Before I make any decisions about the budget allocations, I want to spend time carefully examining the school budget over the last few years to understand how resources are currently being allocated. I would also call for an audit of school district finances. Finally, it is critical that the school board understand how funds sent to charter schools are being spent and allocated so that any funds not spent on student resources or teaching can be re-allocated. I will work with the other school board directors and administration to determine together how to address the shortfalls without cutting services to students and parents.

“The most important office, and the one which all of us can and should fill, is that of private citizen.”
-Louis Brandeis, American Lawyer and Associate Justice of the Supreme Court



PITTSBURGH SCHOOL DIRECTOR DISTRICT 8

Description: School Directors are elected on behalf of the community to oversee the education of students in their jurisdiction. They serve as agents of the state legislature. They are responsible for curriculum and instruction management, all finances including development of annual budgets and levying of taxes and issuance of debt obligations when necessary; personnel; legal matters; management of facilities; and transportation of students as appropriate. Schools may include pre-K and career and technical schools. The school board consists of nine members who serve four-year terms of office without pay. The school district of the city of Pittsburgh includes Mount Oliver. In 2019, directors for even numbered districts will be elected.

Dwayne Barker

Party: Dem
Biographical Info:
campaign website:
www.dbarker4pps.com
Facebook: Facebook.
com/Dwayne Barker for
PPS School Board
Campaign Phone: 412-
728-0844
Campaign Email:
dbarker4pps@gmail.com
Campaign Web Site:
dbarker4pps.com
Twitter: Twitter.com/@
Dbarker4PPS



DWAYNE BARKER

Education: International Academy of Design & Technology with Associates Degree In Specialized Business Computer Information Management
Qualifications for office: Parent Representative on Policy Council for Spring Garden Early Childhood Center, Chairman of the Male/Fatherhood Involvement Committee, Parent and Community Representative for Policy Council, Chairman of PTA/PSCC at Pgh Northview ALA, Take a Father To School Day Committee member, Vice Chairman of PTO/PSCC at Pittsburgh King, Founder and Parent Communi-

ty Volunteer Coordinator of the Parent Community Volunteer Network at Pittsburgh King Prek—8th, Strengthening Black Families—National Advisory Committee member for the POISE Foundation, Board of Director of Perry Hilltop Citizens Council

Questions:

Q: What policies or programs do you advocate that would foster a school atmosphere where everyone feels physically, emotionally, and intellectually safe?

A: Watching the youth now in days growing up in an education system with school violence and bullying, now having another way of doing it online, has led to loss of life with a higher suicide rate, lifetime disorders with a higher level of depression, lack of education with a higher level of dropouts, lower incomes.

We as the stakeholders need to not only put more safeguards around the children we serve in our schools, but also have our finger on the pulse of what kind of supports the parents and staff need in our schools as well. Collectively we all play important roles in securing positive outcomes for our Future Leaders of tomorrow!

Q: In what order would you, as a potential school board member, place the following priorities for your district: athletics, core academic programming, extracurricular opportunities (music, art, clubs, etc.), facilities maintenance/expansion, and technology development? Please explain.

A: core academic programming would be first on the list. We all know that academics are the priority. 2nd for me would be technology development. I also feel as if technology is the way of the future and we need to get & keep our students on a tech path. 3rd would be extracurricular opportunities. Many of our students have talents that are elevated or gracefully brought out of them with the help/support of the instructors. 4th would have to be athletics and finally. Some of our most gifted athletes need this as a part of their lives so that they can blow off some steam or maybe even feel like the hero in their own story. 5th would be facilities

Q: How would you address anticipated shortfalls in school funding over the next few years? Please be specific.

A: I believe PPS schools are not funded sufficiently.

Especially the heavily black and brown populated areas around the city. We also know that even if the schools are getting a nice bit of money, the principles aren't properly educating the staff and the parents on the allocations of the money. I am currently one of only several Pittsburgh parents serving on the PA Title I State Parent Advisory Council (SPAC) where I shares ideas with the Division of Federal Programs about effective strategies to involve Title I parents to increase student achievement primarily when it comes to the funding.

The vote is precious. It is the most powerful non-violent tool we have in a democratic society, and we must use it.

- John Lewis



Making your voice heard is

UP TO YOU



VOTE 2023

www.pavoterservices.pa.gov