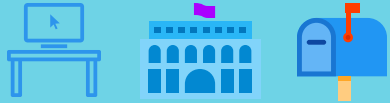


One Voice—One Vote—Be Heard!



Register

WHO Can Vote?

- US citizen, 30 days
- 18 on or by NOV 7
- PA resident for 30 days before an election

Register

HOW Do I Register?

- ONLINE
- In-person
- By mail- Already registered?

- See more, at

vote.pa.gov



Register

WHEN: NOW! Or
Before Deadlines--
OCT 23 to register
OCT 31 to apply for
Mail-in Ballot

ELECTION DAY
NOV 7, 2023

Election Day In-person

WHERE Do I Vote?

- Voter Registration ID Card shows Polling Place- Check Registration at vote.pa.gov
- Need approved ID your first time in a Polling Place



Election Day

In-person

HOW Do I Vote?

- Travel by car, bus, walk to polls
- "Rolls to the Polls" See [B-PEP](#)

OR VOTE by
MAIL-IN Ballot
(OVER)

Election Day In-person

Polling Place PROBLEMS?



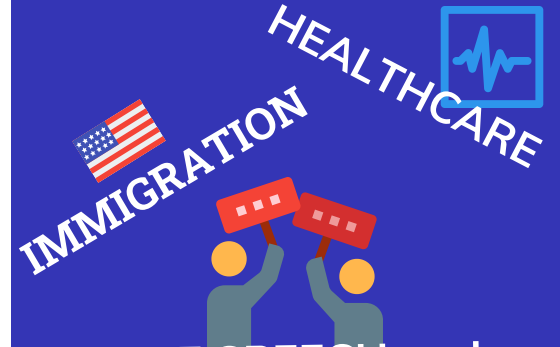
- See [ELECTION PROTECTION COALITION](#)
- 866-687-8683
- 888-VE-Y-VOTA

Polls: 7am-8pm

WHY VOTE



GUN SAFETY



FREE SPEECH and
PEACEFUL PROTEST

JOBS AND HOUSING

POLICING

LGBTQ+

CLIMATE

VOTE TO
BE HEARD!